

# AMUSEMENT TODAY <sup>©</sup> <sub>TM</sub>

Your Amusement Industry NEWS Leader!

Vol. 17 • Issue 7

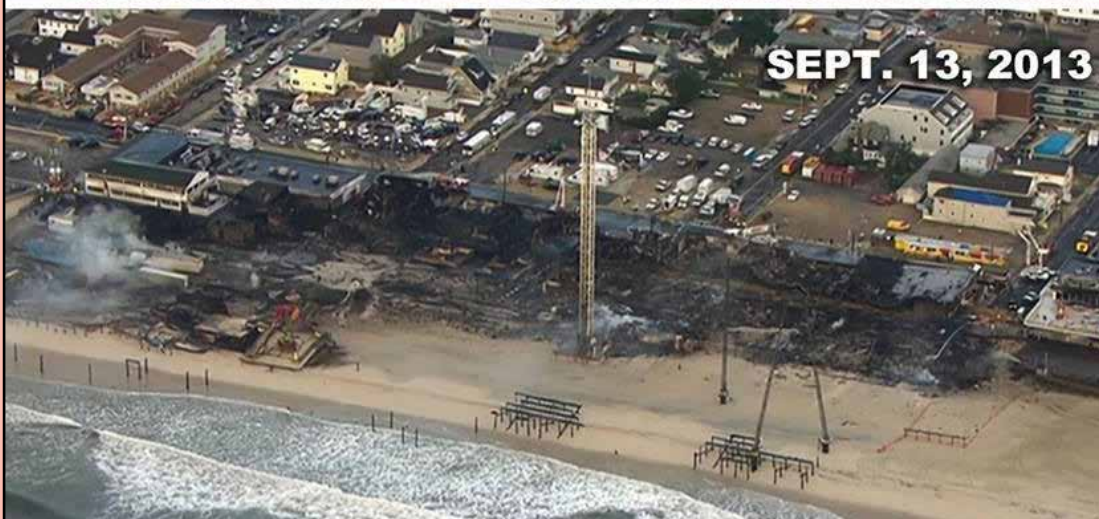
OCTOBER 2013

## INSIDE

Massive fire takes out what Sandy could not;  
FunTown Pier goes up in flames...Page 34



OCT. 31, 2012



SEPT. 13, 2013

FunTown Pier, Seaside Park, New Jersey seen after Superstorm Sandy and after the September 12, 2013 fire. COURTESY NJAA

- ▶ Waterparks coverage...Pages 21-30
- ▶ Continuing Coverage/Superstorm Sandy...Pages 33-35
- ▶ AIMS News & Notes...Page 38
- ▶ AT talks with Great Wolf Lodge CEO Kim Schaefer...Pages 39-40

## WWA officials expecting good turnout for annual show while planning for Asian show in 2014

Convention, show attendees want lots of sunshine

STORY: Pam Sherborne  
psherborne@amusementtoday.com

WEST PALM BEACH, Fla. — At the first of September, World Waterpark Association executives were pleased with registration numbers for this year's WWA Annual Symposium & Trade Show, which begins Saturday, Sept. 28, with the three-day Ellis Lifeguard Instructor Program and runs through Thursday, Oct. 3.

The Trade Show will run two days, Tuesday, Oct. 1 (12:30-6 p.m.) and Wednesday, Oct. 2 (11 a.m. - 3:30 p.m.). During the show, attendees will gain access to 100,000 square-feet of some of the newest and most innovative waterpark-related goods and services. A buffet lunch will be served both days on the floor.

"We are pleased with where we are with registration this year, as our numbers are in line with where we were last year in Las Vegas," said Rick Root, WWA President.

Root said the association was excited to be back in Florida both because "Florida is such a rich market of water leisure facilities and because the Florida coast offers so many unique entertainment options."

"For example, this year we are offering a dive trip option and hosting our most popular social event at The Rapids Water Park, one of the area's largest and longest running parks," Root said.

Scuba lessons have also been added to the schedule for Thursday, Oct. 3. The dive trip option is set for Friday, Oct. 4.

It seems many attendees to the 2013 event will just be thankful to see the sun.



"We've heard from many U.S. operators in the Midwest, along the East Coast and in the South, as well as operators in parts of Europe, that weather presented a significant challenge in 2013," said Aleatha Ezra, WWA director of park membership development. "Some facilities lost operating days in the double digits in June and parts of July thanks to unseasonably cool and wet conditions."

Waterpark management reported that even on days that weather actually turned out to be better than expected, the negative weather predictions kept would-be patrons inside.

Ezra related a comment from Louis Cirigliano, Casino Pier & Breakwater Beach, Seaside Heights, N.J.: "No one could possibly have had a worse season than us. Dealing with the recovery and lasting effects from Hurricane Sandy, and one of the wettest June's on record, we've been hard hit."

"That said, the outlook for many remains positive as they ended their season stronger than they began," Ezra said.

Waterpark business continues to grow internationally and it seems that Asian attendance totals are now surpassing those of North America, especially in China and Southeast Asia, WWA executives reported.

Root said: "As part of our efforts to bring regional  
▶ See WWA, page 4

NEWSPAPER

POSTMASTER: Dated material.  
PLEASE RUSH!  
Mailed Monday, Sept. 30, 2013

PRST STD  
US POSTAGE  
PAID  
FT. WORTH TX  
PERMIT # 2069

SUBSCRIBE TO  
AMUSEMENT TODAY  
(817) 460-7220

amusementtoday.com

www.GOLDENTICKETAWARDS.com



# NEWTALK

OPINIONS

CARTOON

LETTERS

AT CONTACTS

**EDITORIAL:** Gary Slade, [gslade@amusementtoday.com](mailto:gslade@amusementtoday.com)

## Tidbits



Slade

It appears that Seaside Park, N.J. just can't catch a break. Almost a full year after Superstorm Sandy caused historic damage to the Jersey Shore tourism and park industries, the city's well-known FunTown Pier went up in flames on Sept. 12.

The fire was so massive it took all available area units to help bring the multi-block blaze under control.

Fresh off her trip to Santa Cruz Beach Boardwalk and the Golden Ticket Awards, NJAA Executive Director Kim Samarelli was thrust back into action helping serve meals to the first responders well into the morning hours as firefighters worked to control the blaze. Kim's husband, James, also stepped back into service helping work the pumper trucks for the firefighters as they fought the fires.

New Jersey Governor Chris Christie has pledged \$15 million in state aid for businesses damaged by the massive boardwalk fire. During a trip to the fire scene, he met privately with 30 of the more than 50 business owners who suffered complete losses in the fire, which could be seen for miles up and down the coast.

See AT's complete fire coverage on page 34.

The Texas waterpark family will grow again in 2014, as new parks continue to be announced. Recently announced were an unnamed waterpark for Corsicana and Schlitterbahn Corpus Christi. Now, Hawaiian Falls newest property in Pflugerville is public. Not stopping there, we are hearing Hawaiian Falls has yet another Texas property on the horizon. By AT's count that will now place Texas with 40 waterparks and/or city-owned facilities throughout the state!

Having just completed a recent tour of the Chance Rides factory it's good to see the Wichita company in full production mode. Coaster track, Ferris wheels, trams, carousels and trains all were just a portion of work underway in the multiple buildings for 2014 deliveries. It's a good sign for our industry as we have reports from many other suppliers that are also a full capacity leading into the IAAPA show, thanks to parks making early purchasing decisions.

—Gary Slade

Gary Slade is founder and publisher of Amusement Today

**CARTOON:** Bubba Flint



**EDITORIAL:** Andrew Mellor, [amellor@amusementtoday.com](mailto:amellor@amusementtoday.com)

## A walk (or ride) on the wild side



Mellor

As I write this month's editorial column the TV news stations here in the U.K. are getting very excited about the possibility of the birth of a baby giant panda at Edinburgh Zoo in Scotland; it made me think about other animal based attractions that have been in the industry news of late and

which have been created as major additions to parks around the world.

I have reported on a couple of these myself this year for AT. In July, for example, we ran a story about the new Lost Valley at Samsung Everland in South Korea, a one-of-a-kind safari attraction built at a cost of no less than US\$50m, while in the same issue we published another article (by Pam Sherborne), this time on the new Safari Off Road Adventure at Six Flags Great Adventure in Jackson, New Jersey. According to the park this represents its most significant improvement in the venue's 40 year history and replaces the more traditional Wild Safari attraction. By all accounts, it has been a tremendous success.

In this issue of AT we also cover the final phase of the new Realm of the Lions at West Midland Safari Park in the U.K., the latest animal exhibit to be incorporated into the park's four-mile self-drive safari. Again, considerable investment has been made in this latest feature and it has added another carefully designed element to the visitor experience.

Also in the U.K., Chessington World of Adventures near London, well-known for its zoo, opened the new Zufari attraction this year which allows guests to "go on safari" in custom-built, off-road trucks and view a range of different species close up in newly developed open spaces.

No doubt other animal attractions have been created or revitalized elsewhere too and are, hopefully, enjoying the same levels of success and popularity as those mentioned here. Such attractions are perfect family entertainment while, of course, also being educational, so it's not surprising to see parks investing significantly in them. I'm sure more animal based attractions will come on stream in the future as parks look to provide additional experiences that appeal to all ages.

### AMUSEMENT TODAY STAFF

**Gary Slade, Founder**  
Publisher and Editor-in-Chief  
[gslade@amusementtoday.com](mailto:gslade@amusementtoday.com)

**Stacey Childress / Childress Media**  
Web & Graphic Design  
[stacey@childress-media.com](mailto:stacey@childress-media.com)

**John Robinson / W.H.R. Inc.**  
Daily E-mail Newsletter  
[johnwrobinson@cinci.rr.com](mailto:johnwrobinson@cinci.rr.com)

**Tim Baldwin**  
Editorial  
[tbaldwin@amusementtoday.com](mailto:tbaldwin@amusementtoday.com)

**Dean Lamanna**  
Editorial  
[dlamanna@amusementtoday.com](mailto:dlamanna@amusementtoday.com)

**Pam Sherborne**  
Editorial  
[psherborne@amusementtoday.com](mailto:psherborne@amusementtoday.com)

**Scott Rutherford**  
Editorial  
[srutherford@amusementtoday.com](mailto:srutherford@amusementtoday.com)

**Jeffrey L. Seifert**  
Editorial / Special Projects  
[jseifert@amusementtoday.com](mailto:jseifert@amusementtoday.com)

**Sammy Piccola**  
Accounting / Circulation  
(817) 460-7220  
[spiccola@amusementtoday.com](mailto:spiccola@amusementtoday.com)

**Sue Nichols**  
Advertising  
(615) 662-0252  
[snichols@amusementtoday.com](mailto:snichols@amusementtoday.com)

**Bubba Flint**  
Cartoonist  
[bflint@amusementtoday.com](mailto:bflint@amusementtoday.com)

**AMUSEMENT TODAY**

**Deliveries**  
2012 E. Randol Mill Rd., Suite 203  
Arlington, Texas 76011

**Member of:**  
IAAPA, AIMS International, PAPA,  
NEAAPA, NJAA, OABA, WWA, TTIA,  
NAARSO and IISF

Subscription rates are: 1 year (14 issues) \$75 in the USA; \$100 elsewhere; 2 years (28 issues) \$140/\$180; 3 years (42 issues) \$200/\$250. Send check or money order (U.S. funds only, drawn on a U.S. bank) to Amusement Today, P.O. Box 5427, Arlington, Texas 76005-5427. Your cancelled check is your receipt. Please allow up to six weeks for your subscription request to be processed and the first issue mailed.

Amusement Today is an independent newspaper, published monthly by Amusement Today Inc., P.O. Box 5427, Arlington, Texas 76005. Presort Standard Postage (Permit No. 2069) pre-paid at Fort Worth, Texas. The entire contents of this newspaper and its related websites are copyrighted and trademarked by Amusement Today 2013, with all rights reserved.

POSTMASTER: Please send address changes to Amusement Today, P.O. Box 5427, Arlington, Texas 76005-5427.

**Contributors:** Asbury Park Press, Andrew Mellor, Richard Munch, B. Derek Shaw, Janice Witherow, WHR Inc.

# 2 MINUTE DRILL



STORY: Janice Witherow

## David Cromwell, Aquatica San Diego

David Cromwell began his SeaWorld career in 1997 when he hosted at the Sea Lion and Otter Stadium in San Diego. He has since held several positions within the company, including a stint at Busch Gardens Williamsburg's Water Country USA. Today David assumes the role of vice president of Aquatica San Diego, SeaWorld's waterpark, where he is responsible for all aspects of the park's daily operations. When not working, he enjoys spending time with his wife (whom he met while both were working at SeaWorld San Diego) and children, and is a fan of baseball, football, basketball and golf.



As Vice President of Aquatica San Diego, David Cromwell is often seen in the newly-branded park, interacting with both parks guests and his outstanding team of park employees and lifeguards. AT/GARY SLADE

### Title

Vice President.

### Number of years in the industry

16.

### Best thing about the industry

The variety. No day in the park is ever the same.

### Favorite amusement ride

Manta at SeaWorld San Diego.

### If I wasn't working in the amusement industry, I would be ...

Teaching.

### Biggest challenge facing our industry

The state of the economy and the impact it can have on consumer confidence and discretionary spending.

### The thing I like most about amusement/water park season is ...

Working with our team members. I especially enjoy getting the opportunity to catch up with returning team members and hearing about what they have been up to since the end of our last season.

### My first car was ...

A 1967 Volkswagen Bug.

### A recent life-changing moment for me was ...

Returning to San Diego this past December after working at Water Country USA in Williamsburg, Virginia, the last few years.

### I really love my ...

TV.

### My favorite place to unwind is ...

At home with my family.

### To me, the scariest movie monster of all-time is ...

Alien.



Cromwell

The magical power I wish I had is ...  
X-ray vision.

It's October! My favorite Halloween costume growing up was ...

A baseball player.

Kanye and Kim named their baby North West. What in the world is up with that?

I'll pass on that.

Pick one: country house or big-city condo ...  
Country house.

I can't let a week go by without ...  
Watching Sportscenter.

My best vacation ever was ...

A trip last year with my family and some close friends to the Outer Banks in North Carolina.

The magazine cover I would most like to appear on would be ...

Fortune.

I am afraid of ...

Snakes.

The all-time best ad slogan hands-down is ...  
SeaWorld San Diego's Manta – "Ride the Ray, Feel the Rush."

On my last birthday, I ...

Worked and went out to dinner with my wife and kids.

Favorite midnight snack

Popcorn.

Three things on my "bucket list" are ...

1) Watch a MLB game at every stadium in the country; 2) Take my wife on a European vacation; and 3) Visit Australia.

My neighbors probably think I am ...

Never home.

## THIS MONTH IN HISTORY

Presented by



www.RollerCoasterMuseum.org

•**1912:** In the October 26 issue of *Billboard*, what may be debatably the first children's or kiddie coaster was described as a highly profitable operation. Installed in just three weeks in 1911, the **Coaster Construction Company** (headed by **Arthur Jarvis**) opened the "baby" coaster at **Revere Beach**, outside Boston, Mass. with little fanfare. Jarvis explained that the coaster's footprint was just 84 feet by 142 feet and earned \$32,000 after July 4. He may have been the first designer to understand the market for younger riders not ready for the larger coasters of the day. The ride remained successful for several years and may have been known under a different name — **Baby Scenic Railway**.

•**1925:** In an announcement at the Westchester's Commissioner's office on October 9, **Westchester County** paid \$410,000 for **Rye Beach**, in Rye, New York. Considered a move to expand the Westchester County Park system, the title to 13 acres at Rye Beach, including **Rye Beach Pleasure Park**, would pass to the Westchester County Parks Commission on Oct. 21. The land, which was to be part of the proposed county park system at Rye Beach, would eventually be included in the construction of **Playland** in late 1927.

•**1926:** Having acquired additional parcels on the Long Island Sound shoreline, the **Westchester Commission** announced plans on October 18 to build a model playground in Rye, New York. The new park would include amusements, a public beach, nature trails and other attractions (the Casino with ice skating and dancing would arrive in 1929). The site would essentially consume two existing amusement parks, a landfill and a swampy inlet that would be filled in. The original estimated cost was \$1million, but would ultimately reach over \$5 million by the time **Play Land** opened 19 months later, in May 1928.

•**1929:** In early October, **J. Norman Bartlett** of **Miller & Bartlett**, reported that the experimental new device, the **Flying Turns**, was successfully being tested at **Lakeside Park** in Dayton, Ohio. The experimental period included operating three car trains for two weeks, as well as testing the coupling device, allowing single cars to run in a train together. Bartlett said that both he and Miller were satisfied the device would work and would open the ride for just a few weeks. Now just 84 years later, **Knoebels Park**, in Elysburg, Pennsylvania is about to open their version of the classic ride, built from the ground up and also experimental in nature.

•**1931:** Former State Senator **William H. Reynolds** died on October 13 of heart disease, at the age of 63. The popular politician and housing builder was founder of the community of Long Beach, on Long Island, New York, where he served as mayor. A New York State Senator at age 24, he opened an office as a realty broker at age 18, then went on to manage theaters and race tracks. Probably his greatest project was the development and building of **Dreamland** in Coney Island, Brooklyn, New York, which opened in 1904. He was 36. His life was considered by many as out of the ordinary, growing up penniless, but quickly becoming wealthy at a young age (some sources claim he was a millionaire by age 20). While Dreamland was decimated by fire in May, 1911, Reynolds would continue building a vast empire of major housing projects throughout Brooklyn (many which still exist today), as well as on Long Island.

—Compiled by Richard Munch, NRCMA and Jeffrey Seifert, AT

AMUSEMENT TODAY™

P.O. Box 5427  
Arlington, Texas 76005-5427  
(817) 460-7220  
Fax (817) 265-NEWS (6397)



Get a free QR Code scanner for your phone by visiting [www.mobiletag.com](http://www.mobiletag.com).

IAAPA

5-time Award Winner

facebook

Find us on Facebook  
[facebook.com/amusementtoday](http://facebook.com/amusementtoday)

twitter

Follow us on Twitter  
[twitter.com/amusementtoday](http://twitter.com/amusementtoday)

YouTube

Subscribe to our YouTube channel  
[youtube.com/amusementtoday](http://youtube.com/amusementtoday)

## Basala says WWA is important resource for waterpark industry

WEST PALM BEACH, Fla. — Jim Basala, superintendent of business development, Lake County Parks Department, Crown Point, Ind., enters his second year of a two-year term as chair of the World Waterpark Association.

Going into the WWA Symposium, set for Sept. 30-Oct. 3, West Palm Beach Fla., Basala takes some time to speak to *Amusement Today* on the state of the waterpark industry.



Jim Basala

As an aquatics focused industry, we are particularly sensitive to this issue and will continue to bring attention to teaching swimming skills to all ages and to making parents aware of water safety and their responsibility in ensuring their children's safety.

**Having spent time as WWA chair, what have you found that most owners/operators of waterparks find most challenging over the last couple of years?**

After many of our members experienced one of the worst weather years ever and its resulting impact on attendance, I believe one of the issues moving forward is for each of us to remain positive and continue to develop our products and brands. We all know that for the bad years, there will also be very good years and we need to be ready to capture all those good years have to offer.

Through our various membership committees, the WWA is providing those educational and networking opportunities to help our members develop and grow their operations.

The association also keeps our members informed on the myriad of governmental and regulatory issues that affect them.

Providing services to the membership is what the association is all about and if our members are solid, then so is the association.

**What do you hope to personally achieve over this second year as WWA chair?**

As chairman, my goal for next year is to aid the WWA membership in continuing what it has always been — the premier association of the industry.

—Pam Sherborne

## ▶WWA

Continued from page 1

educational programs to our operator members, the WWA will be hosting an Asian Symposium in Malaysia and Indonesia in 2014.”

They also report that more financing is becoming available for waterpark projects.

The following is a list of some of the parks and locations that saw significant projects this year:

- Wet 'n' Wild Las Vegas, U.S.
- SoakYa Waterpark at Lake Winnepesaukah, U.S.
- Paradise Island Water Park, China
- Splash & Spa Tamaro, Switzerland
- Lions Water Adventure, U.S.
- Crystal Waterworld Resort & Spa, Turkey
- Rostov Indoor Waterpark, Russia
- Splash Kingdom Waterpark in Hudson Oaks, U.S.
- Aquatica San Diego, U.S.
- The Beach Waterpark, U.S.
- Yas Waterworld Abu Dhabi, UAE

Networking is a very important feature of the WWA event and, as always, there are ample times and places for this. Aside from the trade show and before, during, and after educational sessions, WWA always provides more social atmospheres. There is the annual golf tournament set for Monday, Sept. 30, and new this year is a tennis tournament set for the same day.

The Developer's Reception will be held this same day, Sept. 30, from 5:30 - 6:30 p.m.

Attendees of the Design, Development & Expansion Workshop will have the opportunity to network with other developers, designs and manufacturers at this reception.

The Annual Reunion Party is set for Tuesday, Oct. 1, at the Rapids Water Park. It will run 7-10 p.m. A behind-the-scenes tour is planned along with food and entertainment.

On Wed., Oct. 2, the City-Place Party at BB King's Blues Club is set for 7:30 - 10:30 p.m.

The Keynote Session is set for 10 - 11 a.m., Wednesday, Oct. 2. During this session Eric Chester, a well-known speaker on work ethic and how to engage with employees and improve performance, will



The 2013 WWA Annual Symposium & Trade Show will run Sept. 28-Oct. 3 in West Palm Beach, Fla. The event will be held at the West Palm Beach Convention Center. Here is a photo from last year's show in Las Vegas. New programs and educational sessions await attendees this year. WWA officials were please with registration at the first of September and were equally pleased with being back in South Florida. COURTESY WWA

take attendees on a back-stage tour inside the minds of the young people management relies on as front-line employees.

The educational program schedule at the WWA Show is full of vital information for any waterpark owner or manager or for someone thinking about going into this industry. And, as always the WWA is delivering a plethora of sessions, many of which are new.

“Last year, our newly

launched WWA University Food & Beverage School was such a bit hit, that we decided to continue it and launch the new WWA University Waterpark Maintenance School,” Root said.

This maintenance program is a full day scheduled for 9 a.m. - 5 p.m., Monday, Sept. 30. It will feature top industry experts presenting topics designed to help waterpark operators improve their

▶ See WWA, page 5



One of the more significant movements in the waterpark industry for 2013 was the opening of Wet 'n' Wild, Las Vegas. The park, owned by SPB Partners and Village Roadshow, boasts more than 25 slides and attractions including this 17,000-square-foot wave pool, called the Red Back Bay, capable of producing three-foot high waves. Whitewater West Industries, Richmond, B.C., worked on this project supplying such slides as the Rattler and the Constrictor, as well as a custom-themed AquaPlay, a RainFortress, a High Thrill waterslide complex, a Multi-Lane Mat Racer, and a Boomerango/SuperBowl complex.

COURTESY WWA

## ►WWA

Continued from page 4

periodic, routine and preventative maintenance programs.

Presenters will include Billy Hamilton, Rafael Suarez, Andrew Chafatelli, Chris Shillcutt, Michael Beatty, Robert Kappel, Tom Schaefer, Beth Hamil, Dustin Kauffman.

Other new programs set for Monday, Sept. 30 include:

- Social Media Done Right - Interactive Workshop, presenters Tina Hatcher, Shawn Bowman, and Tim Morrow;

- Marketing Plan Workshop: Work Smarter with Marketing Plans That Work – How to Best Spend Your Time and Money, presenters Peter A. Fingerhut and Nancy DiGiammarco.

New programs set for Tuesday, Oct. 1, include:

- “Show Me the Money” Making Corporate Sponsors into Corporate Partners, with presenter Judith Leblein Josephs, CPRA, RA;

- Food and Beverage Best Ideas! With presenter Michael Holtzman;

- Finding Your Way – A Legal Guide to Facility Signage, presenters David J.

## 2013 World's Largest Swimming Lesson gains strength by numbers

OVERLAND PARK, Kan. — Tuesday, June 18, 2013 was another banner day for the World's Largest Swimming Lesson (WLSL) with hundreds of waterparks, pools, swim schools, YMCA's and aquatic facilities around the globe hosting an event to build awareness about the vital importance of teaching children to swim to help prevent drowning.

The official world record for 2013, certified by Guinness World Records, is 32,450, representing facilities in 40 U.S. states and in 13 countries across four continents.

This is a 30 percent increase in the number of people who participated in the live WLSL event, according to Aleatha Ezra, director of park membership development.

Swimming is a life-saving skill for children and a vital tool to prevent drowning, the second leading cause of unintended, injury-related death for children ages 1-14.

In its fourth year, the growth of the WLSL has continued its forward momentum, especially in support by waterpark facilities. This year's event saw 95 waterparks host WLSL events, which accounted for 10,006 participants out of the total submitted to Guinness World Records for certification. This represents a 70 percent increase in the number of waterpark host locations over last year.

—Pam Sherborne

Daly, Esquire, Gaylee W. Gilim, Esquire, and Lary Zucker, Esquire;

- Attractions Maintenance: Servicing Today's High Tech Rides, presenters Chris Shillcutt and Rafael Suarez;

- When the Media Wave Comes Crashing – Avoid Instantaneous Combustion! Presenter Lisa B. Raun.

- Learn to Look: New Tools for Better Lifeguards, presenter Lake White;

- Real World Design Charrette, presenters Nicholas Nueman, Chris Nania, Mike Jaroszewski, and Joel Roderick;

- Litigation Landscape:

What You Need to Know About Recent Waterpark Cases, presenters Kurt Anselmi, Esquire, Joseph Brownlee, Esquire, and Debbie Sweeney.

New programs set for Wednesday, Oct. 2 include:

- Social Media: Branding and Beyond, presenters Jennifer Ross and Jason McCollim;

- X+Y ≠ Z: Managing Generations in the Workplace, presenter James Barnes;

- Commercializing Water Parks Owned & Operated By Local Government, presenters Kevin Abbate and Craig Anderson;

- Understanding and Preventing Lifeguard Failure,

presenter James Wheeler;

- Professionalizing Your Preventive Law Program - On a Budget, presenter R. Wayne Pierce, Esquire

New programs set for Thursday, Oct. 3, include:

- Successful Pool Renovations: They Don't Happen Without You, presenter Mark Abdo;

- Drowning Prevention and Community Outreach – How You Can Lead the Way, presenters Kim Burgess and Karol Komar;

- Building Your PR Toolbox – Your Key to FREE Marketing, presenters Jessica Steinberg and Zack McIntyre;

- Taking Your Team to the Next Level, presenters Kari Tjader, Blake Ford and George Deines;

- WATER YOU MISSING? – Safety Practices in the Water Park Industry, presenters Eric Dombrowski and Adam Blackmore;

- Let The Five Languages of Appreciation Work for You! Presenter Amy Blackman, CPRA;

- The Wired Pump Room, presenters Chris Swartz, Scott Hester, Robert Kappel, Nicholas Nueman, and Brett Steinbrueck.





# imagine

## MORE REVENUE

If you want to increase sales and earned income, look no further than the resources available to you at IAAPA Attractions Expo 2013.

Explore the trade show floor for innovative products designed to add value and streamline operations.

Discover tips and techniques for improving efficiencies as you learn from other professionals at more than 80 education sessions.

Expand your professional network, and uncover revenue-boosting trends from industry colleagues from around the world.

### IAAPA ATTRACTIONS EXPO 2013



@IAAPAHQ

REGISTER BEFORE NOV. 2 AND SAVE 25%.

[www.IAAPA.org/IAAPAAttractionsExpo/AT](http://www.IAAPA.org/IAAPAAttractionsExpo/AT)

Conference: Nov. 18–22, 2013 • Trade Show: Nov. 19–22, 2013

Orange County Convention Center • Orlando, Florida USA





# INTERNATIONAL

PARKS

ATTRACTIONS

RESORTS

SUPPLIERS

## Aquaventure at Atlantis, The Palm adds 'raft' of new attractions

**STORY:** Andrew Mellor  
amellor@amusementtoday.com

DUBAI, U.A.E. — A range of thrilling new and original attractions have been added to Aquaventure Waterpark at Atlantis, The Palm in Dubai, providing a host of new experiences for visitors.

The expansion of the 17 hectare waterpark with a number of innovative developments incorporates several of world firsts, including the world's largest diameter slide, the world's first vertical family ride and the first double slide within a slide experience, allowing tube riders to watch fellow sliders in action, suspended above them.

The venue has also become home to the longest zip line circuit in the Middle East and the first to be integrated into a waterpark tower, with riders flying high above the waterpark and Aquaventure Beach, enjoying spectacular views out over the resort and The Palm.

Having originally installed a number of attractions at the park from WhiteWater West, management have again turned to the Canadian company for Aquaventure's latest additions, which include a six waterslide complex bulging with features not seen before.

Anchored by an impressive 40 meter (131 foot) tower, the Tower of Poseidon, the complex was unveiled in August and among the world firsts to be featured within it are two AquaTubes, under the name of Slitherine, which fly through

the Anaconda raft ride, the world's largest diameter waterslide at 9 meters (30 feet). The flume-thru-flume technology offers a waterslide experience, allowing Anaconda riders a spectacular view of the AquaTubes right above their heads.

Also new to the park and to the Middle East region, and again from WhiteWater, are a Family Boomerango, called Zoomerango, and two Duelling AquaLoops, which go by the name of Poseidon's Revenge. Six people can ride together on Zoomerango, a family Boomerango that offers a sudden drop into a vertical zoom to provide a burst of weightlessness, while guests on Poseidon's Revenge will step into one of two drop capsules in the UAE's only dual racing loop waterslide. Once the floor drops, guests will achieve speeds of 60 kmh before entering a waterslide loop.

In addition to the water rides, the Atlantean Flyers is yet another new attraction, this being the world's first zip line to be integrated into a waterslide tower. The experience offers guests the chance to "fly" over the park on two-lane, two-way zip lines spanning three towers, on a 500-meter (1,640 foot) long circuit.

"We are thrilled with the opportunity to work with Atlantis, The Palm, and proud to have created innovative attractions which offer thrilling and unique experiences to their guests," commented Geoff Chutter, WhiteWater president & CEO.



The Tower of Poseidon at Aquaventure provides an impressive new feature at the park and the starting point for six waterslides. COURTESY AQUAVENTURE WATERPARK



Visitors to Aquaventure Waterpark at Atlantis, The Palm can enjoy flume-thru-flume technology with AquaTubes that fly through the Anaconda. COURTESY WHITEWATER WEST



**ITAL**  
International  
LLC

## Major, Family and Spectacular Rides





Swing Buggy



Bertazzon: Park Model & One-Trailer Rides



Technical Park: Park Model & One-Trailer Rides

Check out the hundreds of new and used rides at [www.italintl.com](http://www.italintl.com)

**Ital International LLC | Phone: 615-383-3986 | Fax: 615-383-9244 | E-Mail: sales@italintl.com**

## Europa-Park gets 'Green' designation

Europa-Park, Rust, Germany, has been certified as the world's first 'Green Amusement Park' by TÜV SÜD Industrie Service. Certification focuses on areas such as building services and amusement ride systems, construction, land use, transport planning and the handling of waste-water and existing contamination. During a period of approximately six months, TÜV SÜD's experts assessed the amusement rides and the park's five hotels for their sustainability, energy efficiency, environmental compatibility and technical quality.

COURTESY EUROPA-PARK



# Denmark's Tivoli Gardens celebrates 170th anniversary

**STORY:** Andrew Mellor  
amellor@amusementtoday.com

COPENHAGEN, Denmark — The world-famous Tivoli Gardens in Copenhagen celebrated its 170th anniversary on August 15.

The park has provided entertainment to millions of visitors since its inception in 1843 at which time a merry-go-round and a roller coaster were the two rides on offer. Indeed, a wooden roller coaster (1914), Ferris Wheel (1943 and an imitation of Tivoli's first such ride from the 1880s) and the vintage cars (1959) are still among the park's most popular rides. In 2013, there are now 27 rides, including the brand new Aquila, a themed Zamperla Air Race, and the park continues to change and develop as the years go by. As its founder Georg Carstensen said, "Tivoli will never be finished."

In addition to the rides, Tivoli plays host to more than 300 concerts each year and has around 30 food outlets. It has become a world renowned brand that tourists

are prepared to travel to from all parts of the globe. To celebrate this year's milestone in its history an ambitious program of musical experiences was arranged for the actual anniversary day. Among others, the Tivoli Symphony Orchestra took guests through the last 170 years with a mammoth concert, while also entertaining in the Concert Hall with film music focusing on Hollywood classics. Additionally, music and pantomime in other venues in the park added further to the day's entertainment.

When it opened, Tivoli was an instant success and 175,000 people visited the gardens during the venue's first, short season. Today, the park attracts approximately four million visitors a year, spread over three seasons — summer, when around three million visit, Halloween at Tivoli, when around 400,000 visit, and Christmas at Tivoli, when approximately 800,000 guests come to the park.

Commenting on the anniversary, Tivoli CEO Lars Liebst said: "If I were to describe what Tivoli is, then



Tivoli Copenhagen opened the new 600-square-meter Tyco Brahe themed area in 2013. The centerpiece of the area is an Aquila (above) from Italian manufacturer Zamperla. Above right, the park Karruselca as seen in 1865. Below, The Rutschebanen wooden coaster, seen in with crew members in 1914. COURTESY TIVOLI

I would have to say it is diverse. Tivoli has always been for everyone. We must continue to live up to the expectations of our guests and, at the same time, provide them with such a positive and thrilling experience that they recommend others to visit Tivoli. We bear the heritage of Georg Carstensen's ideas and we remember his words that Tivoli will never be finished."



Tivoli Copenhagen is known for its beautiful and well-kept gardens in the park as seen in these AT file photos. AT/TIM BALDWIN



# Angry Birds fly into U.K.'s Lightwater Valley

*Themed attraction is now the second of its kind to open in U.K.*

RIPON, U.K. — A major new play area based on the Angry Birds franchise has been entertaining guests at Lightwater Valley in North Yorkshire, U.K., this season following its opening in late May.

Covering an area of 30,000 square feet (2,787 square meters) and incorporating both indoor and outdoor play, the Angry Birds Activity Park represents an investment of over £1 million (U.S. \$1.53 million) and features play equipment produced by well-known provider Lappset. It will be a year-round attraction for the traditionally seasonal park and commenting on its addition, Mark Bainbridge, chief executive at Lightwater Valley, said: "We've had over 50,000 people through the doors at the new Angry Birds Activity Park since opening. What is really great about the attraction is that it sparks kids' imaginations — because it's not a ride, but a whole world for them to explore, they immediately start to create their own games, their own worlds — and it's that kind of active engagement that keeps them busy for hours on end. It's a great addition to our offer this season, along with Lightwater Valley Falconry and Eagles' Creek Farm tractor ride, ensuring that we really do have something great to offer younger families, as well as thrill seekers."

For Rovio Entertainment, the creator of the globally successful Angry Birds franchise,

Dan Mitchell, director of location based entertainment, commented: "We are very excited to have an Angry Birds Activity Park at Lightwater Valley. It has been a great partnership with everyone involved."

This is the second Angry Birds Activity Park to open in the U.K., the first making its debut last year at Sundown Adventureland in Nottinghamshire. The attraction combines the digital world of the game with the physical world, through activity-based play. In the outdoor Angry Birds world adventurers can explore 25-foot-high nesting towers (the main climbing frame elements), pig tunnels, climbing walls, slides, rope bridges and ladders and interactive dance games — all encouraging them to be physically active. In the indoor Angry Birds Space-themed area, there is multi-layer play equipment for younger children, as well as Angry Birds Space light and sound projections.

Technology also features heavily within the attraction, with five 55-inch touch screen computers which play a customised level eight version of Angry Birds, play equipment that is fitted with panels which respond to body weight and make the Angry Bird noises when guests move over them, big yellow and red arch games called Sona and a game called Game Netic and other audio visual systems.



Lightwater Valley's Angry Birds attraction covers 30,000 square feet and incorporates both indoor and outdoor play areas. COURTESY LIGHTWATER VALLEY



We'll give your guests' taste buds a thrill.

Your hungry guests will flip over pulled-pork sandwiches featuring our world-famous Montgomery Inn Barbecue Sauce.



WWW.MONTGOMERYINN.COM

# U.K.'s West Midland Safari Park completes lion exhibit



The new Realm of the Lions is now part of the four mile, self-drive safari at the U.K.'s West Midland Safari Park. COURTESY WMSP

**STORY:** Andrew Mellor  
amellor@amusementtoday.com

BEWDLEY, U.K. — The last stage of the new Realm of the Lions exhibit has been completed at the U.K.'s West Midland Safari Park (WMSP) with the new lion house having become fully functional and home to the park's pride of 13 African lions.

The £500,000 (U.S. \$778,000) state of the art accommodation is the third and final part of the new lion exhibit which was opened earlier this year to mark the park's 40th anniversary. The first stage included the opening of a fully landscaped reserve, with carved rockwork, waterfall and pool, and this was followed by an off-road track that runs parallel to the tarmac drive through.

The new house is complete with central heating, air conditioning, CCTV, intruder alarms and modern-day, open plan living, while also incorporated into the building is outside access, individual lion housing and staff accommodation. One of the most innovative features is the amount of glass that has been used in the building, not the usual choice for a lion house but a design element which allows for perfect observation by staff.

"Now that the lions have been successfully moved into their new accommodation, it marks the completion of this major three-phase project," commented WMSP's creative designer David Powner. "It has been one of the largest developments that has been created in-house for many years

and the entire team is absolutely delighted with the finished result."

The Realm of the Lions reserve is the latest animal exhibit to be incorporated into the four mile, self-drive safari at WMSP. Representing an investment itself of £750,000 (U.S. \$1.16 million) it has been fully landscaped to create the appearance of savannah grassland and is themed with boulders, plants and sculpted lion head rockwork from which a waterfall cascades into a pool below. More importantly, however, the entire area, which spans almost seven and a half acres, provides important and essential enrichment for the park's lions and an outstanding new reserve in which to roam.

Visit us at the IAAPA  
in Orlando,  
Nov. 18 - 22  
Booth 4867!



Gerstlauer Amusement Rides GmbH  
Industriestraße 17  
D-86505 Münsterhausen  
Tel. (49) 8281 - 99 68 0  
Fax (49) 8281 - 99 68 33  
www.gerstlauer-rides.de  
info@gerstlauer-rides.de



## Infinity Coaster

Maximum Freedom  
for Riders





# PARKS & ATTRACTIONS

RIDES

ENTERTAINMENT

REVENUE

SUPPLIERS

## Holiday World invests \$8 million in 2014 park plans

*New Chance Rides swinging ship themed as the Mayflower; restaurant planned*

SANTA CLAUS, Ind. — Even though summer is over, officials at Holiday World are already setting their sights on the 2014 season. They recently announced the cost of next year's improvements will total \$8 million, and will include a new ride, expansion of the Thanksgiving area of the park and a host of other projects.

"Since 2006, when we expanded Holiday World to include a Thanksgiving-themed section, we've received hundreds of suggestions to add a classic swinging ship ride and



Holiday World & Splashin' Safari recently announced \$8 million in improvements for the upcoming 2014 season. The project will feature expansion of the park's Thanksgiving area including the Mayflower (Chance swinging ship ride), extended operating hours, new restaurant and a number of other enhancements. COURTESY HOLIDAY WORLD

name it the Mayflower," said Park President Matt Eckert. "We chose the anniversary date of the Pilgrims setting sail for America to announce that our new ride for 2014 is our own Mayflower."

Eckert says the new family attraction, which will be supplied by Chance Rides, will carry up to 60 riders at a time, swinging in an arc 54 feet high over a pool of water.

"We're not finished with Thanksgiving," said Eckert. "Just as it's our American tradition to serve a bounteous Thanksgiving meal, there are more 'servings' planned for the coming years."

Additional projects for 2014 include:

- Friday Night Fireworks

(Friday evenings from June 13 through August 1).

- Extended Splashin' Safari hours.

- Summer Fun Card program, for multi-day summer visits.

- New restaurant and shop in Splashin' Safari.

- Covered-bridge entry to Thanksgiving section.

- More cabanas.

- Additional benches and shade structures.

- Parking lot improvements.

Despite the cost of next season's improvements, Eckert confirmed that ticket prices for Holiday World & Splashin' Safari will not increase in 2014.

## Amaze 'n Mazes opens high ropes course, laser maze opening Heritage Square



Created by Colorado-based Amaze 'n Mazes, the Denver area's new Rocky Mountain Ropes is a two-story high ropes course consisting of 25 elements in an airborne structure that looms over the Miners Maze at Heritage Square. A dark room crisscrossed with neon green laser beams is the setting for the Laser Maze. COURTESY AMAZE 'N MAZES



WINTER PARK, Colo. — Two new interactive attractions have recently opened in the Denver area's Heritage Square for children and adults that like to add some challenge to their amusement park entertainment. Rocky Mountain Ropes is a two-story high ropes course consisting of 25 elements in an airborne structure that looms over the Miners Maze.

Created by the Colorado-based Amaze 'n Mazes, the course presents a series of moving parts and pieces that provide physical and mental challenge to navigate. A dark room crisscrossed with neon green laser beams is the setting for the laser maze challenge that requires a quick eye and careful movements to navigate the maze while avoid-

▶ See AMAZE, page 12

**Intermark Ride Group**

- abc rides switzerland
- Cogan Kiddie Rides
- Moser Rides
- Used Rides & Games
- Wattman Trains

www.intermarkridegroup.com  
TEL 615.370.9625 FAX 615.370.8852

**Creating Memories & Profitability**



Voodoo Interactive Raft, abc rides



Hoopla, Moser Rides



Wattman Mini Express

# AMUSEMENT MARKET PLACE



**NEW PORTABLE MAZES!**  
Steel Framework is Easy to Assemble & Break-down.

NEW Mazes by:

**AMAZE MAZES**

Ask about our Maze Themes: Aqua, Miner's, Safari Aqua and Ropes Mazes.  
IAAPA Show Booth #3921  
World's #1 Maze Builder

970.531.5334 / [www.AmazenMazes.com](http://www.AmazenMazes.com)

**EXPLORING SALE OR MERGER OPPORTUNITIES**



35-year-old, 20-acre park with 100 acres to expand Successful, growing, now formulating new five-year plan.  
Contact only Harry | [thunis15@aol.com](mailto:thunis15@aol.com)  
[www.thunder-island.com](http://www.thunder-island.com)



**Midway Stainless Fabricators**  
Hillsdale, NJ 908-624-9660  
[www.midwaystainless.com](http://www.midwaystainless.com)  
[mikecurci@midwaystainless.com](mailto:mikecurci@midwaystainless.com)  
Michael Curci cell# 732-718-2777



**WATERLOO**  
[www.waterloofent.com](http://www.waterloofent.com)  
1.800.537.1193

Custom Amusement Canvas

We offer a magnetic brake for any application. Whether it is a Tea Cup that needs to hold a little tighter, a Roller Coaster that needs to stop a lot smoother, or a Shoot-the-Chute that needs speed reduction, a magnetic retrofit offers motion control in custom applications.

We know that the maintenance budget is always under pressure from above, that is why we have made financing available for our magnetic brake projects. We can help spread payments out over a season so you pay for the brakes when your cash flow is the best.

**EMG**  
ENTERTAINMENT MANAGEMENT GROUP

**RIDE**

Entertainment Management Group  
1-410-643-9300, ext. 303  
[www.RideEntertainment.com](http://www.RideEntertainment.com)

**AUDIO INNOVATORS INC.**

**YOUR ONE SOURCE FOR ALL DIGITAL MESSAGE REPEATERS & COMMUNICATING EQUIPMENT NEEDS.**

WATER PARK SAFETY - GO-KART PIT SAFETY - KIDDY RIDES  
FRONT GATE - COASTERS - GROUP GAMES  
SAFETY MESSAGES SYSTEMS OF ALL KINDS.  
ALL ARE WITCH TURN-KEY.

WE SERVE AMUSEMENT PARKS OF ALL KINDS.  
AIRPORTS, WATER PARKS, TRANSPORTATION COMPANIES.

VISIT OUR WEB SITE FOR MORE DETAILS AND VIDEO DEMOS  
[WWW.AUDIOINNOVATORS.COM](http://WWW.AUDIOINNOVATORS.COM)  
OFFICE 800.222.9929 - FAX 813.200.4600 - [SALES@AUDIOINNOVATORS.COM](mailto:SALES@AUDIOINNOVATORS.COM)

**WAPELLO is the One!**  
*Built in the USA to Your Needs!*



Let Wapello high-performance products go to work for you. Give us a call or write today. Custom sizes, shapes and colors.

Wapello Fabrications Company  
201 North Second Street • Wapello, IA 52653  
(319) 523-8371 • [wafabco@louisacom.net](mailto:wafabco@louisacom.net)

**WAPELLO**

**R&R CREATIVE AMUSEMENT DESIGNS, INC.**

DESIGNERS OF THEMED ADVENTURES



DESIGN & PLANNING - SHOW DESIGN - THEMATIC DEVELOPMENT  
(714) 776-5234 [www.randrdesign.com](http://www.randrdesign.com)

## ▶ AMAZE Continued from page 11

ing the laser beams. For the ropes course, participants are secured in a harness with a 10,000-pound capacity before starting up the path that follows a track leading from one challenge to the next — including swinging from multi-level swings; riding a skateboard across a tightrope, stepping across swaying discs, jumping across multi-level platforms and climbing over hanging barrels. The average time to navigate the course is about 10-15 minutes but it is not unusual to see times of 20 minutes

Kids are moths to the flame when it comes to human mazes and the thrill of twisting through a darkened maze while dodging laser beams adds an exciting new dimension for both experienced and novice maze chasers. There are four play levels and 20 different laser segments to create easy, medium and expert challenges so that all ages and abilities can experience the glowing darkness and compete with friends.

The fun and challenge of both attractions is definitely not just for kids. The new high ropes course was also created with an eye to offering team building and leadership training for adult groups and businesses. Both new attractions are available for exclusive opening times and private parties with advance reservations.

Human mazes have been growing rapidly in popularity around the world and in the past 15 years, Amaze 'n Mazes have installed more than 60 human mazes across the United States and Canada including their most recent openings in Pennsylvania and New Hampshire—as well as halfway around the world outside Perth, Australia. The Colorado company has introduced many firsts in the maze industry including the first ever water maze that opened in Bessemer, Ala. last summer.

For information about the ropes course and maze, visit [www.MinersMazeAdventureland.com](http://www.MinersMazeAdventureland.com).

**Keep our amusement park industry strong!  
Buy products and services from these suppliers.**



Fire Ball



Flying Scooters™



PO BOX 638 • Plainview, Texas 79072  
(806) 293-1353 • [www.larsonintl.com](http://www.larsonintl.com)



Super Shot



Tilt-A-Whirl™

# Six Flags plans record-breaking coasters, various rides for 2014

GRAND PRAIRIE, Texas — Six Flags Entertainment Corporation recently announced that innovation and world-class entertainment will again take center stage at its 18 parks across North America for the 2014 season. The company's lineup includes an impressive collection of world-record rides, family and kids attractions, and the addition of an all-new water park at its Georgia property.

"We are committed to delivering thrilling new attractions in every park every year and are tremendously excited about the 2014 season," said Jim Reid-Anderson, chairman, president and chief executive officer. "Next season's lineup is one of our most comprehensive packages ever as we truly offer something for every member of the family, from ultimate thrill-seekers to our youngest guests. Six Flags is going bigger each year as we create fun, thrilling and lasting memories for our guests."

Among the 2014 highlights:

**Six Flags Over Georgia** is unveiling the largest capital expansion in its 46-year history with the introduction of a massive, tropically-themed waterpark inside the theme park. Hurricane Harbor will include an 800,000-gallon wave pool, the world's first waterslide that blends both a swirling-bowl feature and a tornado-wave feature into one slide, a multi-slide tower, an interactive children's area, and much more — all in the first phase of a multi-year, multi-million dollar project. Its local sister park, Six Flags White Water — the largest waterpark in the South—is expanding its popular Dive-in Movies by adding an all new entertainment stage that will also host live entertainment performances at the legendary Atlanta Ocean wave pool. Suppliers had not been determined at press time.

**Six Flags Great America** is annihilating all other wooden-coaster records with the introduction of Goliath, which will shatter three world records. The coaster will boast the title of the world's fastest wooden roller coaster and also lay claim to the world's tallest and steepest drop on a wooden coaster. Goliath (supplied by Rocky Mountain Construction) will take riders up a



Goliath, Six Flags Great America (RMC)



Tsunami Soaker, Six Flags Discovery Kingdom and Six Flags St. Louis (Mack Rides)

165-foot lift hill, then plunge them down a record-setting 180-foot, 85-degree drop. Riders will experience speeds of up to 72 mph and blast into a number of unique maneuvers including three over-banked turns, a 180-degree Zero-G roll, an inverted drop and an inverted Zero-G stall.

New Jersey's **Six Flags Great Adventure** will surpass the world record for tallest drop ride with the addition of the 41-story Zumanjaro: Drop of Doom. Connected to the iconic Kingda Ka roller coaster that ranks as the world's tallest coaster and North America's fastest, Zumanjaro (supplied by Intamin) will hoist riders 415 feet into the sky and drop them back to earth at 90 mph while Kingda Ka trains launch directly toward them at speeds of up to 128 mph. For waterpark fun and entertainment, Hurricane Harbor is adding more VIP cabanas centered around a new tiki bar that will offer beverage service directly to the cabanas.

**Six Flags New England** will introduce the world-record tying New England Sky-Screamer swing ride (supplied by Funtime) that will become the park's tallest attraction and newest landmark. The

400-foot aerial adventure will lift guests 40 stories into the air and spin them at speeds of 40 mph. While aboard, riders will experience breathtaking views of the Connecticut River and the New England skyline.

Guests at **Six Flags Mexico** will experience a thrilling transformation of the park's iconic wooden roller coaster, Medusa, which will be re-engineered into a state-of-the-art hybrid coaster and emerge as Medusa Steel Coaster. The combination of a classic wooden structure with a new steel track (supplied by Rocky Mountain Construction) will provide a smoother, faster and more thrilling ride that will boast an incredible 117-foot drop, four over-banked turns and three exciting full inversions along more than 3,000 feet of track.

**Six Flags America** is introducing two rides inside a new Mardi Gras-themed section of the park. Ragin' Cajun, a Zamperla spinning coaster relocated from Six Flags Great America, will zigzag guests through quick twists, tight curves and drops while a family-friendly ride dubbed French Quarter Flyers (a Larson Intl. Flying Scooters ride) will delight both kids and adults as they



Ragin' Cajun, Six Flags America (Zamperla)



New Six Flags Hurricane Harbor at Six Flags Over Georgia

pilot and control their own ride experience.

**Six Flags Over Texas** is aiming its sights on the children's section of the park, which will include an interactive play area, new kids rides and a refreshed feel with more locations for parents to sit, relax and cool off while the youngsters explore. Nearby Six Flags Hurricane Harbor, the largest waterpark in North Texas, is adding to its collection of unparalleled water attractions with the debut of a new multi-featured waterslide. Suppliers had not been determined at press time.

**La Ronde's** guests will be under the devil's spell when boarding Demon, a disorienting ride that will carry passengers through a whirl of flips and spins. Riders will be at the mercy of two large metallic arms that take them through a series of unpredictable spins. The 32 passengers boarding Demon (a refurbished Roll Over from Mondial) will be swung upside down up to 45 feet high and twirled around between earth and sky while 16 water jets spout from the depths of the ride.

**Six Flags Magic Mountain** is offering an exciting twist on two of the park's be-

loved coasters. For a limited time, the popular inverted, Batman The Ride and the celebrated wooden racing coaster, Colossus, will run backwards. Additionally, aspiring thrill seekers and their families will be treated to a revitalized children's area — Bugs Bunny World, anchored by the launch of the area's fourth pint-sized coaster and a new show in the Carrot Club Theater. Summer-time waterpark fun is also on tap for 2014 when Six Flags Hurricane Harbor introduces Bonzai Pipelines — featuring two thrilling body slides — plus Dive-in Movies in the wave pool, new dining experiences and extended operating hours. Suppliers had not been determined at press time.

**Six Flags Great Escape** is debuting Extreme Supernova, which offers thrill seekers the ultimate rush, filled with stomach-dropping dips and inverted spins. Suspended from an overhead axis, 16 riders will fly head-over-heels up to 50 feet in the air through dual swinging and spinning motions. Once the outward-facing riders are secured and the floor drops from below, Extreme Supernova will swing back and forth while guests

► See SIX FLAGS, page 16

STATE  
OF  
THE  
ART

STEEP



TOPPER TRACK  
AS SEEN ON  
OUTLAW RUN  
BRANSON, MO USA  
SILVER DOLLAR CITY

I-BOX TRACK  
AS SEEN ON  
THE IRON RATTLER  
SAN ANTONIO, TX USA  
SIX FLAGS FIESTA TEXAS



FAST

SMOOTH

INNOVATIVE

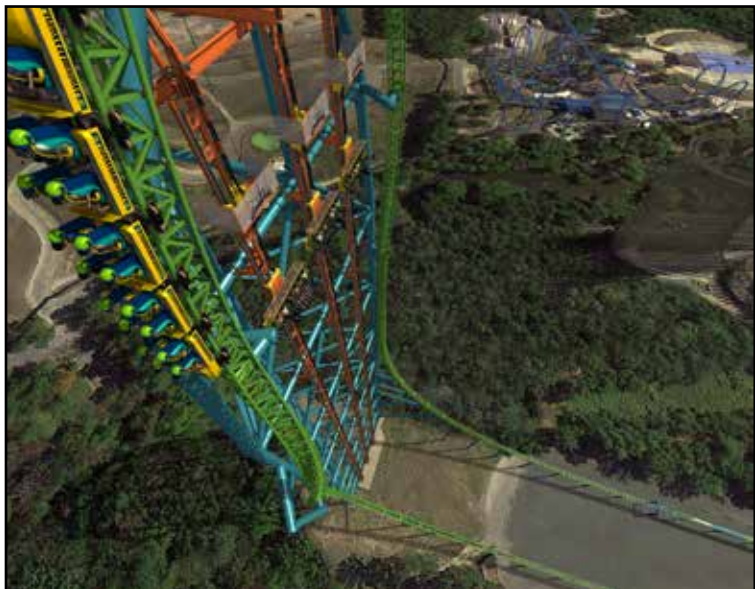


ROCKY MOUNTAIN CONSTRUCTION  
ADVANCED TRACK TECHNOLOGIES

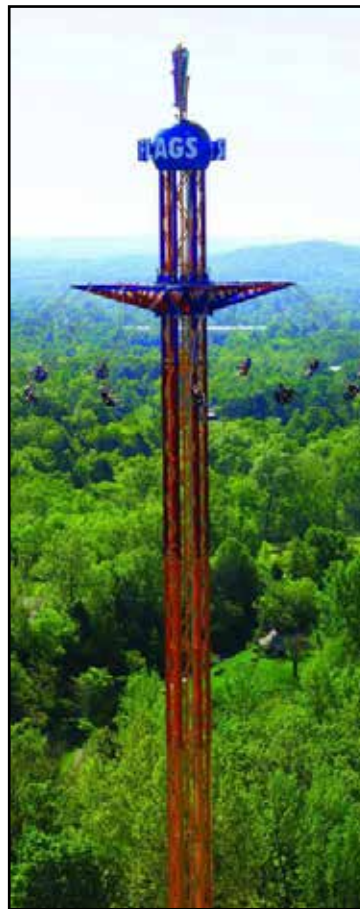
WWW.ROCKYMTNCONSTRUCTION.COM  
208.772.8181

EXCITING





Zumanjaro: Drop of Doom, Six Flags Great Adventure (Intamin)



SkyScreamer, Six Flags New England (Funtime)

## ►SIX FLAGS

Continued from page 14

are spun delivering maximum G-forces. In addition, the Six Flags Great Escape Lodge and Indoor Water Park is offering an all-new VIP wing with 35 upscale suites and exclusive concierge service. Supplier had not been announced at press time.

At both **Six Flags St. Louis** and **Six Flags Discovery Kingdom**, an interactive family ride is joining the parks' line up of thrills for 2014. Guests aboard Tsunami Soaker will have a soaking good time as they blast other riders with water while twisting and spinning in a circle. Each passenger is armed with a giant water pistol as they engage in a water battle that will leave everyone, including bystanders,

drenched in fun! These Twist 'n' Splash water rides are from Mack Rides.

In a bold move and for the first time in 16 years, guests at **Six Flags Discovery Kingdom** can now enjoy their favorite rides and attractions more often as the park expands its operating calendar to be open year-round for 2014, including holidays and weekends in both January and February. Already home to the best entertainment in Northern California, in addition to Tsunami Soaker, the park is also welcoming the return of the smash hit, Cirque Dreams Splashtastic — the Most Amazing Show Above H2O featuring high-flying aerialists and acrobats combined with the power and grace of spectacular bottlenose dolphins.

**Six Flags Fiesta Texas**, in

San Antonio, will debut the state's first multiple lane trap-door free-fall waterslides, the new thrilling four-slide Bahama Blaster. The extreme Bahama Blaster is just one of several new attractions and new guest amenities debuting next summer as part of an entirely new expansion inside the park's White Water Bay waterpark. This newest addition to White Water Bay features four body slides that sit side-by-side and offer a unique launching capsule system. After reaching the top of the six-story tower, guests step into the enclosed vertical capsule where the floor drops out beneath them, sending riders free-falling 40 mph down the slide. Supplier had not been determined at press time.

This fall at all Six Flags parks, Fright Fest is now big-

ger with more zombies, ghouls and haunted mazes than ever before. Later this year, family and friends can ring in the holidays at several parks with Holiday in the Park, a winter wonderland that includes all the familiar sights and sounds of the season along with Six Flags' signature collection of roller coasters, rides and attractions.

•[www.sixflags.com/2014news](http://www.sixflags.com/2014news)

## Six Flags re-opens New Texas Giant roller coaster

ARLINGTON, Texas — Six Flags Over Texas re-opened the New Texas Giant roller coaster on Sept. 14 following the addition of new safety measures for the ride including a modified restraint bar pad and the addition of seat belts.

Six Flags has completed the investigation of the recent accident involving the Texas Giant, with the ride's train manufacturer, internal engineers and external experts ruling out any mechanical failure of the ride. Due to litigation, the company is not releasing any further information about the outcome of the investigation.

"We are heartbroken and will forever feel the pain and sadness of this tragic accident. Our sincerest condolences go out to the family and friends of Ms. Esparza," said Steve Martindale, park president of Six Flags Over Texas. "The safety of our guests and employees is our company's absolute highest priority and we try to take every reasonable precaution to eliminate the risk of accidents."

The Texas Giant has undergone extensive testing and has received approval from the state of Texas, Department of Insurance, to resume operation.

"The Texas Giant is one of my favorite rides in the park," added Martindale. "My staff, family and I are pleased to be among the first riders to re-open the New Texas Giant for our guests."

Six Flags has successfully operated regional theme parks for 52 years and takes great pride in the quality of its safety record, ride maintenance and employee training, safely delivering approximately 200 million rides each year. According to data gathered by the International Association of Amusement Parks and Attractions, the industry safely provides approximately 1.7 billion rides annually in the United States and the likelihood of a person being seriously injured on a permanently-located amusement park ride is extremely remote.

## FOR SALE: Maurer Söhne Xtreme



2000 Portable/  
Park Model  
Excellent Condition  
Available Immediately  
**\$2,000,000**

For More Information, please contact:  
Sam Haynes | Dixie Landin' Theme Park  
(225) 931-6000



**BRAND NEW!**  
**MAXI DANCE PARTY 360°**

**104 FEET TALL**  
**24 OUTWARD FACING SEATS**  
**360 DEGREE SPIN**

**LED LITES**

**SEE IT IN ACTION!** YouTube <http://youtu.be/GOAOyJ6-BEQ>

**SBF VISA**

**MANY MAJOR MANUFACTURERS**  
*Available Under One Roof!*



**S&S - SANSEI**  
 TECHNOLOGIES INC



**RIDES 4U**



221 EVANS WAY, SUITE E • SOMERVILLE, NJ 08876  
 PHONE: (908) 526-8009 • FAX: (908) 526-4535 • WWW.RIDES4U.COM

## Gerstlauer coaster to open in 2014; resort hotel in 2015

# Dollywood officials announce \$300 million property investment

**STORY:** Pam Sherborne  
psherborne@amusementtoday.com

PIGEON FORGE, Tenn. — Dollywood officials announced in August a \$300 million, 10-year investment project to the Dollywood property, which will, among other components, include a new roller coaster to the theme park and an adjacent 300-room hotel.

All of the investment plan hasn't been set, but visitors to Dollywood over the next 10 years should expect to see additional entertainment attractions and resorts.

Dolly Parton said in an interview with *Amusement Today* after the official announcement that the resort hotel had been a dream of hers for a long time.

"I would go places and people would ask me 'Can I stay at Dollywood?'" Parton said, adding Pigeon Forge has plenty of great places to stay. "But, until now, it just wasn't the right time."

Now is the right time, she

said.

But, first things first. Scheduled to open in March 2014 is the new FireChaser Express, which will be the nation's first dual-launch family coaster that travels forward and backward. Germany-based Gerstlauer is manufacturing the new coaster.

This Gerstlauer coaster launches twice and features 2,427 feet of winding track. The coaster launches first from the loading station traveling from zero to 16 mph in just 1.1 seconds. As the ride ends, a backward launch from zero to 20 mph in two seconds sends the train back to the station traveling in the opposite direction.

The FireChaser Express features three, 14-passenger trains with an estimated hourly capacity of 750 riders. A 79-foot lift will propel the FireChaser Express through a "trick track" section where the passenger trains twist from side to side. Riders also will encounter two helices and six, zero gravity moments on a journey that lasts two minutes and 19 seconds.

The minimum height requirement is 39 inches, a fact that Dollywood officials hope will encourage families to ride together.

In information released by Dollywood, Parton said: "FireChaser Express is truly special to me because families can ride this coaster together. Most four-year-olds are tall enough to ride FireChaser Express so I'm excited that lots of families will take their first coaster ride together at Dollywood. I'm thrilled to offer folks a memory like this to cherish forever. That's a blast!"

And, of course, there is always a story behind the ride. The FireChaser Express at Dollywood will celebrate the volunteer-based fire departments of the 1940s that protected the neighboring Great Smoky Mountains National Park. Riders, who become recruits and set out to fight fires, will see fire towers, mountainsides and a destroyed "Crazy Charlie Cherriebaum's Gas & Fireworks Emporium" along the way. They will experience fallen telephone poles and other charred remnants that



Set to open in the summer of 2015 is the 300-room Dollywood's DreamMore Resort (above), which will include more than 8,000 square feet of indoor meeting space and state-of-the-art technology. At right, is the new-for-2014 FireChaser Express, a dual-launch family coaster from Gerstlauer. COURTESY DOLLYWOOD



litter the coaster's path.

They will be taken through the fireworks testing area where they encounter the mythical 'Big Bertha' skyrocket. As FireChaser Express races to extinguish the blaze, the coaster encounters a fireworks explosion, catapulting FireChaser Express into a backward launch sending the coaster on a reverse ride back into the station.

Set to open in the summer of 2015 to help mark the Dollywood Company's 30-year anniversary, the second component of the 10-year investment project will open. Dollywood's DreamMore Resort is now under construction on a 100-acre area adjacent to Dollywood's Splash Country and a short distance from the Dollywood theme park.

Dollywood President Craig Ross joined Parton for the *AT* interview. He said Dollywood has always been recognized as the friendliest park.

"That is unique to Dollywood," Ross said. "Now, they can play with us and stay with us."

Ross said visitors staying at the hotel will have free parking and free transportation to the amusement park.

"The property is within

walking distance of Splash Country," Ross said.

Dollywood's DreamMore Resort also will feature 8,000 square feet of indoor meeting space. Outdoors, the property can accommodate groups as large as 500. There will be a variety of accommodations to suit parties of all sizes. It will include special one- or two-bedroom reunion suites with family parlors that serve as a gathering hub. There will be a full-service restaurant and indoor and outdoor pools.

There also will be an amphitheater to offer outdoor entertainment and an event lawn to welcome craft demonstrations and special entertainment.

Other accommodations include fire pits, swings and hammocks, and story spots scattered throughout the grounds.

Parton says the goal is to celebrate the "iconic Southern gathering spot."

Other features include

an indoor and outdoor resort pool complex, a spa, and a full-service farmhouse-style restaurant.

Parton says the "crown jewel" of the resort will be the 2,200 square-foot "Dolly's Suite Dreams" celebrity suite, with décor she is helping to put together.

Parton, in fact, has much input into all of Dollywood. It is her vision that was built and what will be built.

She said the suite will be available to customers as long as "I'm not staying there."

The Dollywood Company projects that the park and its added hospitality investments will add \$150 million to the local economy annually.

More than \$7 million in state and local taxes are also expected to be generated by the project, as well as the addition of more than 2,500 jobs in the hospitality and construction industries.

The park currently has nearly 3,000 employees.

### FAST FACTS

#### Name/Location

Fire Chaser Express/  
Dollywood,  
Pigeon Forge, Tenn.

#### Type

Dual-launch coaster

#### Speed

Forward launch: zero to  
16 mph in 1.1 seconds;  
backward launch: zero to  
20 mph in 2 seconds;  
34.5 mph

#### Height/Track Length

79 feet/2,427 feet

#### Ride elements

Two helices; six  
zero-gravity moments;  
"trick track" section where  
train twists side to side

#### Ride duration

2 minutes, 19 seconds

#### Height requirement

39 inches

#### Capacity

Three, 14 passenger  
trains; 750 pph

#### Manufacturer

Gerstlauer Amusement Rides  
GmbH  
Muensterhausen, Germany

## Cedar Fair rolls out additional 2014 plans

# Cedar Point announces new rides, Hotel Breakers renovation

SANDUSKY, Ohio — Cedar Point announced several plans for the 2014 season, including introducing two new family rides, changes to the park's Camp Snoopy area and more details on a two-year renovation project to Hotel Breakers.

Joining Cedar Point's impressive lineup of rides next summer will be Pipe Scream — a Disk'O Coaster, and Lake Erie Eagles — a Flying Scooter ride.

Located along the Gemini Midway, Pipe Scream is billed as 'combining the best of a roller coaster and a flat ride in one.' Riders will spin and coast over 302 feet of track, reaching a maximum height of 43 feet above the midway and a top speed of 43 mph. Pipe Scream is manufactured by Zamperla, Parsippany, N.J.

Across from Pipe Scream, Lake Erie Eagles will also soar onto the Gemini Midway and will treat a new generation of Cedar Point's guests to a classic thrill ride. Riders on Lake Erie Eagles will sit in one of eight ride vehicles that are suspended from arms located more than 28 feet above the ground. As the ride begins its cycle, the carriages will swing outward simulating the sensation of flight. A forward rudder will allow guests to alter their flight experience from mild to wild. Lake Erie Eagles is manufactured by Larson

### ► Additional Cedar Fair news...Page 20

International, Inc., Plainview, Texas.

In addition to the Gemini Midway improvements, Camp Snoopy, celebrating 15 years of family fun at Cedar Point, will also see enhancements. The kid-friendly Frog Hopper ride will be relocated to Camp Snoopy and re-themed as Woodstock's Airmail while the Jr. Gemini roller coaster will be renamed Wilderness Run and its entrance will be moved into Camp Snoopy. These two popular rides will join other family favorites such as the Tilt-A-Whirl, Lolli Swing and Camp Bus and will bring Camp Snoopy's ride count up to an impressive nine rides, many of which parents can ride side-by-side with their children.

"We are excited about these new additions to the park," said Jason McClure, incoming vice president and general manager of Cedar Point. "Following the successful introduction of GateKeeper, we believe these new rides and upgrades will continue to make Cedar Point the perfect vacation destination for families of all ages."

The beginning of a two-year Hotel Breakers renovation project will also commence this winter. Phase one



Cedar Point's plans for the upcoming 2014 season, include introducing two new family rides that will be placed on the Gemini Midway: Pipe Scream, a Disk'O Coaster from Zamperla (below left), and Lake Erie Eagles, a Flying Scooter (below right) supplied by Larson International, Inc. COURTESY CEDAR POINT



will include upgrading a portion of the exterior of Hotel Breakers, while phase two will take place over the 2014-2015

winter season and will feature upgrades to both the exterior and interior of the hotel. The popular family vacation des-

ination boasts more than 500 rooms, many of which provide sweeping views of the Cedar Point Beach.

## Canada's Wonderland plans 4-D attraction

### Canadian-based Triotech to supply new interactive dark ride

VAUGHN, Ontario — Guests visiting Canada's Wonderland next spring will find that a mysterious dragon, the Guardian, has taken up residence in the park's landmark Wonder Mountain. Although details of the attraction's actual nature are still filtering in, park officials have confirmed that it will be an interactive 4-D dark ride with steel roller coaster elements.

"We felt the timing was right to enter the massive caverns of Wonder Mountain and provide our guests with a new dimension of thrills," said Norm Pirtovshek, general manager, Canada's Wonderland. "Thrill seekers from all generations will be amazed by the combination of unique ride thrills



and immersive 4-D interactive action as they compete for ride supremacy."

Wonder Mountain's Guardian begins with a steep climb up the side of Wonder Mountain then plummets into its interior traveling through five different layers of this dimensional world. Riders will encounter mythical creatures as they navigate 1,000 feet of roller coaster track through a desolate forest, underground lake and Draconian City. The quest culminates as riders enter the dragon's lair for the ultimate

battle with a finale that promises to 'shock thrill seekers of all ages.'

Montreal-based Triotech, a leading manufacturer of multi-sensory attractions for the amusement industry, has developed the ground-breaking technology for Wonder Mountain's Guardian. This next generation ride will allow guests to experience stunning 3-D effects overlaid with 4-D elements: simulating wind, movement and more. Real-time graphics along with a fast and accurate targeting system will be installed to create an ultra-immersive interactive experience.

"This new ride at Canada's Wonderland will be a one-of-a-kind, never seen before attraction," said Ernest Yale, president and CEO of Triotech. "It will bring the best elements of the physical, virtual and multi-sensory world. All this combined in a fully immersive and interactive experience."



Subscribe today to receive  
14 issues of  
Amusement Today  
per year!  
(817) 460-7220

## Knott's Mondial tower swing ride heading to Worlds of Fun in 2014

KANSAS CITY, Mo. — Officials at Worlds of Fun recently confirmed that a tower swing ride supplied by Mondial will be joining the park's ride line-up in 2014.

Originally known as Windseeker when it debuted at sister park Knott's Berry Farm in mid-2011, the attraction will be disassembled, trucked across the country and re-branded as SteelHawk for its rebirth in Missouri next spring.

To be located in the Americana section of the park across from Patriot, SteelHawk will be themed after the majestic birds-of-prey that hunt the prairies of the Midwest. Standing approximately 100 feet taller than Rip Cord, Mamba and Detonator, riders will experience a sense of exhilaration that mimics the feeling of free flight. SteelHawk will feature 32 two-seat swings that provide gravity-defying thrills as riders' feet dangle at a height of 301 feet in the air. As the apex of its flight, when the great bird spreads its steel wings at a 45-degree angle, they will experience a speed of eight rotations per minute during their 60-second flight and stunning views across Kansas City. Families can experience the thrill of SteelHawk together, and with its unique LED light display mounted on the arms, the ride should prove to be an outstanding nighttime spectacle.

"After combining Worlds of Fun and Oceans of Fun in 2013, we wanted to come back immediately with a major new ride for our guests. SteelHawk takes riders higher than any other ride currently at Worlds of Fun. SteelHawk will be a spectacular showpiece that will be seen for miles," says Frank Wilburn, vice president/general manager.

SteelHawk will make its debut in the spring of 2014 at Worlds of Fun.

## Kings Dominion to celebrate 40th

DOSWELL, Va. — Kings Dominion turns back the clock as the park announces plans for a celebration four decades in the making. This once-in-a-lifetime event will include many surprises, the return of classic park icons and a chance to create new traditions and memories. The celebration will begin next season to commemorate the opening of Kings Dominion and Lion Country Safari.

"As a native Richmond resident, I grew up not only visiting Kings Dominion, but also started my career here as a seasonal associate," said Pat Jones, Kings Dominion's vice president and general manager. "I have 40 years of fond memories and I am thrilled to share some of these exciting moments with our guests during our special 40th Celebration."

The central piece of the 40th Celebration will be the introduction of "Ruby," a custom painted 40th Celebration horse. "Ruby" will be added to the park's historic Carousel, which dates back to 1917. The Carousel has operated at Kings Dominion since the park opened



in 1975.

Those who grew up with Kings Dominion will also notice the return of many original park icons next season, including:

- The homecoming of the park's classic blue ice cream, which was a hit with families for decades.

- A complete restoration of the iconic International Street fountain, which will include a new LED lighting package and additional refurbishments.

- Reintroduction of one of the park's original classic midways, Candy Apple Grove. This re-themed area will include new ride lighting packages, return of the classic oversized candy apples along the midway and other surprises.

- The return of Safari Village (formerly the Congo area of the park) and will include

exciting improvements to Volcano: The Blast Coaster and Anaconda.

In the coming months, Kings Dominion will also make many more exciting announcements as part of this thrilling celebration. Guests are invited to follow the progress on Facebook ([www.facebook.com/kingsdominionva](http://www.facebook.com/kingsdominionva)) and on Twitter ([www.twitter.com/kingsdominionva](http://www.twitter.com/kingsdominionva)) to be the first to hear about the latest news. Guests can share memories of Kings Dominion and be a part of the celebration by posting their pictures and stories on Twitter using the hashtag #KD40.

Kings Dominion will open for its 40th season on Saturday, April 5, 2014. Guests can begin to reminisce and re-create 40 years of magic at Kings Dominion during the off-season by visiting [www.kingsdominion.com/celebration](http://www.kingsdominion.com/celebration). The park's 40th Celebration website will include historical facts, photos and videos, along with interviews with former general managers and other park associates and the latest announcements.



# CPI Amusement Bumper Collars Air-Retention Bladder System



8 Person Boat



12 Person Boat



Air Valve/D Rings

CPI AMUSMENT BUMPER COLLARS



AP - 8T



AP - 12T



OD # 3

AIR-RETENTION BLADDER SYSTEM



PO Box 2040 Kyle, Texas 78640  
Phone: 512-295-2683 • Fax: 512-295-2245

e-mail: [info@cpiamusement.com](mailto:info@cpiamusement.com)  
web site: [www.cpiamusement.com](http://www.cpiamusement.com)



# WATERPARKS & RESORTS

INDOOR FACILITIES AQUATIC CENTERS RECREATION SUPPLIERS

## Brazil's popular Beach Park launches Arrepius slide tower

*ProSlide delivers five slides to park*

AQUIRAZ, Brazil — In July, Beach Park debuted Arrepius, a new collection of water slides that features the first and only Skybox in Brazil with five different descents. The highlight of Arrepius is the Skybox, a transparent capsule situated 25 meters above the park, whose descent begins when the floor of the capsule drops open with the press of a button. Arrepius is the latest addition to the Beach Park complex, one of Brazil's top waterparks; its construction completes a series of investments by Beach Park to expand its offerings for the nearly one million visitors who travel to Beach Park annually.

"We have invested \$95 million Brazilian reais (U.S. \$42 million) to create Arrepius, and we expect that this will result in a 20 percent visitor increase to Beach Park in the coming year," said Beach Park General Manager Murilo Pascoal. "In a study from Delta Consultoria e Pesquisa, seven out of every 10 tourists said that Beach Park was the biggest influence in their



**Above left, all three body slides include a Skybox that guests enter before having the floor drop out from underneath them. Above right, the five new attractions from ProSlide are clearly visible in this bird's-eye-view from the top of the Arrepius Tower complex. COURTESY PROSLIDE**

decision to visit the state, so we are very pleased that our investment will help increase the number of visitors to Ceará as well."

The vision for Arrepius was conceived by the ProSlide of British Columbia, Canada. The execution for Arrepius

was lead by Beach Park's Engenheiros Sonhadores (Dream Engineers), the team responsible for designing Beach Park's other popular attractions.

Arrepius offers a variety of descents with the ability to accommodate up to nine peo-

ple simultaneously — three on body slides and up to six on the inline tube slides.

Two of the three body slides are mirrored Super-Loops, which begin with an 80-degree descent curving right, then left (or vice versa). The third body slide features

a single speed decent from 25 meters high.

The fourth and fifth new-for-2013 attractions are a TantrumAlley inline tube slide that features two funnels leading to a pool below and a CannonBowl.

— Jeffrey Seifert

## ShadowQuest to debut at seven Great Wolf Lodge Resorts

*Live action game challenges players to save the world's light using magical wands*

MADISON, Wis. — For the past several years, guests at Great Wolf Lodge have become Master Magi as they played the unique, live action, interactive gaming adventure, MagiQuest. Now, a new experience is coming to the family entertainment resorts that takes players on quests through new worlds and offers fun for everyone with the wave of a wand. ShadowQuest, the latest game from Creative Kingdoms, LLC, creators of MagiQuest, chal-



► **See Related Story**  
**Page 39**

lenges players to embark on a journey to save the light.

ShadowQuest debuted at Great Wolf Lodge in Wisconsin Dells, Wisconsin on August 23, followed by installation at six additional Great Wolf Lodges this fall. The resorts

in Mason, Ohio; Grapevine, Texas; Grand Mound, Washington; Pocono Mountains, Pennsylvania; Williamsburg, Virginia; and Concord, North Carolina will soon challenge players of all ages.

ShadowQuest is a completely new adventure and game. Utilizing the same wand technology of its sister game, MagiQuest, ShadowQuest takes players through the resort in search of crystals, artifacts and magical places. They can also summon Lumina, leader of the light pixies to help choose which quest to embark on.

ShadowQuest features ten quests, a "Vanishing Light" adventure and for those who

successfully accomplish each step, a final battle against the evil yeti Malaki. The game, with its fantastical theme and rich, digital environments will blend into the Great Wolf Lodge resorts alongside the MagiQuest stations. Players can start and stop the game at any time; each wand stores every feat and battle played for easy pick up on a future visit. The same wand also stores players' MagiQuest games and accomplishments.

"We are so excited to debut ShadowQuest at our resorts," said Kim Schaefer, chief executive officer, Great Wolf Resorts, "We have wanted to bring a new experience to families who already love

MagiQuest, as well as add something to engage kids who haven't yet played the game. With the wave of a wand—literally—the entire family can take an adventure together."

Players will select from a variety of quests and adventures that result in a collection of special powers. As these powers increase, players proceed to higher levels of the game where the level of difficulty also increases. ShadowQuest is not confined to a computer screen. It places players inside a three-dimensional, interactive fantasy world where they must follow clues that lead deeper into a mythical realm populated by an array of characters and creatures.

# Paradise Island Waterpark opens inside world's largest building

*WhiteWater, Prime Play deliver indoor thrills*

**STORY:** Jeffrey L. Seifert  
jseifert@amusementtoday.com

CHENGDU, China — The global battle to be recognized as an architectural tour-de-force has moved from the United Arab Emirates to China. The New Century Global Center has seized the bragging rights as the world's largest building.

In stark contrast to the skyscrapers of Dubai, this massive building is a mere 100 meters tall, but at 500 meters in length and 400 meters in width, the wavy-roofed, glass-covered building encompasses 1.6 million square

meters (395 acres), making it the largest freestanding building in the world. To put that in perspective — it can hold nearly five and one-half AT&T Stadiums, home of the Dallas Cowboys in Arlington, Texas.

The Global Center, which opened June 28, is home to business offices, two five-star hotels, a 14-screen movie cinema including an IMAX theater, ice rink, shopping malls, a faux Mediterranean village and family-themed attractions. In the center of it all is the Paradise Island Waterpark, themed as a seaside town with a 1,312-foot sandy beach, the world's largest wave pool and a giant 492-foot by 131-foot LED screen

that displays an ocean horizon complete with sunrises and sunsets at the appropriate times of the day.

The glass-domed waterpark is able to accommodate up to 6,000 visitors at a time partaking in various activities such as sunbathing, floating in the wavepool, sipping cocktails, dining on seafood or enjoying the multiple waterslides provided by WhiteWater West of British Columbia, Canada. The 100 meter high glass ceiling comes with its own artificial sun which will keep visitors warm 24 hours a day

Exciting slides are the main draw to any waterpark, and WhiteWater provided an array of innovative attrac-



**At 1.6 million square meters (395 acres) The New Century Global Center in Chengdu, China has bragging rights as the world's largest freestanding building in the world. It houses the Paradise Island Waterpark under the massive glass dome in the center of the building.**

COURTESY EXHIBITION & TRAVEL GROUP CHINA

tions to appeal to guests of all ages. For the children, an

elaborately-themed Aqua-Play structure offers splashy fun. A WhiteWater Abyss family raft ride, can be enjoyed by parents with their children. The more daring adventurers will want take on attractions such as the Aqua-Loop looping waterslide, or race each other on the multi-lane Whizzard racing slide. A double FlowRider allows guests to experience the thrill of surfing in a safe, indoor environment.

Prime Play, a subsidiary of WhiteWater, provided a Sky Trail Ropes Course within the waterpark — a first for China. Featuring three levels and eight poles, netting, suspended steps and more, the course can accommodate 150 guests per hour.

"We are very honored and pleased to be part of this project, another world first for WhiteWater," commented WhiteWater president and CEO, Geoff Chutter.

The New Century Global Center sits directly opposite the Chengdu Contemporary Arts Centre, at the heart of a booming area of Chengdu. The city's subway lines have been expanded into the new area and the city plans to build a new airport by 2020 to attract visitors from all over the World.

Chengdu, founded over 2,000 years ago, is the capital of the Sichuan province in Southwest China and one of the most important economic, transportation, and communication centers in Western China.



**Above left, the elaborately-themed Aqua-Play structure offers plenty of ways for kids to splash around. Above right, this Prime Play Ropes Course and climbing structure features three levels. The Ropes Course within a waterpark is a first for China. COURTESY WHITEWATER**



**Above left, seen here underneath the massive glass dome is the Whizzard racing slide, Abyss, ropes course. One of the two, 5-star hotels is in the background. Above right, a double Flowrider allows guests to surf hundreds of miles from the nearest Ocean. COURTESY WHITEWATER**

# Redefining Family Adventure



Another **ORIGINAL** WhiteWater Innovation

## AquaCourse™

An Exhilarating Aquatic Course of Ropes, Towers and Bridges  
Get Inspired at [www.AquaCourse.com](http://www.AquaCourse.com)



**WHITEWATER**  
The **ORIGINAL** Waterpark & Attractions Company



**WHEN THE WHOLE IS EVEN GREATER  
THAN THE SUM OF ITS PARTS.**

**See us at WWA #301-406 & IAAPA #5142**





Dawwama, Yas Waterworld, UAE

Hybrid rides – a ProSlide invention – combine two, three & more iconic rides into a single ride path. They integrate unique combinations of TORNADO funnel rides, bowls, wave-walls & LIM water coasters. And create massive differentiation.

Case in point – Yas Waterworld's **Dawwama**, the world's newest, best water ride. Immediately voted #1 ride by park guests, it combines two IAAPA Impact Award-winning technologies into one. The ProSlide HydroMAGNETIC MAMMOTH water coaster plus the world's first six-person TORNADO 60. Unimaginable thrills & impact.

19 ProSlide hybrid rides installed since 2008.  
Learn more at [www.proslide.com](http://www.proslide.com).

**60 AWARDS IN 20+ YEARS**

 **PROSLIDE**  
TECHNOLOGY INC



## NEWS SPLASH

COMPILED: Jeffrey L. Seifert, jseifert@amusementtoday.com

**Universal Studios Orlando** has purchased 52 acres of land including all of the land under **Wet 'n Wild** Orlando waterpark plus several neighboring parcels of vacant and warehouse land. Universal owns Wet 'n Wild but had previously been leasing the land from the Southwest Land Co. of Newport Beach, California. All eight parcels of land were purchased from Southwest. Comcast Corp. which recently acquired the remaining 49 percent stake in Universal, has laid out an aggressive growth strategy for the park, hoping to make it a true multi-day resort. Wet 'n Wild is historically significant as it is generally considered the first waterpark, having opened in March 1977. The park was a project of **George Millay**, who was given the first lifetime achievement award in 1994 by the **World Waterpark Association**.

**Wild Waves Waterpark** in Federal Way, Washington, was unable to handle the crowds generated by a "perfect storm" of reduced admission, record-breaking heat and local schools just recently starting their summer break. As June is typically a slow month, Wild Waves offers a discounted admission of \$14.99, but with the last day of the promotion falling on a Sunday with unusually hot weather and no school the following day, the waterpark had more guests than it could handle. In anticipation of the heavy crowds, employees parked their cars at a nearby high school in order to free up more spaces, but the parking lot filled early in the day, forcing many visitors to seek parking on public streets in nearby neighborhoods. The traffic caused problems in those neighborhoods and for nearby businesses. Some reported getting stuck in traffic just trying to get to a Costco in the vicinity. "What is usually a 10-minute drive turned into an hour. I have lived in Federal Way for many years and I have never seen it cause this big of a problem before," wrote Kara Kelihir in a Facebook posting. Wild Waves apologized to the residence owners and businesses affected and tried to assure them that such crowds were unlikely to occur again.

As guests at the **Morey's Piers** waterparks in Wildwood, New Jersey, splash around in the slides and pools, few probably think about the quality of the water they are swimming in. But, behind the scenes, Morey's Piers uses 11 different computer systems to monitor the chlorine and PH levels and automatically make adjustments if needed. A member of the staff also manually checks the water every two hours, and once a week an independent third party microbiological firm tests the water. While most of these checks probably go unnoticed by the guests, they are not unappreciated. A fun day at a waterpark can turn bad if proper attention is not given to the quality of the water.

**Wilderness at the Smokies** in Sevierville, Tennessee, has teamed up with **Action Bracelet** in Knoxville to provide guests with on-slide photos of their visit to the waterpark. Guests can purchase an Action Bracelet for \$17.99, then activate the bracelet using a smart phone. Guests then locate photo opp scanners at the beginning of the designated slides, and scan their bracelet. During the ride a camera within the attraction will then take their photo and send it to their smart phone within seconds. The photos can be shared with family and friends via social media websites. The \$17.99 price

is all-inclusive — guests can take as many photos as they want and they never have to wait in line at the end of the ride. Other than handling sales of the bracelet itself, Action Bracelet requires no other staffing. The waterproof bracelet makes it possible for waterparks to offer onboard photos much like amusement parks. The system is not limited to waterparks however, and can be used on any attraction where guests might want photos. The system has several advantages over the typical photo-capturing systems in use at theme parks.

**WhiteWater West** has established a new e-store allowing customers to quickly and easily order spare and replacement parts for their WhiteWater products online.

The e-store makes it easy to find and order factory-authorized spare and replacement parts such as nets, hose jets, platforms, hand wheels, water guns etc., for WhiteWater's AquaPlay and SCS interactive play structures. Parts including shock absorbers, springs, etc. are available for WhiteWater's waterslides including the AquaLoop.

Customers can pre-pay with Visa, MasterCard or they can upload a purchase order for billing purposes. Once placed, the order will be processed promptly, securely and efficiently.

After school resumed, **Volente Beach Waterpark** on Lake Travis in Austin, Texas, extended its Adult Night dates to select Saturday and Sunday evenings during August and September. With the waterpark open from 7:30 p.m. to 1:30 a.m. guests 18 and over had the chance to enjoy the park's waterslides, food and drinks without having to worry about what the kids would think. A live concert stage, sandy beach on Lake Travis and a swim-up Tiki bar proved to be the real hotspots. Tickets for the evening were only \$12 per person. The annual adult night has become a tradition for lake-lovers and escapists from Austin and the surrounding communities.

After almost two years of proposals and changes, the **Pooler City Council**, approved an infrastructure site plan for a waterpark planned for **Pooler Towne Center** near Savannah, Georgia. Plans for the \$7 million park include a lazy river, waterslides, spray deck, beach areas, surf machine and a pool for small children. The project is the newest attraction to join the Pooler Towne Center entertainment complex, which includes an IMAX movie theater, a roller skating rink, and a bowling alley. The waterpark is expected to open in 2014.

The grand opening of a new splash park at **Palmer Park** in Detroit, Michigan, had to be delayed due to lack of the one thing a splash park needs most — water. A water main break prevented city officials from filling the pools and retention ponds. "We have a water system that's 100 years old, so these things happen," Detroit Mayor **Dave Bing** told a TV station. So as not to disappoint the children, the Detroit Fire Department arrived and used their hoses to mist the children until the water main could be repaired. The waterpark was eventually able to begin normal operations a couple of hours after the ribbon cutting ceremony.

**Great Wolf Lodge** has announced its second class of recipients for the Great Wolf Resorts Scholarship. A total of \$56,000 will be awarded to

14 Great Wolf Lodge Pack Members to put toward their college education for the upcoming 2013-2014 school year.

The entire company is proud of the 135 applicants and 14 recipients of this year's scholarship. A great Howl of congratulations is extended to all the Pack Members as they pursue their higher education goals this fall.

Each September, Great World Lodge holds a fundraising golf tournament in support of the Scholarship Program. The inspiration to create the program originated from the company's participation in the CBS prime-time show "Undercover Boss" three years ago. During her time on the show, Kimberly Schaefer, CEO of Great Wolf Lodge, met pack members at each resort who were working for Great Wolf Lodge while attending college.

An act of vandalism at the **Putnam Water Park** in Winfield, W. Va., resulted in a citation from the Department of Environmental Protection. Someone broke into the park and turned a valve that emptied the water slide pool into a nearby pond stocked with fish. The sudden influx of chlorine resulted in a massive fish kill in the pond. The pool, which needs to stay filled to prevent cracking and heaving during the winter months, will cost \$5,000 to refill. The police have no suspects but since the valve requires a key, like for a water meter, they believe it was likely someone familiar with the park's equipment — perhaps a disgruntled employee.

One of Canada's largest waterparks, **Wild Water Kingdom** in Brampton, Ontario, closed on what would have been a busy August Sunday, following a pre-dawn robbery. Shortly after a special event that started the night before was winding down, four or five male suspects — three armed with guns — entered an office area where cash was being counted and prepared for deposit. Five employees had their hands bound as the suspects collected and ran off with an undisclosed amount of money. The robbery took place around 5:15 a.m. — an hour after the event had ended and police and security services had left. None of the employees were injured in the incident, but the park was closed all day to allow the police to investigate. A few weeks later the police had made several arrests but would not release any further details.

Although **Cowabunga Bay** still has plans to open next April, General Manager **Shane Huish** did confirm that the 23-acre site was sold for \$2.3 million to **Tom Welch** of Utah. According to Clark County records, Huish's development group originally acquired the property for \$4.6 million. It is unclear if Huish will continue to manage the park or continue in some other capacity.

Tom Welch was president of the Salt Lake Organizing Committee and was responsible for bringing the XIX Olympic Winter Games to Salt Lake City in 2002. Welch will take over the project to build the \$23 million waterpark.

The park was originally expected to open in 2013 but work crews had to contend with deposits of caliche just below the surface and delays importing custom-made slides from Turkey.

Huish stated, "We're still bringing a waterpark to Henderson."

Henderson is located just outside Las Vegas, Nev.

# A Fusion of Thrilling Sensations



Another **ORIGINAL** WhiteWater Innovation

## Boomerango™ + Manta™

Now Open at Nagashima Resort, Japan  
Get Inspired at [www.ThrillingFusions.com](http://www.ThrillingFusions.com)



**WHITEWATER**  
The **ORIGINAL** Waterpark & Attractions Company

# Polin-supplied waterpark opens in Macedonia's Capital



The childrens' play area includes a pirate-themed waterplay structure with tipping bucket, mushroom fountains, and a number of small animal-themed slides. COURTESY POLIN

SKOPJE, Macedonia — The new government-funded Boris Trajkovski Aqua Park in Skopje, Macedonia, celebrated its opening with a special ceremony on July 21, 2013. Home to about one third of the Balkan country's population, Skopje is the largest city

in Macedonia, as well as its capital.

The €4.2 million (U.S. \$5.5 million) project, part of the city's "Skopje 2014" development, is named after former President Boris Trajkovski who was killed in a 2004 plane crash on his way to an economic summit.

In addition to the Aqua Park, the Skopje 2014 project includes the construction of museums and government buildings, as well as the erection of monuments depicting historical figures. Around 20 buildings and over 40 monuments are planned to be constructed as part of the project.

Ratko Kapusevski, Boris Trajkovski Aqua Park's director, said that they "expect this new aqua park will allow our area to provide guests with even more reasons to visit our remarkable city."

Prime Minister Nikola Gruevski, who attended the groundbreaking ceremony in January, was joined by Skopje's Mayor Koce Trajanovski at the opening ceremonies for the city's first aqua park.

The waterpark was built by Polin Waterparks & Pool Systems of Turkey and representatives from Polin also attended the ceremony, including President Dr. Baris Pakis and Head of Sales and Design, Dr. Kubilay Alpdogan.

"Polin is honored to supply our rides for this project. The government was committed turning this dream into reality," Mr. Baris Pakis said Sunday, citing the fact that it is the first aqua park in the city. "It was an absolute pleasure to work in Macedonia, and we look forward to partnerships in the future."

Skopje's climate lends itself well to the attractions of a waterpark. Most rainfall in Skopje occurs from April to June and October to December. Summers are long, hot, and humid with average temperatures of 31 degrees C (88 degrees F), though high temperatures sometimes reach 40 degrees C (104 degrees F).

Construction for the waterpark began in March, and despite taking place during the rainy season, the park was open in time for summer. Ka-

► See POLIN, page 30



WWA Booth #529-630

**Polin**<sup>®</sup>  
WATERPARKS & POOL SYSTEMS

**HIGHLIGHTS 2013**

[www.polin.com.tr](http://www.polin.com.tr)



MSC Preziosa Cruise



Terme Olimia, Podcetrtek - SLOVENIA

[/polinwaterparks](https://www.facebook.com/polinwaterparks)



Chimelong Waterpark, Guangzhou - CHINA



Aquafantasy, Izmir - TURKEY



Odessa Waterpark - UKRAINE



Santorini Water Fantasy, Cha-am - THAILAND



Watercube, Tianjin - CHINA



Aquafantasy, Izmir - TURKEY



Crystal Sun Set, Antalya - TURKEY



Orbita Waterpark, Koblevo - UKRAINE



Oka Gemchugina Waterpark - RUSSIA



**PADDING**

ALL TYPES OF SLIDE & POOL SIDE PADDING



PADDING FOR ANY LOCATION



**WATER TRAMPOLINES**



**TUBES**



**FLOATATION COLLARS**

+1(513) 829-5533  
 FAX +1(513) 892-7466  
 ZEBEC@ZEBEC.COM  
 WWW.ZEBEC.COM



**INLINE RAFTS**



**UPHILL RAFTS**



**ROUND RAFTS**



**RAFTS**



**SIDEWINDER BUMPER**



**SIDEWINDER TUBES**



Heavy-Duty Single, Double, Tear-Drop, 3 and 4 Person Clover Tubes made in USA with extra heavy material and overlapped, heat-welded seams

**HEAVY DUTY TUBES**



Diamond Raft



**BUMPER BOAT TUBES**



**INFLATABLE BARRIERS**



HT Heavy Triple Tube



**RAPID RIVER RAFT**



**FOAM MATS**



**SNOW TUBES & RAFTS**

**LILY PAD WALK**



**COMPLETE LILY PAD WALK SETUP**

- FOAM Lily Floats
- Overhead Netting
- Entry Pool Side Padding



**PLAY NETTING**



**ROPE & NETTING**



**►POLIN**  
Continued from page 28

pusevski says the waterpark “will be Skopje’s main summer attraction,” while providing “a direct impact on local tourism efforts and on the Karpos municipality’s economy.” The park also has 35 life-

**A Turbulance and body slides are among the key attractions at Macedonia’s newest waterpark.**  
COURTESY POLIN

guards and created at least 40 new jobs.

Using its new office in Macedonia, Polin worked with local Macedonian construction and electrical companies, Zikol and Elektrounion, to build the facility. It includes 10 waterslides, a children’s pool, a wave pool, a leisure river, an administrative building, a restaurant and bar, bathrooms, dressing rooms, and a first-aid station.

Some of the major attractions at the new park includes:

- A Multisurf waterslide with head-first mat racing.
- A Turbulance with Flying Boats, an extreme slide with a water-propelled uphill ride followed by steep drops that end in a splash pool.
- A Space Boat, which combines the elements of Polin’s Space Hole with its Black Hole attraction.
- A Body Slide that propels riders along a slide of both drops and straight-aways at different speeds.
- An Aquatube, a fast ride that can include both visual and auditory special effects.
- A kids area with a rabbit slide, giraffe shower, mushroom fountain, mini octopus slide and a pirate-themed multi-level water-play structure with slides, tipping buckets, water cannons and net climbs.

—Jeffrey L. Seifert



Your success is our success.  
Let’s celebrate together.



When waterpark owners discover what they’ve been missing, they’re happy to have the full protection of the World Waterpark Association Insurance Program, the only one developed specifically for WWA members. With better coverage at low rates and no deductibles, it’s reason to celebrate. For a free policy comparison, call Tim O’Donnell at 913-676-9217.

**NO DEDUCTIBLE. LOW RATES. BETTER COVERAGE.**



HWINS.COM/WATERPARKS

Independent agent representing ACE Group Programs Division. Most insurance products are underwritten by insurers within the ACE Group of Insurance Companies.



**Cedar Fair sells Palm Springs waterpark to CNL**

SANDUSKY, Ohio — Cedar Fair Entertainment Company, announced that it has sold Knott’s Soak City — Palm Springs, a stand alone waterpark in Southern California, to CNL Lifestyle Properties, Inc. (CNL). Terms of the agreement were not disclosed and are not material to Cedar Fair’s results of operations. The sale of the Palm Springs waterpark has no impact on the company’s other properties located in California.

CNL will retain the rights to the Knott’s Soak City Palm Springs name through the end of 2013 and no impact to customers is expected during this transition. The park will continue its regular operating schedule and all season passes sold will be recognized through the park’s 2013 operating season currently scheduled to close on Sunday, October 6, 2013.

The company noted that the net proceeds from this sale will be re-invested in their core assets including the multi-year refreshment of hotel properties in Sandusky, Ohio which was announced last year.



# BUSINESS

REVENUE

PEOPLE

SAFETY

SUPPLIERS

## SeaWorld Entertainment reduces hours for part-time employees

ORLANDO, Fla. — According to published reports, Orlando-based SeaWorld Entertainment Inc. has confirmed that it was reducing hours for part-time employees. By doing this, SeaWorld Entertainment would no longer be required to provide health care insurance under the U.S. Government's policy.

SeaWorld Entertainment Inc. operates 11 theme parks in the United States. Approximately 18,000 of the company's total workforce of 22,000 are considered part-time employees.

As part of the new policy, which is expected to go into effect next month, SeaWorld part-time employees will not work more than 28 hours each week. Previously, they could be scheduled to work up to 32

hours per week. The affected employees would no longer be classified as full-time under the Affordable Care Act, which was signed into law in 2010 by President Barack Obama.

In a recent written statement published by the Orlando Sentinel, SeaWorld said the change "is intended to bring consistency to the part-time designation across the SeaWorld Parks system."

In the article, a spokesman for Universal Orlando, which is owned by Comcast Corp., said it has not reduced hours for part-time workers and has no plans to do so. A spokesman for Walt Disney World, where many part-time employees are unionized, said it is still evaluating matters and working with its labor groups.

### IAAPA releases helpful information for members on new ACA

WASHINGTON, D.C. — The Affordable Care Act (ACA) is exceptionally complicated and comprehensive. It contains hundreds of provisions which will impact virtually every business, person, and health care entity in the nation.

Some of the sections of the law require action by federal and state agencies before they can be put into effect. Others are subject to widely varying interpretations and must be clarified by administrative action. Accordingly, implementation of this massive statute requires the issuance of hundreds of regulations, guidances, policy statements, rulings, and other regulations from numerous federal agencies including the Department of Health and Human Services, the Centers for Medicare and Medicaid Services, the Department of Labor, the Treasury Department, and the Internal Revenue Service. In addition, state governments will be required to promulgate far-ranging rules to implement portions of the law for which they are responsible.

The regulations implementing the ACA are lengthy and complex and in many cases are cross-referenced to, and correlate with, other regulations issued by HHS, Treasury, and Labor. Members are advised to seek expert assistance in assessing their duties under the ACA.

IAAPA's Government Relations staff has created a "white paper" on the employer responsibility provisions.

If you are a member of IAAPA, visit [www.iaapa.org](http://www.iaapa.org), then click on 'Resources' and then look for "White Papers."

## Safety seminars announced

### PACE Seminar set for October

GREENSBURG, Pa. — The 2013 Parks and Carnivals Educational (PACE) amusement rides safety seminar is scheduled for October 28 - 31 at Greensburg, Pa. and will feature hands on training at Idlewild Amusement Park.

The PACE Seminar is presented by the National Association of Amusement Rides Safety Officials (NAARSO) and is jointly sponsored by the Pennsylvania State Showmen's Association (PSSA) and the Pennsylvania Amusement Parks Association (PAPA) and is the original Pennsylvania Ride Safety Seminar.

Attendees may select either 24 hours or 32 hours of certification.

The Educational portion of the seminar is led by instructors from NAARSO or other NAARSO approved industry experts.

Inspector Testing will also be of-



ferred for the Pennsylvania Certified Inspectors and/or NAARSO Levels.

All indoor classes will be held at the Ramada Inn and Conference Center in Greensburg.

For more information call Hersheypark's Gary Chubb at (717) 534-3101 or (717) 649-1131.

### 2014 ROTC School returns to Vegas

LAS VEGAS, Nev. — The team of When Pigs Fly, LLC: Creative Operational Concepts will be hosting their annual Ride Operator Trainer Certification (ROTC) in early February 2014 (dates TBA) in Las Vegas, Nevada at Circus Circus Hotel and Casino.

ROTC is an interactive hands-on, three-day "train the trainer" instructor course that provides creative teaching techniques for front line ride trainers. Instruction includes how to teach ride operator safety using the Ten Critical Components and the associated skills/tasks that form a cycle of operation for any attraction.

ROTC School teaches component skills through the instructional philosophy of Learn it! Link it! Live it!

•Learn it! is the information that the trainee must know about the skill or task, and background information so they understand why they perform the



task in the manner taught.

•Link it! is the portion of the training that allows the candidate to experience and practice the concepts being taught through demonstrations, exercises, activities, drills, and simulations to reiterate the importance of a task or skill.

•Live it! is the key to that the standard of performance is met in the field.

[www.CreativeOperationalConcepts.com](http://www.CreativeOperationalConcepts.com)

EUROPEAN SPARE AND REPLACEMENT PARTS IMPORTER

SINCE 1982

**NAPE**

NORTH AMERICAN PARTS INC.  
61C AERO DRIVE,  
BUFFALO, NEW YORK  
USA 14225

PHONE: (716) 839-4791

FAX: (716) 839-4506

EMAIL: [parts@nap-inc.com](mailto:parts@nap-inc.com)

[www.nap-inc.com](http://www.nap-inc.com)

SERVING THE AMUSEMENT INDUSTRY

WE'VE KEPT YOUR RIDES IN MOTION SINCE 1982





# FAST TRACK

COMPILED: Scott Rutherford,  
srutherford@amusementtoday.com

This summer, 80 teams of **Disneyland Resort** cast members raced around the Rivers of America during one of the oldest and most beloved cast traditions: the **Disneyland Resort Canoe Races**. The canoe races began in 1963 when a challenge was set forth between the Frontierland cast and Adventureland cast, igniting a tradition that has spread to Disney Parks around the world.

**York Pines, Inc.**, a development group representing the City of Sanford, Maine, has commissioned a feasibility study of the region to consider a major year-round tourist attraction as a catalyst for revitalization efforts. **Larry Wyatt**, Principal of **Wyatt Design Group** and world-renowned theme park and leisure destination master planning and design expert, along with prominent economic analyst **Frederick Cochrane** of **Cochrane Consulting** recently provided consultation on the prospect during a three-day workshop on location in Sanford.

**Laserforce International**, a manufacturer and supplier of high-quality laser tag systems, announced that it has opened a new office and assembly plant in the U.S. to serve the growing needs of the North American markets. The office will further complement Laserforce's service and support already established in the U.S. The new Laserforce office and assembly plant, located adjacent to Loveland Laser Tag in Loveland, Colorado, will provide the same high-quality control standards and "Quality Assurance" testing

and procedures that Laserforce is recognized for worldwide.

The 2014 **Haunted Attraction National Trade-show and Conference (HAuNTcon)** will be held in Houston, January 25-28, at the George R. Brown Convention Center, in conjunction with the 2014 **Halloween & Party Expo**. The two shows will take place concurrently, but in separated areas within the George R. Brown Convention Center and HAuNTcon attendees are invited to check out the Halloween & Party Expo as well as its educational sessions, trade-show, special areas, and popular events such as the Halloween Costume Style Show.

Since it first opened in 2002, **Thorpe Park** has been terrifying guests with its **Fright Nights** event. Over the years, mazes have come and gone but generally the event has evolved slowly but surely. In 2013, this will all change. Embarking on the biggest capital outlay the park has ever spent on Halloween, this year's event sees six attractions themed around famous Hollywood horror movies. The event will be themed as the Thorpe Park Movie Studios - an unused cinema where a deranged movie director brings the horror films to life and stages daily "casting calls" among guests.

Florida's **Gatorland** recently received 19 American Alligators, each six-to-eight feet in length, from **Busch Gardens Tampa** as part of an animal transfer between the two organizations. The animals, 10 male and nine female, had previously been placed on loan to Busch Gardens when they were much smaller. Having now doubled in size, the animals had outgrown their exhibit and needed to be transported back to Gatorland to be released into the Alligator Breeding Marsh where they will hopefully take part in the park's

annual breeding program.

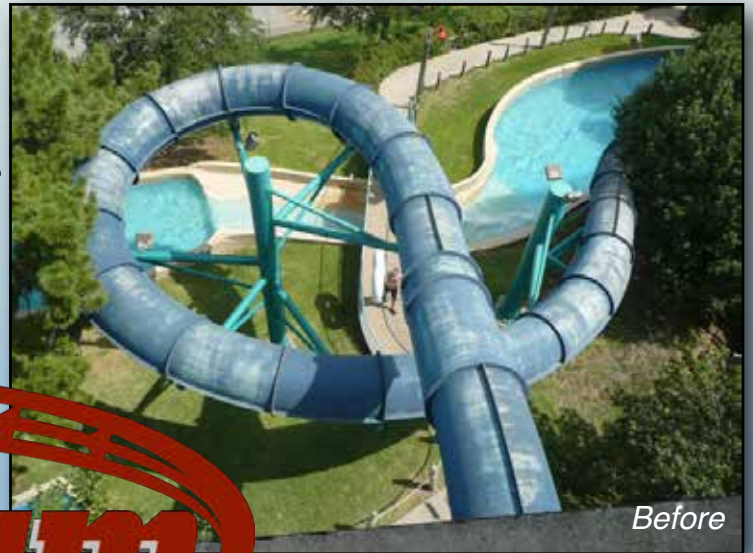
The **EDF Energy London Eye**, London's iconic observation wheel, recently welcomed its 50 millionth visitor since opening in March 2000. Originally only planned to open for five years, the giant wheel has enjoyed such success that it has been granted life-long permission to remain on the South Bank of the River Thames. As part of the **Merlin Entertainments Group**, the London Eye experience has evolved over the years to include: a 4D cinema experience; upgraded capsules to improve air temperature control and reduce overall carbon emissions; interactive touch screen guides in several languages; new products such as a Pimm's Experience and Dining at 135.

**Dubai Dolphinarium**, the only dolphin and seal show in the UAE, has appointed **Nijhawan Group** as its Sales and Marketing Representative in India. The Group will focus on designing sales and marketing strategies to position Dubai Dolphinarium as the leading family entertainment destination in the region.

Captain **Tom Forberg** has been with **Disney Cruise Line** since the very beginning. He is the first and longest-serving captain, oversaw the construction of all four Disney ships and served as the inaugural captain on each ship. So it is only fitting that he is named the first Commodore in the history of the company. Recently, the officers and crew aboard the Disney Fantasy joined President **Karl Holz**, Senior Vice President **Anthony Connelly**, Captain **Mickey** and Vice President **Bert Swets** in surprising Captain Tom with the honor and presenting him with his new hat. Commodore is an honorary appointment bestowed upon accomplished and distinguished leaders of military, commercial and cruise fleets.



Before



Before

*Don't let your  
Water Park's  
favorite slides  
fade away.*



After



After

*Specializing in high  
gloss, UV resistant  
fiberglass coatings that  
will make your rides shine  
beautifully for years  
to come.*

*visit [baynumpainting.com](http://baynumpainting.com) for more info*





# NEW JERSEY AMUSEMENT ASSOCIATION

## SUPERSTORM SANDY

# Restore, Rebuild and Reopen

## Waterparks helped push N.J.'s 'Stronger Than the Storm' theme

While many New Jersey amusement operators saw severe flood damage to their properties' attractions, facades and pier foundations after Hurricane Sandy made land-fall nearly a year ago, the Garden

State's waterparks — designed intrinsically to withstand the power of moving water — emerged in generally good shape.

Save for invasive sand and seawater that required the cleanup

and repair of some facilities and their pumping systems, the following parks were among those that were open and entertaining visitors at the traditional start of the season. The New Jersey Amuse-

ment Association and AT congratulate these operators and the many others who worked hard to restore normalcy and ensure plenty of family fun this past summer.



Ocean Oasis Waterpark and Beach Club, Surfside Pier, Morey's Piers, North Wildwood, N.J. COURTESY MOREY'S PIERS



Raging Waters Waterpark, Mariner's Landing, Morey's Piers, Wildwood, N.J. COURTESY MOREY'S PIERS



Storybook Seaport, Storybook Land, Egg Harbor Township, N.J. COURTESY STORYBOOK LAND



Breakwater Beach Waterpark, Casino Pier, Seaside Heights, N.J. COURTESY CASINO PIER



Runaway Rapids Waterpark, Keansburg Amusement Park, Keansburg, N.J. COURTESY KEANSBURG AMUSEMENT PARK



Pirate's Cove, Land of Make Believe, Hope, N.J. COURTESY LAND OF MAKE BELIEVE



After riding Fly! — The Great Nor'easter at Morey's Surfside Pier, Oprah Winfrey was greeted by Maggie Warner of Morey's Piers public relations. The media mogul even purchased a souvenir photo of herself on the looping coaster. COURTESY MOREY'S PIERS

## Oprah surprises Wildwood, conquers Great Nor'easter

WILDWOOD, N.J. — Visitors to this seaside resort were caught off-guard on August 30 when a whirlwind of the celebrity sort blew through town.

Oprah Winfrey, media titan and a star of the current box office hit *Lee Daniels' The Butler*, hit the famous boardwalk that warm Friday evening with her longtime beau, businessman Stedman Graham, and family and friends. Their sole aim: fun.

At Morey's Surfside Pier in North Wildwood, Winfrey kicked her shoes off and braved Fly! — The Great Nor'easter, a 1995 Vekoma suspended looping coaster, with several of her entourage. Afterward, she waded into the Labor Day weekend boardwalk throng, waving to and shaking hands with fans

who approached.

"I greeted Oprah as she exited the coaster platform and welcomed her to Morey's Piers," said Maggie Warner, manager of digital media and public relations for Morey's Piers. "Due to the large crowds, her visit was short-lived but it was exciting nonetheless."

Winfrey, Graham and Winfrey's best friend, Gayle King, were among the dignitaries in Cape May County for the 25th annual reunion of the Concerned Citizens of Whitesboro. Graham, a native of Whitesboro, located a few miles inland from Wildwood, is executive director of the non-profit community organization.

—Dean Lamanna

## CONTINUING COVERAGE | SUPERSTORM SANDY | FUNTOWN PIER FIRE

Battered FunTown Pier among businesses burned

## Disaster-weary Jersey Shore resorts endure trial by massive fire

**STORY:** Dean Lamanna  
dlamanna@amusementtoday.com

SEASIDE PARK, N.J. — Just short of a year after Hurricane Sandy left FunTown Pier and, in neighboring Seaside Heights, Casino Pier in ruins, a spectacular fire has swept the southern end of the boardwalk here.

The 10-alarm blaze on Thursday, September 12, left local residents and business owners reeling. And it thrust this still-recovering swath of the Jersey Shore — along with its staunchest supporter, New Jersey Governor Chris Christie — into the national news once again.

"This is obviously an unthinkable situation for us to be standing here and watching this," Christie said on the scene as more than 400 firefighters from nearly 40 companies poured water on the huge flames, later adding: "I feel like I want to throw up."

Firefighters were hampered by poor water pressure caused by Sandy-damaged infrastructure and afternoon winds of 20-30 mph, which fanned flames and thick, black smoke quickly north along a six-block stretch of the boardwalk (four blocks in Seaside Park, two in Seaside Heights). Aging, tar-roofed structures lining both sides of the promenade ignited as gusts whipped the flames around fire walls both above and below the boards.

Employees of Casino Pier, several blocks distant,



These aerials show the Sept. 12 Seaside Park, N.J. boardwalk on fire. Above, the 10-alarm blaze produced so much smoke that only the S&S Super Shot tower at FunTown Pier was visible. At right, more than 400 firefighters from 40 companies were called in to battle the blaze, which was covered live on national television news networks. PETER ACKERMAN/ASBURY PARK PRESS; USED WITH PERMISSION



and many business owners trained garden hoses on decks, facades and rooftops to douse flying embers.

To halt the conflagration's advance into Seaside Heights, three "trenches" were excavated by firefighters across

the newly replaced boardwalk — the last at Lincoln Avenue. The decision to tear up the boards undoubtedly was a difficult one, considering the local pride in how rapidly the storm-shattered walkway had been rebuilt (at a cost of \$7.6 million) in time for the summer season.

But the trenching effort helped contain the blaze — although not before it had raged for about nine hours and incinerated more than 50 businesses, including the pilings, several signs and other flammable remnants of FunTown Pier. The seaside amusement park, undertaking its post-Sandy cleanup much more slowly than the reopened Casino Pier, had reportedly been planning a 2014 comeback.

Fortunately, there were no serious injuries. Post-season visitors and the curious were flocking to the untouched section of boardwalk in Seaside Heights by the weekend.

A multi-agency investigation into the cause of the blaze determined that Sandy partly was to blame.

Initially labeled "suspicious," the origin of the fire, which began in a building in the 1800 block of the boardwalk occupied by Kohr's Frozen Custard and Biscayne Candies, was traced to electrical wiring dating back to the 1970s that appeared to have been compromised by the storm's corrosive seawater surge.

While announcing this conclusion at a press conference on September 17, Ocean County Prosecutor Joseph Coronato also cautioned beachfront proprietors: "If you're a property owner and you believe your electrical system came in contact with water and sand, the right thing to do is to have it inspected."

The arcing wires that likely caused the fire, Coronato noted, were concealed within the building's structure, beyond the reach of a typical inspection.

Within two days, Gov. Christie was conducting emergency recovery meetings with local business owners and officials.

Kimberle Samarelli, executive director of the New Jersey Amusement Association (NJAA), attended Christie's first hour-long, face-to-face session — describing it as "somber" but ultimately buoyed by the governor's forward-looking, can-do enthusiasm.

"Christie vowed to cut through any bureaucratic red tape in the fire recovery," Samarelli said. "He wanted to avoid the kind of negative media imagery that prevailed in Sandy's wake by seeing that the cleanup and insurance claim processes proceed properly but swiftly."

The New Jersey Economic Development Authority

► See FIRE, page 35



At left, flames fueled by strong and gusting winds up to 25 mph, erupt in a spectacular fireball at the FunTown Pier in Seaside Park, N.J. The disaster-weary amusement park is a total loss. Above, extended summer season beachgoers could do nothing but watch as FunTown Pier burned for hours, creating a massive smoke cloud. LEFT, ROBERT WARD AND ABOVE, BOB BIELK / ASBURY PARK PRESS; USED WITH PERMISSION

CONTINUING COVERAGE | SUPERSTORM SANDY | FUNTOWN PIER FIRE

# N.J. Haunted Manor enjoys spirited afterlife

## ► FIRE

Continued from page 34

### Attraction survives Sandy, evades fire

KEANSBURG, N.J. – Hollowgraves Haunted Manor has cheated death twice.

Last fall, while located at FunTown Pier in Seaside Park, the mobile walkthrough attraction seemed unlikely to stand a ghost of a chance against Hurricane Sandy's onslaught. But the dismantling and off-site storage of its more vulnerable show elements prior to the storm, combined with its location on a concrete-decked section of the pier, enabled it to survive.

And then, creator-owner Stan Ambro's decision to move his ghastly horror house entirely off the ravaged pier to a new spot at Keansburg Amusement Park proved fortunate: Hollowgraves was long gone by the time a boardwalk blaze spread across FunTown Pier last month — destroying whatever Sandy had left behind.

"It was a stroke of good

luck that I've ended up back at Keansburg," said Ambro, who had an earlier version of Hollowgraves at the park in 2002. The current attraction debuted here August 30 and will operate until Halloween.

Ambro, 46, a plumber and married father of three based in Wayne, has always loved the nuts and bolts of the amusement business — especially dark rides and walkthroughs. He grew up a big fan of noted designer Bill Tracy's interior theming for such classic attractions as the Whacky Shack and the Golden Nugget Mine Ride at the old Hunt's Pier in Wildwood.

"We're getting a lot of repeat visitors going through Hollowgraves — sometimes two, three times the same day," Ambro said. "When I'm up on the roof doing repairs, I can hear everybody inside having a great time. And that's why I enjoy doing this."

—Dean Lamanna



Hollowgraves Haunted Manor is a labor of love for its creator-owner, Stan Ambro, (left) who maintains the mobile attraction himself and has invested more than \$500,000 in it during 20-plus years of operation around New Jersey. It survived Hurricane Sandy while sited on FunTown Pier and currently haunts Keansburg Amusement Park. COURTESY STAN AMBRO

will make available an initial \$15 million in funds originally intended for Sandy recovery. Christie said grants of up to \$50,000 and loans of up to \$5 million would also be available to stricken business owners.

Samarelli, who, less than a week earlier, had been presented AT's Publisher's Pick Golden Ticket Award in Santa Cruz, Calif., for her dedication to assisting NJAA members and her own Seaside Heights community in their ongoing Sandy recovery, was — like many other locals — left a bit dazed by this latest disaster.

"The phones are ringing again, and the outpouring of support from all over is tremendous," she said. "But it's difficult, because how do you face these people a second time and say, 'I'm sorry. How can I help?' It's really sad."

## Kay Park Recreation Corp.

### 1-800-553-2476

[www.kaypark.com](http://www.kaypark.com)

Making people-places people-friendly since 1954

## RIDES FOR SALE

 <p>2010 SBF Airborne Shot (park model) \$175,000</p>	 <p>1993 SBF Balloon Wheel (newly installed drive and dynamic brake) \$75,000</p>	 <p>2000 Sellner Mfg. Bear Affair (park model) \$30,000</p>
 <p>2004 Zamperla Disk'O (portable model) \$499,000</p>	 <p>2008 Fredericksen Fun Slide (portable model) \$75,000</p>	 <p>1991 Wisdom Rides Gravitron (portable model) \$100,000</p>
 <p>2005 Technical park Super Miami (park model) \$450,000</p>		

All rides on location at:  
Gillian's Wonderland Pier  
Ocean City, N.J.  
and  
Gillian's Funland  
Sea Isle City, N.J.

For more information call:  
John Kavchok  
(609) 399-7082

# MARKETWATCH

## RIDING THE MARKET



\*Six Flags stock split on June 27, 2013

Company	Prices		52 Weeks	
	One Month Ago	09/19/13	High	Low
Cedar Fair L.P.	\$43.49	\$44.23	\$44.49	\$30.90
MGM Mirage	\$17.20	\$20.18	\$20.30	\$9.15
Six Flags Ent. Corp.*	\$33.74	\$36.09	\$40.31	\$26.60
CBS Corp.	\$51.09	\$56.57	\$57.47	\$31.84
Walt Disney Co.	\$61.83	\$65.72	\$67.89	\$46.53
Apollo Global Mgt. LLC	\$28.59	\$29.31	\$29.98	\$13.83
Blackstone Group	\$21.47	\$24.50	\$25.00	\$13.31
Village Roadshow	\$6.30	\$6.43	\$6.75	\$3.45
NBC Universal	\$23.85	\$24.46	\$24.95	\$19.87
SeaWorld Entertainment Inc.	\$33.51	\$31.56	\$39.65	\$28.38

## CURRENCY DIESEL PRICES



Region (U.S.)	As of 09/16/13	Change from year ago
East Coast	\$3.979	-\$0.146
Midwest	\$3.957	-\$0.123
Gulf Coast	\$3.889	-\$0.139
Mountain	\$3.941	-\$0.315
West Coast	\$4.032	-\$0.289
California	\$4.228	-\$0.238

### TOP 7 MOST TRADED CURRENCIES



On 09/19/13 \$1 USD =

0.7477 EURO
0.6267 GBP (British Pound)
98.95 JPY (Japanese Yen)
0.9244 CHF (Swiss Franc)
1.0671 AUD (Australian Dollar)
1.0290 CAD (Canadian Dollar)

## OBITUARIES



### Original B&B Carousel owner Jimmy McCullough dies at 84

BROOKLYN, N.Y. — **James 'Jimmy' McCullough, Jr.**, whose family has operated amusements in Coney Island for four generations, passed away at his home on August 19, 2013. He was 84.

Jimmy spent all his life as the owner/operator of amusement rides & concessions in Coney Island. He also traveled extensively on the state fair circuits. He proudly owned the original **B&B Carousel** that was sold to the City of New York, recently renovated and has reopened on the boardwalk in Coney Island.

In addition to being a master mechanic and entrepreneur, Jimmy's passions included flying, history, travel

and time with his family. He was known to all to be a hard working man with a humble demeanor. A true gentle giant, he will be greatly missed by all who had the pleasure of his acquaintance.

For more details on Jimmy's amusement industry adventures, see: <http://amusingthezillion.com/tag/james-mccullough>.

He is survived by daughter Carol, Mary and Anthony Meluso, Lois & Tim Goulis along with five grandchildren.

Those wishing to make an expression of sympathy in his memory are asked to consider a donation to St. Jude's Hospital or The Alzheimer's Foundation.



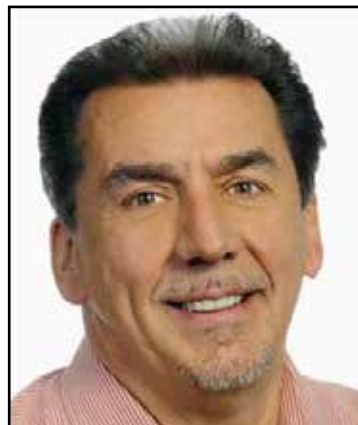
### Splash Adventure Waterpark manager Chuck Taylor dies

IRONDALE, Ala. — **Charles Allen "Chuck" Taylor** of Irondale, Ala. passed away August 11, 2013 as a result of an automobile accident. He was 49.

Chuck was the manager of **Splash Adventure Waterpark** in Bessemer and sat on the board of directors with the Bessemer Chamber of Commerce.

Chuck is survived by his father, Charles S. Taylor; sisters, Kathy Taylor Kuzawa, Charlene Taylor (Doug) Smith, and Angela Taylor (Michael) Jackson; nine nieces and nephews and four great nieces and nephews.

Memorial donations may be made to the Wounded Warrior Project at [woundedwarrior-project.org](http://woundedwarrior-project.org) or Wounded Warrior Project P.O. Box 758517 Topeka, Kansas 66675.



### Kiddieland GM Thomas Norini dies at 61

OAKBROOK, Ill.—**Thomas Allen Norini** passed away peacefully Sept 2, 2013. He was 61.

Tom was general manager of **Kiddieland Amusement Park** in Melrose Park, Ill. from the late 1970s until the park closed forever in 2009. Together with several members of his family, he operated Kiddieland, which was one of the nation's most admired traditional amusement parks aimed at families with young children.

Tom is survived by his mother, Helen Secord; wife, Cathy; and children, Courtenay (Shawn) Bach, Gianna (Zach Frjelic) Norini and Jake Norini.

A memorial service was held on Sept 27, 2013 in Oakbrook, Ill. Expressions of sympathy may be made in Tom's name to the American Diabetes Association or the American Heart Association.

## MAILBAG

### Reader agrees with September editorial column

Hi Gary,

I wanted to give you kudos about your "Not the good neighbor" article in the September issue of AT! It amazes me that people would chose to move near a noisy location, and then complain about noise after? They don't think about the noise of the neighborhood before they move in? People? Even more amazing is that cities would side with the complaining neighbors, rather than an economic driver such as an amusement park?

But, it happens near school yards, airports, etc. too. It is hard to understand the gall of some people.

I'm glad you brought it to light! People need to think!

**Marilee Gray**  
**Kay Park Recreation Corp.**  
**Janesville, Iowa**  
**Marilee@kaypark.com**

*Editor's note: We couldn't agree with your comments more!*

### Letter Policy

*Amusement Today* welcomes your letters. Letters should be no longer than 200 words and must have full name, company name and address as well as senders email address.

Email letters to: [gslade@amusementtoday.com](mailto:gslade@amusementtoday.com).

*Amusement Today* may edit the letters for style, and/or space considerations.

**LED LIGHTING**  
[www.amusementline.com](http://www.amusementline.com)

HIGH POWER LED BULBS  
 STRIP & TUBE LIGHTING  
 SPOT LIGHTS & FLOODLIGHTS

COLOR CHANGE LEDs

**AMUSEMENT LINE**

UNIFORM APPAREL  
 WICKING SHIRTS  
 FLAGS & POLES  
 LED LIGHTING  
 HEADWEAR  
 PRIZE BALLS

**CHESTNUT**

Chestnut Identity Apparel  
[www.amusementline.com](http://www.amusementline.com)  
 800-336-8977

# Quassy hosts NEAAPA's 100th anniversary, summer meeting



MIDDLEBURY, Conn. — More than 80 members of the New England Association of Amusement Parks and Attractions (NEAAPA) attended the organization's summer meeting Wednesday at Quassy Amusement Park in Middlebury, Conn. Activities included a facility tour, waterpark, laser maze, scavenger hunt, exclusive rides on Wooden Warrior roller coaster and a festive dinner. NEAAPA, celebrating its 100th anniversary this year, held a preview showing of its documentary titled "For The Fun Of It" after dark at Quassy's Carousel Theatre. The evening was capped off by a laser light show.

At right, the NEAAPA tour group posed for a photo with Quassy's Wooden Warrior roller coaster as the backdrop. Below right, NEAAPA members enjoy private lunch at Quassy's Lakeside Pavilion. Below, tour of Quassy Amusement Park was led by owners George Frantzis and Eric Anderson. Here, Frantzis (back to camera at center) chats about the old entrance to the property, which is now filled with attractions.

NEAAPA PHOTOS



## WILLIAM H. ROBINSON, INC.

The  
**B!g idea**  
People!

*CREATIVE MARKETING  
TV COMMERCIALS  
JINGLES  
BROCHURES & ARTWORK  
PHOTOGRAPHY  
INTERNET SOLUTIONS  
PROMOTIONS  
GROUP SALES TRAINING  
& MORE!*

*A Creative Services Company Serving the Amusement, Water Park & Support Industry for over 50 Years!*

1428 Maple Ave. • Hamilton, OH 45011 • 513.737.9012 • [www.TheBigIdeaPeople.com](http://www.TheBigIdeaPeople.com)



# NEWS & NOTES

[www.aimsintl.org](http://www.aimsintl.org)

Amusement Industry Manufacturers and Suppliers International, Ltd. • 3026 S. Orange • Santa Ana, Calif. 92707  
 Phone: (714) 425-5747 • Fax: (714) 276-9666 • E-mail: [aims.office@gmail.com](mailto:aims.office@gmail.com) • Web: [www.aimsintl.org](http://www.aimsintl.org)

## 2014 AIMS Intl. Safety Seminar: call for instructors

ORLANDO, Fla. — Have you ever wanted to teach at an AIMS Safety Seminar? The education committee is searching for individuals who would like to present a new or existing class at the AIMS Safety Seminar, January 13-17, 2014. If you think you have what it takes, contact Patty Beazley, education chairperson at [beazleyp@comcast.net](mailto:beazleyp@comcast.net).

## AIMS International seeking items for annual Silent Auction

ORLANDO, Fla. — AIMS International would like to remind members of the amusement industry to donate silent auction items to benefit the 2014 AIMS Safety Seminar, Jan. 12-17, 2014 in Orlando, Fla.

AIMS is always looking for items that can be used to raise funds to keep audio/visual and other equipment used in the classroom updated and as current as possible.

The silent auction does just that, as attendees bid on their favorite items that fit their individual collections.

To donate items, simply send them to:

**AIMS Silent Auction**  
**Holly Coston**  
**1829 N. Richmond**  
**Wichita, Kansas 67203**  
**(714) 425-5747**

The AIMS board of directors, seminar instructors and volunteers all thank you for your continued support of the AIMS Safety Seminar.



## MEMBER SPOTLIGHT

Company Name:  
**Maclan Corporation**

Company Representative **Maegan Wallace**

*BIO: The newest member to the Maclan team is Maegan Wallace. Having a Bachelor of Science in Business from University of Florida, Maegan is an enthusiastic Gator fan. Her marketing, sales and management experience come from first working in the real estate industry. After attending IAAPA last year and getting a taste of the excitement, she decided to put her degree to work for the family business. She has enjoyed diving right into her role of Marketing and Sales working alongside her brother, JR Lane. She helped launch Maclan's P.A.L. program in January of 2013, is a volunteer to the E.A.C. for Give Kids the World and continues to be focused on increasing sales and building Maclan's brand throughout the Amusement Industry. Link-In with her at [www.linkedin.com/in/maeganwallace/](http://www.linkedin.com/in/maeganwallace/)*



working with us it is more than business, its family – a priceless competitive advantage. Then we take it a step further offering more than just wheels, doing everything in house to save our customers more. In addition to our urethane division, we have a rubber division, complete CNC machine shop, metal fabrication, painting and sandblasting facilities so we are capable of providing a “one-stop-shop” convenience for our customers who need additional parts and services.

### What is something about your company that makes you especially proud?

Our father and grandfather are market pioneers of this industry. Now in our 3rd generation, Maclan continues to grow, offering the same value and service our customers have experienced since 1975. Recently launching our P.A.L. program we have been

able to give back to the community providing amusement and laughter through Give Kids The World. We are proud to help such a worthy cause!

### What are some of the challenges your company faces within the amusement industry today?

As roller coasters become bigger and faster, materials that meet the demand need to be developed. Maclan partners with its customers and suppliers developing and testing new materials constantly to provide the very best in safety and performance.

### How does your company benefit by being a member of AIMS?

We enjoy the support AIMS offers its members. With AIMS there are multiple opportunities to network with other industry professionals. It's a great group that fosters a fun atmosphere while keeping safety and standards a focus.

*Please tell us about a favorite memory, story, or special experience from the AIMS Safety Seminar? How can you pick a favorite? We love the AIMS Safety Seminar for the multitude of opportunities to network with industry professionals. The committee members do such a great job putting on the seminar to be both educational and fun!*

—Complied by Tony Claassen, AIMS board member

Space for this AIMS page is provided courtesy of Amusement Today as a corporate partner of AIMS Intl. Content is provided by AT & AIMS. Please direct comments to [info@aimsintl.org](mailto:info@aimsintl.org)



**AIMS SAFETY SEMINAR AND CERTIFICATION PROGRAM**  
**JANUARY 12-17, 2014**  
**ORLANDO, FLORIDA**  
**DOUBLETREE BY HILTON ORLANDO AT SEAWORLD**

**REGISTRATION FEE \$595 PER STUDENT**  
**EARLY BIRD DISCOUNT \$495**  
**CLOSES SEPTEMBER 1, 2013**  
**INFORMATION (714) 425-5747**  
**WWW.AIMSINTL.ORG**

## Setting new standards in family entertainment

# Great Wolf CEO Kimberly Schaefer takes 'paws-on' biz approach

**STORY:** Dean Lamanna  
dlamanna@amusementtoday.com

MADISON, Wis. — Many of us like to say our work is fun. But for Kimberly Schaefer, chief executive officer of Great Wolf Resorts, Inc. (GWR), fun is not only a job requirement but the successful end result.

Schaefer has served in a senior leadership role at GWR — with a dozen properties, it is North America's largest owner, operator and developer of drive-to family resorts featuring indoor waterparks and other family-oriented activities — for more than 15 years, helping to make it a shining exemplar of vacation entertainment.

Managing the growth of the brand, which enjoys over \$300 million in annual sales, is no small feat. Schaefer's behind-the-scenes work not only includes operations oversight of the company's resort portfolio, plus guiding the development of its main Great Wolf Lodge brand and strategizing the company's development and licensing arm for such brands as Scoops Kid Spa Salon and the live-action, interactive game experiences ShadowQuest and MagiQuest.

Prior to GWR's initial purchase offering in 2004, Schaefer served as senior vice president of operations for its predecessor. With more than 20 years in the hotel operations industry, she most recently served as president and chief operating officer of the company.

Schaefer is a graduate of Edgewood College in Madison, where she holds a Bachelor of Science degree in accounting. She continues her alumnus involvement by serving on the school's board of trustees and also is active in her community, participating in the annual 50-mile Challenge Walk for MS in Door County, Wis.

Aside from her position as "Mama Wolf" for GWR, Schaefer fulfills the role of mom. She resides with her husband David, daughter Samantha and son Maxwell in Waunakee, Wis. Her family has been an eager and active "test audience" for GWR's newest rides

and attractions for many years. Schaefer took a few moments to chat with AT about her vision for GWR and the company's future direction.

### How did you get into the business of fun?

I'm a CPA, an accountant, by original education and trade. And like so many people, when I got into the hospitality industry — my very first job in the hotel business was a controller position with the Crowne Plaza in Madison — I fell in love with it. Every day is a new adventure, with something different to be done. The service side of it is just something I really enjoy.

### What have you learned in shaping the evolution of GWR?

That you may get a policy or a procedure or a standard just right — and then you're going to change it. And that's because we're dealing with consumers, families and safety. There are so many avenues that we have to look at that are constantly changing. Change is inevitable in this industry; you never want to get too comfortable.

### What is the company's current laser focus?

Entertaining families. If we fail to recognize that our audience is comprised both of our pack members — our employees — and the guests that they service, we're just not going to be successful. We cannot take our eye off of entertaining families at the best value we can.

### How do you promote and maintain employee dedication and morale across your holdings?

We're constantly adding new attractions and amenities, so utilizing our pack members as much as we can in the field by having them share best practices and ideas is important. Of course, we can't get feedback from all 5,000 employees. But trying to utilize their input on each new project or initiative is a huge part of their growth, and ultimately, their level of job satisfaction.

### Your media bio affectionately refers to you as "Mama Wolf." Do people actually call you this around the office?

We like to brand everything around here. *(laughs)* That's a term that, unfortunately, I'll never be able to get



rid of. It's not necessarily used on a day-to-day basis; just any time there's something that talks about the overall envelopment of the team. Then the "Mama Wolf" comes out.

### What are some of the principles that inform your management style, and how does being a mom guide some of them?

I've found that there are a lot of similarities between being a mom and a CEO — like compassion and the willingness to see people grow and have their own way of think-

ing. We're shaping our pack members into a culture, whereas with children, you're raising them to take on the world. In both cases, it's important to involve them in decisions. You can't tell somebody every single thing that they need to do; you want to teach people to think and give them the tools to be able to do their job.

### How have your two children served as a "test audience" for GWR attractions?

That's been fun. They're both teenagers now, and my daughter is off at college. But I'd consult them any time we were introducing new things, such as Scoops Kids Spa. I had my daughter and her friends picking out colors and pitching in different ideas. It was great to have their feedback, because it reflected how others in their age group felt.

### Like Herschend Family Entertainment CEO Joel Manby, you were featured

on the TV show *Undercover Boss*. What did you find the most eye-opening about that experience?

There were a couple of take-aways and observations. The biggest was, when you have employees come in and do their job every day, sometimes you take for granted what they must do behind the scenes to get to that point. My original view during the recession was, "Protect as many jobs as we can — and let's keep trying to grow so that our people have a great place to work."

What I didn't realize was that people were going through a lot of tough personal times — like having a spouse lose a job — yet they were coming to work every day, putting on a smiling face and really trying to make things happen for us. That was so touching to me. I knew then that it wasn't just about having

► See SCHAEFER, page 40

**WHO and WHY REAMUSEMENT?**

Are your workloads continuing to increase and staffing at a minimum?

REAMUSEMENT is the quality choice for you. We will be your partner in completing maintenance "rehabs," renovations, or new construction.

Our goal is to provide quality maintenance of your trains, ride units, and structures to minimize the turnaround time to ensure your guests have the maximum entertainment experience.

**Our Services**

Rebuild ride units per manufacturer's specifications • Rebuild ride units to meet all codes and certifications • Fiberglass repairs • Carpentry repairs • Repainting • Inside storage • Welding if discovered after NDT testing • Refurbish flat ride components and ride units • NDT inspections for the ride units per the manufacturer's specifications • Assist with on-site set up if maintenance staff needs assistance • General contractor and/or assist with construction projects • Ride erection needs

1310 West Fourth Street  
Mansfield, OH 44906  
Office: (567) 247-8204  
Fax: (419) 529-4288

Contact:  
Jack Falfas | (419) 202-7876  
Gary Gast | (567) 247-8204  
Randy Payne | (567) 247-8204

reamusement@gmail.com  
sales@reamusement.com



**Kimberly Schaefer, "Mama Wolf" (i.e., CEO) of Great Wolf Resorts, Inc., oversees 5,000 "pack members" (i.e., employees) and family-oriented entertainment properties with annual sales of more than \$300 million.**  
COURTESY GREAT WOLF RESORTS

## ►SCHAEFER

Continued from page 39

a job; it was about promoting the whole family dynamic.

One of the specific things we did as a result of that experience was establish our annual Golf Outing, where we raise money for scholarships for our pack members so that they can continue to further their education and better themselves and their families.

**Are there times, as an executive, that call for you to be**

a "Big Bad Mama Wolf"?

Sure. It's important to challenge the company. We want to do the very best we can to service the guests and take care of our pack members. Plus, there are times you have to ask, "Are we being as efficient as we can be? Are there things that we should be doing differently?"

Part of my job as a CEO is also to ensure that the company is profitable — and sometimes that means changing things that may not be favorable to everybody in the field.

**Where do you feel the company needs improvement?**

Obviously, the world slowed down a little bit for a while, so we haven't opened any new resorts. But the nice thing about not having opened a new lodge opening in four years is that we've really been able to fine-tune our operations. We've become a stronger and more streamlined company.

**What GWR projects in-the-making are you most excited about?**

Our newest opportunity is a conversion project we're doing in Fitchburg, outside Boston. It's going to be a really fun property — the first where we've taken an existing building and turned it into a Great Wolf Lodge. It represents a new business model for us, as well."

**Has there been any movement on your proposed Garden Grove location in Southern California?**

California has a tough (business) environment, but, yes, we believe this will be an excellent project and it continues to push along. It will be a license and management opportunity for us. We want to be in the right markets, and whether that means we own or license / manage is a decision we make for each individual location.

**What do you love most about working in this industry?**

Even if it's just for a short period, at Great Wolf, we make a difference in the lives of the families that come to our properties. We're giving them an opportunity to spend time together, to relax and enjoy each other's company — and in today's world that is pretty precious. I absolutely love to see kids thanking their parents for an amazing time as they're walking out the door. And we're grateful to have had the opportunity to entertain them.

**T.H.E.** Affiliated with Allied for 30 years.  
INSURANCE COMPANY

[www.alliedspecialty.com](http://www.alliedspecialty.com)

**calm**

**30 Years of Dedicated Service**  
to the Leisure, Entertainment and Amusement Industries.

At **Allied Specialty Insurance** we understand your business and its risks better than any of our competitors. Our coverage is innovative and affordable. Our **24/7 claims service** lets you know that you can count on us.

With Allied you're always floating in **calm waters**... so relax...we have you covered.

Pick up the phone **TODAY** and call us for a free rate quote.

**"30 Years and 3 Generations"**

Visit us at booth **#546**

800.235.8774 | Fax 888.345.1588



SPECIALTY INSURANCE

[tellmore@alliedspecialty.com](mailto:tellmore@alliedspecialty.com)





# MIDWAY

CARNIVALS

STATE FAIRS

REVENUE

SUPPLIERS

## 2013 Minnesota State Fair attendance down from 2012 but officials pleased as single-day attendance record is set

**STORY:** Pam Sherborne  
psherborne@amusementtoday.com

ST. PAUL, Minn. — Final attendance figures at the 2013 Minnesota State Fair, Aug. 22-Sept. 2, showed, 1,731,162 fair-goers found their way onto the grounds.

This is a decrease of about 50,000 from 2012, but still managed to rank in the top 10 attendances in the history of the fair.

Officials were pleased particularly since this year's fair ranked as the third hottest measured by average daily temperatures of 88.2 degrees. And, once the weather broke, the final Sunday, Sept. 1, drew the fair's biggest single attendance day in the fair's history



Attendance at the 2013 may have fallen short of the 2012 totals, but officials were definitely pleased with the 1.7 million patrons that attended the fair, the third hottest in the fair's history. COURTESY MINNESOTA STATE FAIR

with 236,197 visitors.

"It was great in the beginning and great at the end," said Brienna Schuette, fair

spokeswoman, at the end of the fair. "In the middle, the extreme heat and humidity kept some people away or diverted

their plans till the end of the fair to come and visit us, when the weather sort of eased up for us."

Some of the fair's vendors found that sales were down, but they also blamed the hot  
▶ See MINN, page 42

## 2013 Wilson County Fair sets attendance record



This Technical Park Vortex was a hit at the 2013 Wilson County Fair, Lebanon, Tenn., Aug. 16-24. Owned by Josh Macaroni, Family Attractions, it was booked onto the midway by Amusements of America, which provides the midway for the Wilson County Fair. COURTESY DIANNA MORRISON

**STORY:** Pam Sherborne  
psherborne@amusementtoday.com

LEBANON, Tenn. — The 2013 Wilson County Fair, Aug. 16-24, became the fair to beat when 589,229 patrons set an all time record this year.

The previous attendance record was set in 2011 when 545,945 visitors came through the gates.

Officials feel that improvements made to the traffic flow for this year's fair paid off, but Hale Moss, Wilson County Fair President said more traffic improvements could be and would be made.

"As we grow, we have to look at that," Moss said. "Our job at this point is to keep tweaking it and looking at all the components and sugges-  
▶ See WILSON, page 42

**Factory wholesale pricing! • Over 100 designs available! • Made in the USA**



Toll Free: (800) 395-9980 • email: lisa@sippersbydesign.com • www.sippersbydesign.com

## ►MINN

Continued from page 41

muggy weather.

The independent midway hosted 61 rides combining both the midway and the kiddie midway. There were a total of 25 operators. Deggeller Attractions was a new operator this year and brought a new ride to the fair, the Riptide Roller Coaster, manufactured by Pinfari. That ride ranked number three in the top 10 rides.

Air Raid also was a new ride brought to the fair this year. Owned by KB Conces-

sions/Playworld Unlimited, ranked number eight and was manufactured by Zamperla.

Zamperla's Sky Flyer was another new ride to the fair this year. That ride, brought in by Reithoffer Shows, ranked number two in the top 10 rides.

The 2013 fair featured 48 new foods including bacon-wrapped shrimp on-a-stick, Big Andy sandwich, bourbon wurst breakfast sausage corn-dog, taco slider trio, Cajun pork rinds, candied bacon cannoli, chipotle chicken salad fajita, chocolate chili ice cream, chop dogs, cocoa cheese bites;

comet corn; craft beer-battered onion rings; and deep fried bread pudding.

Carl's Gizmo Sandwiches was awarded the Best Food or Beverage Award.

On Sunday, Sept. 1, the Minnesota State Fair board of managers met and approved plans to move forward with the renovation of the Heritage Square area and addition of a transit hub to the west end of the fairgrounds.

The 2014 Minnesota State Fair will run Aug. 21 through Labor Day, Sept. 1.

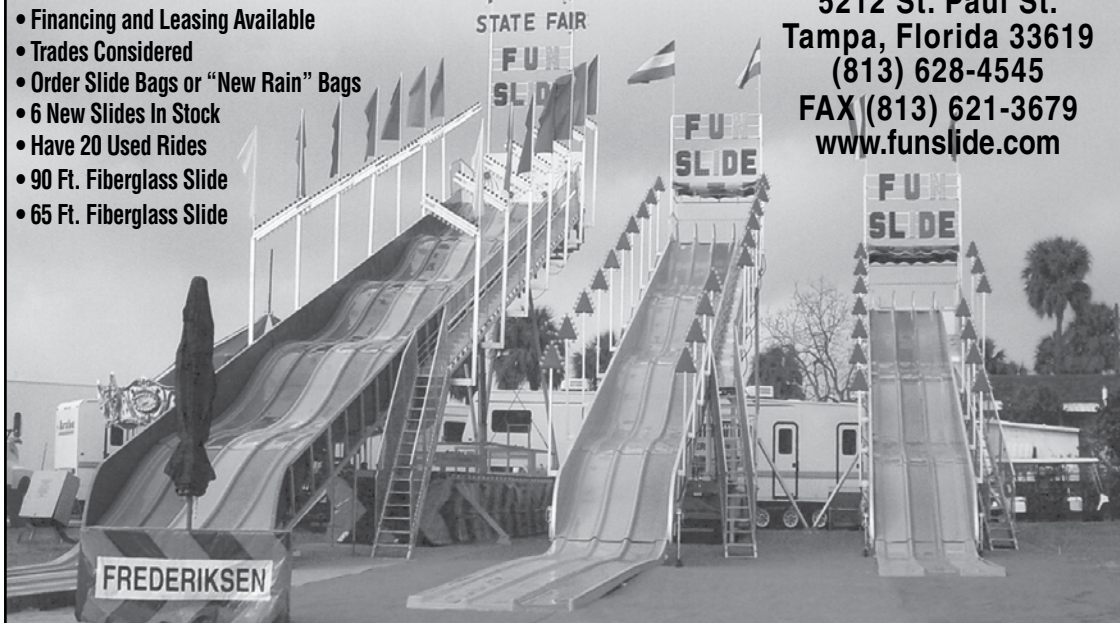
## 2013 Minnesota State Fair Top Ten Midway/Kidway Rides

1. **Crazy Mouse Spinning Roller Coaster**, Reverchon, owned by S.J. Entertainment
2. **Sky Flyer**, Zamperla, Reithoffer Equipment Co., Inc.
3. **Riptide Roller Coaster**, Pinfari, Deggeller Attractions, Inc.
4. **Puppy Express Roller Coaster**, mfg. unknown, Prime Pacific Enterprises, LLC
5. **Techno Power**, Tivoli, Wood Entertainment Co., Inc.
6. **Starship 3000**, Wisdom, Wood Entertainment Co., Inc.
7. **Gondola Wheel**, Mulligan, Playworld Unlimited
8. **Air Raid**, Zamperla, KB Concessions, LLC
9. **Raiders**, Wisdom, Rose's Rides, LLC
10. **Fun Factory**, KMG, McDonagh's Amusements, Inc. dba Sky-Attractions, LLC

**"The #1 Leading Slide Manufacturer in America"**  
**"World's Largest 5 Lane, One Trailer Slide - 108 Ft."**

- Financing and Leasing Available
- Trades Considered
- Order Slide Bags or "New Rain" Bags
- 6 New Slides In Stock
- Have 20 Used Rides
- 90 Ft. Fiberglass Slide
- 65 Ft. Fiberglass Slide

**FREDERIKSEN  
INDUSTRIES, INC.**  
5212 St. Paul St.  
Tampa, Florida 33619  
(813) 628-4545  
FAX (813) 621-3679  
www.funslide.com



## ►WILSON

Continued from page 41

tions."

The fair drew more than 500,000 for the third-straight year and fourth time in the past five years.

Weather, reputation, publicity and word of mouth all contributed to the record attendance, Moss said.

There were 123,953 that attended the final Saturday at the 2013 Wilson County Festival breaking the all time record for any day in Wilson County Fair History.

Amusements of America provided 54 rides on the mid-

way, including new rides for the fair such as the Sizzler, manufactured by Wisdom and a Barbizon Ghoul City dark ride.

Also new on the midway was a Technical Park Vortex, owned by Josh Macaroni, Family Attractions, which was booked by Amusements of America.

The Vortex made quite a splash. The ride comes in both mobile and park units. The height is 46 feet and the width is 69 feet. It has two cars with an estimated hourly capacity of 1,000.

It also requires three semi trailers.

## Gold Medal Shows completes first year at Dickson Co. Fair



Gold Medal Shows had its first year at the 2013 Dickson (Tenn.) County Fair, Sept. 2-8. Running this unit for carnival owner Pat Guthrie was John and Angel Young, Forever Young Amusements. The midway included rides from both Gold Medal Shows and Forever Young Amusements, the latter owning this Heart Flip, manufactured by High-Lite Rides.

AT/SUE NICHOLS

amusementtoday.com



- 24 Seats
- Up to 48 Children
- Holds Adults Up to 200 lbs.
- Simultaneous Loading/Unloading
- Set-up Fast and Easy!
- Pull with Pickup

Another "family ride" also available...  
Big Eli Construction Zone



1-800-274-0211 fax 217-479-0103

info@elibridge.com elibridge.com



Visit us at the 2013 IAAPA Show.  
Indoor Booth 4222 Outdoors 7012.



Vertigo

Frenzy



1506 Fernwood Road • Wintersville, OH 43953 • Phone: 740-264-6599 • Fax: 740-266-2953  
[WWW.AMRIDES.COM](http://WWW.AMRIDES.COM)





## MIDWAYLIGHTS

COMPILED: Pam Sherborne, psherborne@amusementtoday.com

One week before the opening of the **Big E Fair**, Springfield, Mass., **Eastern States Exposition** and **Hard Rock** announced a unique program to celebrate the annual event and the partnership of these organizations with the townspeople of West Springfield: a lottery that provided 500 complimentary tickets to residents of the community.

Additionally, Hard Rock was to debut its "Treasures of Hard Rock" exhibit for the 17 days of the fair, featuring a world-class collection of memorabilia from musical artists, including Elvis, Bob Marley, Bono, Elton John, Shakira and others.

The Big E was held Sept. 13-29.

Those wanting to enter the lottery for a free ticket to the fair emailed their names and addresses. The winners were selected the day before the fair began, Sept. 12.

The 2013 Big E featured a new Wine and Cheese Barn, headline entertainment, free grounds entertainment, and **North American Midway Entertainment** on the midway.

Despite rainstorms early in the week, **Eastern Idaho State Fair** (Blackfoot, Idaho) Fair Manager **Branndon Bird** said it was a record year. The fair ran Aug. 31-Sept. 7.

For the first time ever, both concert nights sold out and all other grandstand events had record attendance.

"It's the dedication of thousands of people that make this fair great," Bird said. "Everyone from the exhibitors to concessionaires, sponsors to employees and especially those who attended this year's event have made our 'Feeding Frenzy' something we will never forget."

Outlaw Catering attracted a crowd at the Best Fair Food Awards on Aug. 29, with their Bullseye Burger winning "Fairest of them All" and "Grilled Cheese Donut" winning "Best New Food Creation."

**Butler Amusements** provided the midway this year and brought a variety of rides and attractions. New to this fair this year was the **Vertigo**, by **ARM**.

The 2013 **Oregon State Fair**, Salem, Aug. 23-Sept. 2, attendance was down 5.6 percent from last year, according to preliminary figures from the **Oregon Parks and Recreation Department**.

A total of 196,814 people attended this year, while 208,392 people attended in 2012.

Paid concerts accounted for the largest difference between this year and 2012, the department said in a press release. About 35,000 people purchased tickets and no events were sold out in 2013, while 53,000 people bought tickets last year with one sell-out event.

However, public participation in arts and crafts competitions went up this year, in some cases by 50 percent.

This year's fair days also were warmer than 2012, and Salem's weather station recorded rain on five days between Aug. 23 and Sept. 2.

**Funtastic Traveling Shows** provided the 2013 midway.

The 2013 **Colorado State Fair**, Pueblo, Aug. 23-Sept. 2, attracted 476,966 visitors, up from last year's 474,914, for the 11-day annual event.

This year's fair was blessed with good weather, warm days and mostly sunny skies, from opening on Aug. 23 through Labor Day, which marked the official end of the fair.

From the annual Colorado State Fair Parade on the first Saturday and several days of PRCA Rodeo to daily promotions for the military, kids, seniors and all the rest, the popular exposition offered something for everyone.

**Crabtree Amusements** provided the midway with about 45 rides. This was the seventh year for Crabtree Amusements at the Colorado State Fair.

State fair officials were apprehensive going in about how the public would respond to the new cashless system of paying for food, drink and carnival tickets with debit-like smartcards in place of money. Despite some initial concern, the new system seems to have worked well enough to continue using in the future.

Fair General Manager **Chris Wiseman** said the payment system would be refined next year to allow fairgoers with unused smartcard balances to receive refunds upon request, even on the same day they are used.

Officials of the 2013 **Nebraska State Fair**, Grand Island, Neb. Aug. 23-Sept. 2, were pleased with the results of this year's fair including the new midway provider, **Wade Shows**.

Wade Shows brought 38 rides and has future plans to offer a free playground for children shorter than 36 inches for the 2014 fair. The midway size at Grand Island is 800 feet long and 210 feet wide.

The Nebraska State Fair set a new single-day attendance record this year since moving to Grand Island with a total of 71,355 fairgoers on Sunday, September 1, 2013. Total attendance this year came in at 334,931, a drop from 2012 of 2,056 visitors.

Executive Director **Joseph McDermott** said the heat was certainly an issue for the first nine days of the fair.

"This single day attendance record surpassed our previous record of 67,929 on the same Sunday in 2011," according to McDermott. "It was only 367 visitors short of the all time state fair single day attendance record of 71,627 set in 2009, the final year the state fair was in Lincoln."

This year's **Pacific National Exhibition**, Vancouver, B.C., which ran Aug. 17-Sept. 2, was deemed a success by organizers even though attendance numbers fell short of expectations.

The 103rd edition of the event attracted 712,049 people, according to organizers.

That's short of the 800,000 expected when the fair began and is less than the 763,000 attendees in 2012.

The PNE made several changes to its format this year in a bid to get more people through the gates, including lower ticket and parking prices.

The annual event closed down on two Mondays for the first time in its history to try to save money on traditionally slow days.

It also was dealt some problems, such as two power outages during fair hours and several rainy days.

"This was the first year of a five-year plan to energize the fair at the PNE," PNE President and CEO **Michael McDaniel** said in a statement. "Overall we were very pleased with the experience our guests received despite the operational challenges of two power outages and some rain on a couple of key fair days."

**Playland Amusement Park**, the 15-acre amusement park on the PNE property, is the midway for the fair.

Next year's PNE will run from Aug. 16 to Sept. 1, 2014.

Total attendance for this year's **New York State Fair**, N.Y., was up slightly from 2012, but was still the second lowest in the past 10 years.

Fair officials said the final tally for all 12 days was 851,157. That's up 5,562 from last year, or about six-tenths of 1 percent.

The fair opened Aug. 22, and the gates closed on Sept. 2.

The all-time record for fair attendance was 2001, when 1,011,248 people came through the gates.

The fair did set one record this year, though: Most \$1 baked potatoes sold. This year, 54,587 potatoes were sold in the Horticulture Building. The previous record was 50,966.

That translated into one potato every 10 seconds, according to a fair news release.

Assistant Fair Director **Troy Waffner** deemed the 12-day fair a huge success.

"I think it was a good, solid fair," Waffner said. "From the initial reports from vendors, a lot of their sales have stayed steady or grown. We had some great concerts out there at Chevy Court. We had more grandstand concerts this year than last year."

The fair also launched four new exhibits this year, the most in years, Waffner said. Those were the Taste N.Y. tent, the history of the state fair exhibit, the Onondaga Lake display, and the birthing center where people could watch baby animals being born.

**James E. Strates** provides the midway for the fair and this year brought in three new rides, all kiddie rides. They were the **Volkswagen**, **Tractor** and the **Quad Runner**, all from **Dalton Rides**.

Popular returning rides included the **KMG Fire Ball** and **Top Spin** by **Huss**.

And then there was the food, including this year's new high-fat entry, the Southern Fried Chicken Donut.

THROUGH *the* SMILES, *the* SEASONS & *the* MILES –  
Financing everything for the outdoor amusement industry since 2000.

**Prairie Financial**

The Outdoor Amusement Division of Boulevard Bank

Paul Muller  
pnmuller@blvdbank.net

Wade Muller  
wmuller@blvdbank.net

Mark Walker  
mwalker@blvdbank.net

816-554-3863 blvdbank.com/outdoor-amusement

A division of





# 46<sup>th</sup> Annual

## TRADE SHOW & EXTRAVAGANZA

**OUR EXHIBITORS HAVE ALL OF YOUR NEEDS FOR  
CARNIVAL, CIRCUS, AMUSEMENT PARK ATTRACTIONS,  
RENTAL COMPANIES, INFLATABLES, FOOD SUPPLIES,  
GAME MERCHANDISE, REDEMPTION CENTERS, HARDWOOD,  
TOOLS, INSURANCE AND EVEN FINANCING.  
SOMETHING FOR EVERYONE!! DON'T MISS IT!!**

**February 4 - 8, 2014**

**P.O. Box 189 \* Gibsonton \* Florida 33534**

**(813) 677-9377 \* Fax (813) 677-1041**

**[www.gibtownshowmensclub.com](http://www.gibtownshowmensclub.com)**



**BE SURE TO VISIT OUR 2014  
I.I.S.F. SUPER TRADE SHOW & EXTRAVAGANZA  
FEATURING THE WORLD'S LARGEST  
OUTDOOR AMUSEMENT DEVICES EVER  
ASSEMBLED & DISPLAYED**

## MIDWAY MARKET PLACE

**"Arch" Ticket Booth**  
 Midway Stainless Fabricators  
 Hillside, NJ PH 908-624-9660 www.midwaystainless.com

**\$12,975.00**  
 OR AS LOW AS **\$11,975.00** **13 feet HIGH**

- \*ATTRACTIVE NEW ARCH DESIGN
- \*4 WAY BACK LIGHTED LED UPPER MARQUEE
- \*LED SCROLLING SIGN BOARD
- \*HEAVY DUTY POWDER COATED ALUMINUM
- \*WRAP AROUND INSIDE COUNTERS
- \*FLIP UP LIGHTED FRONT COUNTER



Whatever your Industry...



**INDIANA TICKET COMPANY**  
 Design / Quality / Security

Manufacturers of Quality Tickets For over 70 years

**1-800-428-8640**

- Redemption Tickets
- Admission Tickets
- Direct Thermal Tickets
- Reserved Seating
- Wristbands
- Credentials

www.muncienovelty.com info@muncienovelty.com

MUNCIE NOVELTY INC. COMPANY

We've got your Ticket.



Providing Mobile And Permanent Food Preparation And Sales Solutions.

**HITCH-HIKER MFG.** 330.542.3052

**Gull Wing Industries**  
 Working with the Carnival Industry since 1989

Contact us at:  
[www.gull-wing.com](http://www.gull-wing.com)




Pack-Man 175 kw or 250 kw  
 Quiet Power—Tractor or Trailer Mounted

**Gull Wing**  
 309 N.E. 1st Street PO. Box 128 Alta, IA 51002  
 Toll Free: 800-838-1482 Fax: 712-200-1936

GFlex 400 Amp

Keep our carnival and fair industry strong!  
 Buy products and services from these suppliers.

## Photo review of regional fairs

### Union County Fair

Sonshine Amusements played the Union County Fair, Anna, Ill., Aug. 15-24, this year bringing along rides and attractions for all ages. Seen here is the carnival's Speedway ride manufactured by Zamperla.

AT/SUE NICHOLS



### Elizabethtown Fair



The Elizabethtown (Pa.) Fair celebrated its 40th anniversary this year during its run August 19-24. Ken Benner has been at that spot 22 years. He brokered the participation of five amusement operators: Sunshine Amusements (Troy Benner); Penn Valley Shows (Kerry Benner); S & S Amusements (Steve and Adam Swika); Snyder's Amusements (Adam Brotzman); and RMG Little Time Amusements (Rodney Good). The six day fair culminated with a fireworks show the last evening. The Elizabethtown Fair is one of seven throughout Lancaster County each year. Pennsylvania communities hold over 100 fairs and carnivals each year.

COURTESY B. DEREK SHAW

### LeRoy Fall Festival



Among an array of rides and attractions Swyear Amusements brought to the annual LeRoy (Ill.) Fall Festival, which ran this year Aug. 20-24, was the Mardi Gras two-story maze. Manufactured by Owens Trailer, the attraction ends with a spiral slide. The carnival also brought along its Wisdom Tornado. Swyear Amusements was started by Ray and Janice Swyear and is now in the hands of their son and wife, Terry and Kathy Swyear. Terry and Kathy Swyear, along with their oldest son, Adam, and Roger & Teresa Swyear and their son Kyle, all work in the day-to-day operations of the company.

AT/SUE NICHOLS



# MARKETPLACE

AmusementToday.com

AUCTIONS

EQUIPMENT

OPPORTUNITIES

SERVICES

**AUCTION**

**NORTON  
AUCTIONEERS**

**THE INDUSTRY EXPERTS!**  
Professional Auctioneers & Appraisers  
*Carnivals • Parks • Carousels  
FEC's • Museums • Tourist Attractions*  
P.O. Box 279, Coldwater, MI 49036  
**517-279-9063**  
Fax: 517-279-4899  
www.nortonauctioneers.com  
E-mail: Dan@nortonauctioneers.com

**FOR SALE**



**LOOPING COASTER**

Launch Loop Shuttle Coaster  
Arrow Dynamics all steel with  
G-Force 4, 56' high x 635' long  
Built in 1977, excellent condition in  
Indiana. \$100,000  
For photos and details:  
ralph@vestil.com  
22 Other Rides

**FOR SALE**



Chance Sea Dragon T/M..... \$149,000  
Moser Top Spin T/M..... \$449,000  
Zamperla Mini Jet 10 Sweep P/M.....  
..... \$19,000  
Zamperla Swing 20 P/M ..... \$14,900  
Zamperla Fire Chief T/M..... \$99,000  
S & S Frog Hopper T/M..... \$59,000  
Zamperla Family Coaster T/M.....  
..... \$79,000  
Chance Pharaohs Fury T/M Completely  
Rebuilt ..... \$695,000  
Moser Flipping Action Arm P/M.....  
..... \$169,000  
Tivoli Remix T/M ..... \$425,000  
Zamperla Truck Stop T/M ..... \$24,000

Call Len or John  
(908) 526-8009  
FAX: (908) 526-4535

**OPPORTUNITY**

**SMOKEY MOUNTAIN AMUSEMENTS  
INC.** Needs Ride Help In All  
Departments:  
Ride Superintendent - For Green Unit.  
Electrician - For Green Unit.

Contact:  
Brian (Beaver) Bitner  
(919) 272-5627  
Billy Clark  
(863) 738-1689

---

**WHITewater 10 YEAR INSPECTIONS**  
3rd party insurance and safety inspec-  
tions. California QSI inspections. Former  
Disney Safety Manager. Amusement and  
waterparks.

www.safetycertify.com  
(916) 772-2698

**FOR SALE**

**2008 CAPCO CENTER TRAILER**  
Like-new condition, 18'x8', removable  
hitch, all hydraulic, goes to ground level,  
extra awning lights.

\$40,300 - Call EJ Dean (978) 375-2542

**FOR SALE**

**FOR SALE**  
"60 Horse Chance Grand Carousel-  
Outside row of Bradley & Kaye horses.  
2 loads (4 pup trailers) \$425,000

**2008 Tivoli Remix II, T/M.** Excellent  
Condition \$490,000

Call EJ Dean 978-375-2542

**USED SMART BALLS**  
13 large - \$800.00 ea  
4 small - \$500.00 ea  
Many other redemption games  
Contact Ralph in Indiana  
e-mail: Ralph@vestil.com

**FOR SALE**

**FOR SALE**

**Top of the Line Laser Show Equipment  
Used Two Seasons**

**Your own custom show available from Producer in Florida.  
Service, if needed, available from service center in Southern US.**

**GREAT ATTRACTION FOR A DRY PARK**

**Reason for selling – Our Water Park Guests leave before dark.**

**Paid \$335,000, asking \$200,000**

**For More Information, please contact:  
Sam Haynes | Blue Bayou Water Park  
(225) 931-6000**



4800 Osuna Road NE • Albuquerque, NM 87109

Cliff's Amusement Park in Albuquerque,  
N.M. is seeking resumes for the full time  
position of **Maintenance Manager**. Cliff's  
has been providing safe family entertain-  
ment for 54 years. A full benefit employ-  
ment package is included. 5 years of ex-  
perience with references required.

Contact Justin Hays at (505) 881-9373  
x117 or justin@cliffs.net for further  
information.



**FOR SALE**  
Paratrooper  
\$24,000  
Indiana Location  
ralph@vestil.com

**OTHER RIDES AVAILABLE**

**KIDDIE RIDES FOR SALE**  
Turtles: \$4,500  
Hampton Cars: \$5,000  
Space Train: \$2,500  
Little Dipper Coaster: \$4,500  
Sky Fighter: \$4,500

**ADULT**  
Paratrooper: \$24,000  
Troika: \$65,000  
Calypso: \$22,000  
House of Glass Maze: \$1,000  
Dual Flume Water Slide: \$15,000  
Bayern Curve: \$19,500  
Tubs of Fun: \$2,500

ralph@vestil.com  
Angola, Indiana

**facebook**  
Find us on Facebook  
facebook.com/amusementtoday

**twitter**  
Follow us on Twitter  
twitter.com/amusementtoday

**YouTube**  
Subscribe to our YouTube channel  
youtube.com/amusementtoday



**Subscribe today to  
receive 14 issues  
of Amusement  
Today per year!  
(817) 460-7220**

amusementtoday.com



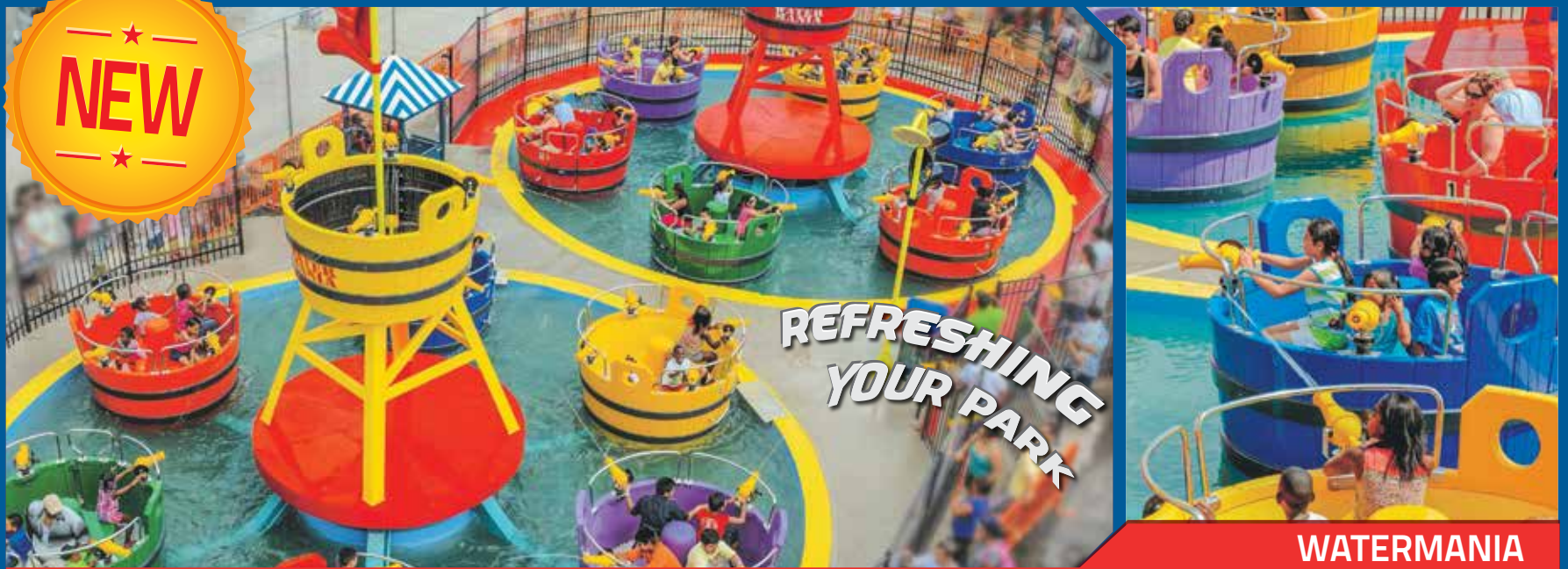
ZAMPERLA®

The Amusement Rides Company

AIR RACE



NEW



LAUNCH INTO FUN!



MOTOCOASTER

[www.zamperla.com](http://www.zamperla.com)