

AMUSEMENT TODAY™

Vol. 16 • Issue 3 **JUNE 2012**

Two traditional parks turn to Zamperla for thrill factor

AirRace takes flight at Utah's Lagoon

FARMINGTON, Utah — Inspired by what they saw at Coney Island's Luna Park last year, Lagoon officials called upon Zamperla to create for them a version of the Italian ride manufacturer's spectacular AirRace attraction.

Just as with the prototype AirRace at Luna Park, Lagoon's new ride replicates the thrill and sensations of an acrobatic airplane flight with maneuvers such as banks, loops and dives.

Accommodating up to 24 riders in six four-seater airplane-shaped gondolas, AirRace combines a six-rpm rotation with a motor driven sweep undulation that provides various multi-vector sensations. The gondolas reach a maximum height of 26 feet above the ground while 'pilots' feel the acceleration of almost four Gs, both right-side-up and inverted. The over-the-shoulder restraint incorporated into the seats holds riders during the simulated flight, and with a minimum height requirement of just 48 inches, AirRace is one of Lagoon's most accessible family thrill rides. When operating at peak capacity, the new ride can accommodate approximately 480 guests per hour.

► See **LAGOON**, page 4



Lagoon's newest thrill ride is this AirRace from Zamperla. Seating 24 riders per cycle, the ride swings 'pilots' up and over to reach 26 feet above ground while accelerating to almost four Gs, both right side up and inverted.

COURTESY LAGOON

Massive Black Widow swings into historic Kennywood Park

STORY: Scott Rutherford
srutherford@amusementtoday.com

WEST MIFFLIN, Pa. — Guests visiting Kennywood Park this season will find something decidedly sinister lurking in the back corner of Lost Kennywood. The park's newest addition to its impressive ride arsenal is Black Widow, a Zamperla Giant Discovery 40 swinging pendulum ride.

Overlooking the final swoop turn of the Phantom's Revenge and the Monongahela River far below, Black Widow is constructed on the former site of Pittfall, the 251-foot-tall second-generation Intamin freefall that operated at Kennywood from 1997 through 2011.

Farewell Pittfall

When asked about the decision to remove Pittfall, Kennywood officials agree that it was time for the ride to go. "Though it had its share of fans, the Pittfall just wasn't that popular anymore. And the capacity was nothing compared to most of our rides," said Kennywood General Manager Jerome Gibas. "It was also due for a major overhaul and we all knew its days were limited."

"That's right. Ridership was certainly down on Pittfall and then there was the ongoing maintenance issues," added Rob Henninger, Kennywood's assistant general manager and



Black Widow, a Zamperla Giant Discovery 40 swinging pendulum ride, has invaded Kennywood Park this season. Located in the Lost Kennywood section of the park on the site of the former Pittfall free fall, Black Widow accommodates 40 guests per cycle. AT/SCOTT RUTHERFORD

director of maintenance and construction. "We looked at it from several perspectives and it just made good business sense to remove Pittfall and replace it with something like Black Widow. I think this ride

is going to be a big hit with our guests. We offer a lot of different experiences here at Kennywood and this one fits in perfectly."

► See **KENNYWOOD**, page 4

NEWSPAPER

POSTMASTER: Dated material.
PLEASE RUSH!
Mailed Friday, May 25, 2012

PRSRST STD
US POSTAGE
PAID
FT. WORTH TX
PERMIT # 2069

SUBSCRIBE TO
AMUSEMENT TODAY
(817) 460-7220

amusementtoday.com

www.GOLDENTICKETAWARDS.com

JOIN US IN SEPTEMBER!



Dollywood

SEPTEMBER 7-8, 2012

GOLDENTICKETAWARDS.com



NEWTALK

OPINIONS

CARTOON

LETTERS

AT CONTACTS

EDITORIAL: Gary Slade, gslade@amusementtoday.com

Standard equipment?



Slade

I know some are going to disagree with what I'm about to write, but after touring several new waterparks and slide towers this spring and all of last year, I've come to the conclusion that it's time for all of the waterpark slide suppliers to make a stand.

Too many times I have seen a beautiful new slide tower without a top roof covering to protect the guests and the lifeguard/slide operator from the sun. When a roof structure is added, many times it looks out of place or just comes across as an afterthought.

I know parks view the roof (or covering) as an item they can install cheaper than purchasing new from the supplier, but it's time for the suppliers to start pushing for their platform covering design more.

Also, while on the subject of waterparks, I've reached the conclusion that suppliers should offer their slide towers to include the tube/raft conveyor as part of the total package on any slide that requires tubes/rafts with a capacity of three guests or more. Park guests seem to manage the single tubes and double donut tubes up the staircases fine, but anything more than that always seems to be an issue that clogs up the line and slows down the overall capacity. Plus it takes away from the guest experience, as the soon-to-be rider is having to work by carrying a tube/raft to just enjoy the slide?

Roller coaster suppliers don't allow parks to buy a new coaster without a lift hill, it's time waterpark suppliers did the same. Yes, I know it's a competitive thing, an outlet for a park on a limited budget, but in the long run is it really worth it?

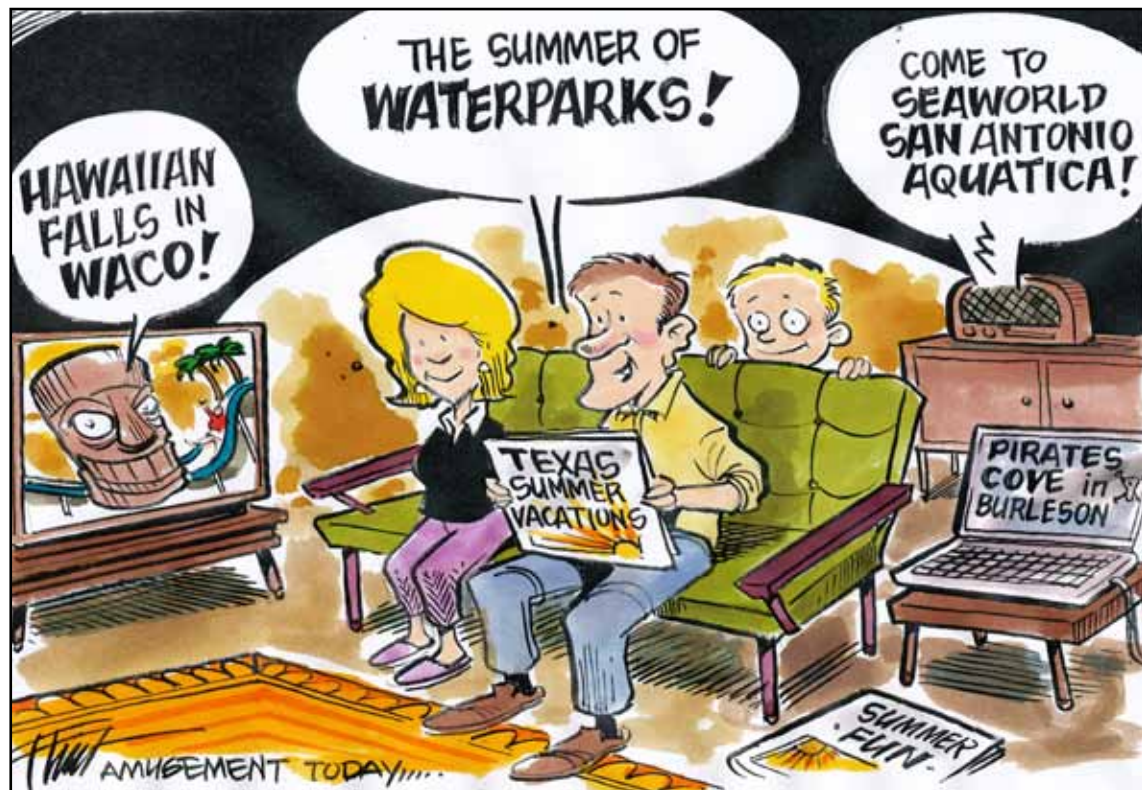
Suppliers: please dig down a little deeper in your sales presentations and convince the waterparks that platform shade structure and the lift conveyor (to get tubes/rafts up to the dispatch point) are standard equipment and included in the purchase price.

The guests will thank the park with repeat visits, and in turn the park will thank you, the supplier.

—Gary Slade

Gary Slade is the founder and publisher of Amusement Today. His love for amusement parks began at age six when he first visited Pontchartrain Beach Amusement Park and Six Flags Over Texas. His long newspaper career helped lead to the launch of AT in 1997.

CARTOON: Bubba Flint



EDITORIAL: Scott Rutherford, srutherford@amusementtoday.com

Showcasing history



Rutherford

Anyone who knows me is well aware of my penchant for history. Though my interests may encompass a broad range of subjects, none is more dear to me than my ongoing research into and preservation of amusement industry heritage, particularly wooden roller coasters.

So it should come as no surprise how much I support and admire the efforts of those behind the National Roller Coaster Museum and Archives. Founded in 2001 by a group of industry professionals and historians, the NRCMA's honorable mission is to "discover, preserve, interpret and share the historical heritage of the roller coaster for present and future generations." Although many may have heard of the NRCMA, only those who have personally investigated and examined the artifacts and memorabilia housed in the group's massive Plainview, Texas storage facility can truly appreciate the scope and dedication behind this endeavor.

Quietly and with too little recognition, the NRCMA has been steadily amassing items that range from historical photographs and postcards up to complete, full-size roller coaster trains and sections of the track on which they once carried excited rid-

ers. Though viewing the collection can be somewhat heartbreaking when you realize just how much has been lost, those of us who truly care about such things can take comfort in the fact that at least some tangible components of a favorite attraction have been saved.

While the NRCMA's long term plan is to construct a permanent home to house the ever-growing collection, the immediate goal is to assemble and build displays for several temporary exhibits set to be opened in 2012 and beyond. The exhibits will focus on local parks and include both the story of the roller coaster as well as images of celebrated parks no longer in existence.

The very first of these temporary endeavors – The National Roller Coaster Museum and Archives Premiere Exhibition – is currently being assembled. Over the past few months, a select group of historians, collectors and artists have diligently worked to create this amazing and unique display, which will be unveiled later this summer within an existing structure at Dollywood in Pigeon Forge, Tenn.

And it should be mentioned that just as with the NRCMA itself, this "Premiere Exhibition" is possible only because of dedicated volunteers who selflessly donate their time, energy and passion so that others might enjoy and be inspired to begin their own quest for historical preservation.

AMUSEMENT TODAY STAFF

Gary Slade, Founder
Publisher and Editor-in-Chief
(817) 460-7220
gslade@amusementtoday.com

Stacey Childress / Childress Media
Web & Graphic Design
(817) 889-4441
stacey@staceychildress.com

John Robinson / W.H.R. Inc.
Daily E-mail Newsletter
johnwrobinson@cinci.rr.com

Tim Baldwin
Editorial
tbaldwin@amusementtoday.com

Pam Sherborne
Editorial
psherborne@amusementtoday.com

Scott Rutherford
Editorial
srutherford@amusementtoday.com

Jeffrey L. Seifert
Editorial / Special Projects
jseifert@amusementtoday.com

Sammy Piccola
Accounting / Circulation
(817) 460-7220
spiccola@amusementtoday.com

Sue Nichols
Advertising
(615) 662-0252
snichols@amusementtoday.com

Bubba Flint
Cartoonist
bflint@amusementtoday.com

AMUSEMENT TODAY

Deliveries
2012 E. Randol Mill Rd, Suite 203
Arlington, Texas 76011

Member of:
IAAPA, AIMS International, PAPA,
NEAAPA, NJAA, OABA, WWA, TTIA,
NAARSO and IISF

Subscription rates are: 1 year (14 issues) \$75 in the USA; \$100 elsewhere; 2 years (28 issues) \$140/\$180; 3 years (42 issues) \$200/\$250. Send check or money order (U.S. funds only, drawn on a U.S. bank) to Amusement Today, P.O. Box 5427, Arlington, Texas 76005-5427. Your cancelled check is your receipt. Please allow up to six weeks for your subscription request to be processed and the first issue mailed.

Amusement Today is an independent newspaper, published monthly by Amusement Today Inc., P.O. Box 5427, Arlington, Texas 76005. Presort Standard Postage (Permit No. 2069) pre-paid at Fort Worth, Texas. The entire contents of this newspaper and its related Web sites are copyrighted and trademarked by Amusement Today 2012, with all rights reserved.

POSTMASTER: Please send address changes to Amusement Today, P.O. Box 5427, Arlington, Texas 76005-5427.

Contributors: Terri Adams, Dean Lamanna, Andrew Mellor, B. Derek Shaw, Richard Munch, Janice Witherow, WHR Inc.

2 MINUTE DRILL



COMPILED: Janice Witherow

Brian Knoebel, Knoebels Amusement Resort

Brian Knoebel knows no other job than working at his family's charming amusement park, Knoebels Amusement Resort, in the rolling hills of Pennsylvania. He has worked in nearly every department at the park over the years to get a true understanding of what goes on and how to manage almost any situation. Brian is involved in IAAPA and serves on the Amusement Parks and Attractions Committee and dedicates his time as a volunteer at his church in various capacities. Married to his high school sweetheart, Dawna, Brian and his wife have two daughters. His strong work ethic, friendly manner and pride in his family come across the moment you meet him.

Title

We don't have titles at Knoebels, but Fireman would probably work. I'm supposed to extinguish the daily "fires"

Number of years with Knoebels

In a way 39, but officially 19.

Best thing about the industry

It's overused, but true. The people you meet along the way.

Favorite amusement ride

The Phoenix.

If I wasn't working in the amusement industry, I would be ...

A pro golfer (dreaming).

Biggest challenge facing our industry

The economy, ADA compliancy and motivating the next generation.

The thing I like most about amusement/water park season is ...

The challenge.

The band I would most like to be in is ...

Milli Vanilli. Remember them (famous for lip synching)? You REALLY don't want to hear me sing!

I typically celebrate my birthday by ...

Working, it's on Memorial Day weekend. And, eating lots of cake of course.

On my screensaver right now is ...

Scrolling pictures of my family.

The most I have ever spent on a meal is ...

\$100 during IAAPA Attractions Expo.



Celebrating the 25th anniversary of the Phoenix roller coaster at Knoebels Amusement Resort in 2010 was l to r: Rick Knoebel, Dick Knoebel and Brian Knoebel.

AT/FILE

Favorite place to catch up on reading

Somewhere in a beach chair.

My first job was ...

Sorting the different colored ride tickets in our park office, age 2 or 3. (Still waiting on back pay!)

It's June! My favorite summertime activity is ...

Golfing ... when I can get away.

The last time I went swimming was ...

Last week in my backyard pool that my wife spent a fortune on.

I never miss this show on TV ...

Seinfeld re-runs.

All-time favorite sports team

Whoever Brett Favre un-retires for.

Pick one: beer or wine?

Neither. Occasionally I'll drink a Martini.

The most interesting thing I have heard lately is ...

If God brought you to it, He will get you through it.

My "catch phrase" is ...

I don't really have one, but let's go with "Inspect what you Expect."

Twenty years ago, I was ...

Attending college majoring in Food and Hospitality Management.

Twenty years from now, I hope to be ...

Able to spend more time with friends and family.

When I say politics, you say ...

Don't get me started.

My ideal vacation is ...

No walkie-talkie and no cell phone.

Favorite holiday

Christmas, but I wish it were less commercialized.



Knoebel

THIS MONTH IN HISTORY

Presented by



www.RollerCoasterMuseum.org

•**1895: Euclid Beach Park** on Cleveland's east side opened on June 22 as a beer garden along with gambling and freak shows. In 1901 the park was purchased by the **Humphrey Family** who expanded the beach and changed the operation to a family-friendly park, eliminating the beer garden, gambling and freak shows. Euclid Beach remained in operation as an amusement park until 1969. Its loss is still lamented by locals who have fond memories of the park.

•**1913: Paradise Park**, at Fort George, in New York was completely destroyed by fire on June 9. The park was the largest open-air amusement resort on Manhattan Island, and was visited by thousands the next day, who wandered aimlessly through the wreckage of merry-go-rounds, dance halls, and roller coasters. By the end of 1919, the few remaining roller coasters and rides operated outside the former park were removed as the property was sold for real estate development.

•**1926: Burke's Glen Amusement Park**, in Wilkensburg, Pa., opened on June 15. Built on the south side of the William Penn Highway near Elliott Road, the park featured an assortment of rides and attractions, including a fun house, a swimming pool and picnic grove. The local favorite, **John A. Miller's Speedhound** roller coaster was a landmark on Rt. 22. The park would lose most of its rides, but limped along until 1974. Today a car dealership is found on the former true roadside attraction.

•**1932: Liberty Pier** in West Haven, Conn., was virtually wiped out on June 11, by the most destructive fire in the history of Savin Rock, the Coney Island of Connecticut. Marathon dancers fled the flames and the total loss was estimated at \$150,000 to the amusement park and pier. Lost in the fire were many concession stands and a local favorite, the 1925 **John A. Miller** designed **Red Devil** roller coaster. Three firefighters were hurt in fighting the 10-hour fire on Long Island Sound.

•**1978:** The first roller coaster convention, Coaster Con I, was held June 9-11 at **Busch Gardens: The Old Country** in Williamsburg, Virginia, with just over 50 enthusiasts in attendance. That Sunday morning, on June 11 a new organization, **American Coaster Enthusiasts**, was born out of an impromptu meeting of about 15 individuals who attended the first business meeting.

•**1989:** On June 23, **Upper Clements Park** in Nova Scotia opened its doors to the public. The park was funded by the government of Nova Scotia as part of a regional economic development scheme for south-western Nova Scotia and is currently owned and operated by the non profit, community-based group The Upper Clements Parks Society.

•**2001:** After much delay, **Bonfante Gardens Theme Park** in Gilroy, California, opens to the public on June 15. A project of the Nob Hill Supermarket chain owners **Michael and Claudia Bonfante**, the park evolved gradually from the Nob Hill Family Park in 1977 to become a theme park in 2001. The park struggled financially for several years and was eventually sold to the city of Gilroy. It is currently managed by **Cedar Fair** and operates as **Gilroy Gardens Family Theme Park**.

AMUSEMENT TODAY™

P.O. Box 5427
Arlington, Texas 76005-5427
(817) 460-7220
Fax (817) 265-NEWS (6397)

IAAPA

5-time Award Winner

facebook

Find us on Facebook
facebook.com/amusementtoday

twitter

Follow us on Twitter
twitter.com/amusementtoday

YouTube

Subscribe to our YouTube channel
youtube.com/amusementtoday



Get a free QR Code scanner for your phone
by visiting www.mobiletag.com.

►LAGOON

Continued from page 1

AT spoke with Lagoon Marketing Department Spokesman Adam Leishman about why this particular model and manufacturer was chosen and how the public is responding to the new ride. "We saw AirRace at Coney Island and felt that it was not only a great looking ride but had the potential to appeal to a large demographic with its thrilling action for riders and unique spectator appeal," explained Leishman. "We were able to meet with Zamperla while we were at Luna Park, and shortly after decided that this would be a great partnership for our

2012 ride offering. Since installation at Lagoon this spring, we've had an overwhelmingly positive response from riders and those watching on the ground. As you can see, this is a spectacular looking ride and we are very excited to add AirRace to our selection of family thrill rides here at Lagoon."

AirRace is located next door to one of Lagoon's two classic Schwarzkopf coasters, Jet Star II. When the new ride takes flight, it always draws a crowd. "On our new AirRace, every rider gets a bird's eye view," added Leishman. "And it's also a great show for those watching down below."

—Scott Rutherford



Zamperla's success with the AirRace at its Luna Park in New York led Lagoon officials to add the ride to the Salt Lake City park this season, thanks in part to its acrobatic airplane maneuver-like motions.
COURTESY LAGOON



►KENNYWOOD

Continued from page 1

Zamperla's product shines

With several other Zamperla attractions operating at Kennywood, it was an easy choice for park officials when they were looking for their next big ride. "Along with their prices being competitive and their product being on the cutting edge, they provide excellent service during and after the purchase," said Gibas. "Working with Ramon [Rosario] and Valerio [Ferrari] over the years has always been a good experience for us here. Our parent company, Palace Entertainment, has excellent relations with Zamperla, so it was smooth and pleasant for everyone involved."

Up goes the spider

Rising nine stories above the midway, Black Widow's massive gondola is supported by four steel legs painted gray with black accents to mimic those of a giant arachnid.

The Black Widow experience begins with 40 guests being secured with over-the-shoulder restraints in outward-facing suspended seats with their legs dangling. With no cumbersome seat belts to deal with, operators make a quick check and then retreat as the boarding platform separates into eight pie-like wedges that smoothly slide away on metal tracks to allow for proper clearance. This unique loading platform, which also incorporates an ADA-compliant wheelchair ramp, was custom designed by Zamperla from Kennywood specifications.

Once the operator receives the all-clear signal, the giant gondola begins to swing in a pendulum motion while rotating counterclockwise. It takes only a few passes before the gondola reaches its maximum altitude. At the peak of the swing — an impressive 120 degrees from the center and 146 feet above the ground — riders experience a feeling of weightlessness as well as being virtually inverted if their seat happens to be on the top position. The rotation and pendulum motion creates a variety of different sensations depending on a rider's specific orientation. This combination of elements guarantees a unique ride experience every time.



Black Widow's rotating 40-person gondola reaches a swinging speed of 68 mph and climbs 120 degrees from the center and 146 feet above the ground. Right, a bird's eye view of Black Widow from atop the Phantom's Revenge.

AT/SCOTT RUTHERFORD

To the astonishment of onlookers that flock to watch Black Widow in action, the 68 mph pendulum motion generates a mighty wind blast each time the gondola swoops through the loading area. Even non-riders are impressed by the awe and power of Black Widow.

As for the new ride's thrill factor, Gibas thinks they've hit another home run. "The first part of our season is all about school picnics, and this kind of ride is something that's right up their alley. They absolutely love it."

Aesthetically, the new ride is a handsome addition to Kennywood. Along with glass lamps around the perimeter, downward facing spotlights on the top of the structure and a ring of bright lights on the bottom of the gondola, Black Widow is complimented by the addition of new brick pavers that replace the old asphalt. "That's something Palace decided on," said Gibas. "They've done it at their properties in Europe and they liked it. The pavers are a new adventure for us. We're going to see how they hold up and then look at using them at



various other areas around the park."

Kennywood's Future

What the future holds for one of America's most beloved trolley parks is something that's on everyone's mind at Kennywood. "Palace is a great company and they're very aggressive. If you look at what we've added in the last few years, you'll see what I mean," said Gibas. "Along with the new Black Widow, we put in the SkyRocket launch coaster, a third Potato Patch, the sand pit over in Kiddieland and lot of other things. They are determined to keep Kennywood updated with new attractions while maintaining the traditional aspect of the park. A perfect indication of that is our classic Auto Ride. That's going through a major rebuild. People love that old ride and Palace is committed to making sure the park keeps that traditional look and feel while still being progressive. Thanks to our management team here and Palace's experience with older parks in Europe, we've got some exciting things coming to Kennywood in the future."



INTERNATIONAL

PARKS

ATTRACTIONS

RESORTS

SUPPLIERS

The Swarm hits Thorpe Park

STORY: Andrew Mellor
amellor@amusementtoday.com

UNITED KINGDOM — Europe's tallest "winged" roller coaster made its debut at the U.K.'s Thorpe Park in March, bringing yet another major thrill ride experience to the venue touted as "the nation's thrill capital."

Launched with a film premiere, red carpet style "premier screaming" event, The Swarm is a Bolliger and Mabillard-built wing coaster and is the first such attraction to come to the U.K.

Dominating the new Swarm Island section of the park, the ride is incorporated into a fully themed area depicting scenes of "apocalyptic devastation" following an alien invasion of earth, with news bulletins provided in the queue line setting the mood. It features a seating arrangement in which riders are positioned on either side of the track (two on each side of each 28-seater train) with nothing above or below them, leaving them feeling exposed and vulnerable.

The theme behind the new thriller sees park visitors invited to take a death defying flight for their lives through surroundings of devastation and destruction. Featuring a unique, 127 foot (38.7 meters), head first, inverted drop straight under the wing of a wrecked plane and eyes-tight-shut near misses which take riders amazingly close to a flaming fire truck, rotating helicopter blades and the walls of a life-size church, The Swarm tests the nerves of even the bravest of coaster fans.

The area also accommodates a shop, various games operations and the new Roast and Relish eating outlet. Engineers took 48 days to construct the 1,000 tons of track on which two menacing looking, creature-like trains travel around at almost 100 kph.



Thorpe Park's new wing rider coaster from B&M, The Swarm, is the first such ride to arrive in the U.K. The theme of "apocalyptic devastation" following an alien invasion is a crucial part of the ride experience. The Swarm uses a jet airplane as part of the near misses that provide the added rider excitement. COURTESY THORPE PARK



Reporter's Notebook

Mack Rides details new logistics center expansion

GERMANY — Mack Rides has released details on the expansion of its new logistics center the company is undertaking on Mauermattenstrasse in Waldkirch. The new facility, which enlarges the location by more than 21,500 square feet, will allow Mack to respond faster to the growing number of customer orders.

"The great response to and interest in our quality products with the 'Made in Germany' seal all over the world encourage us in our decision to invest in the location in Waldkirch," said Managing Director Christian von Elverfeldt.

Slated to come online in late October, the new facility will offer direct links to the vehicle manufacturing and track production facilities as well as provide the company with an important new tool to track material flow.

Quoted

"It's been an interesting project to work on and to design and I'm sure it will be very popular addition."

—Interlink Managing Director John Hudd said on their design of a super flume for Finland's PowerPark



Ital International LLC

Major, Family and Spectacular Rides





Bertazzon: Park Model & One-Trailer Rides





Technical Park: Park Model & One-Trailer Rides

Check out the hundreds of new and used rides at www.italintl.com

Ital International LLC | Phone: 615-383-3986 | Fax: 615-383-9244 | E-Mail: sales@italintl.com

KidZania attraction set for London by 2014

STORY: Andrew Mellor
amellor@amusementtoday.com

UNITED KINGDOM — KidZania, the role play theme park concept in which children get to take part in traditionally adult activities and jobs, has announced a new licence agreement with Longshot Kids Ltd. to bring KidZania to the U.K. by 2014.

Led by British entrepreneurs Joel Cadbury and Ollie Vigors, Longshot Kids is a subsidiary of Longshot Ltd. which has developed a wide range of property and leisure businesses across the U.K. Interests include restaurants and inns, the famous Groucho Club,

a private members club for the media and entertainment business, and a London-based health and fitness club. Joel Cadbury is also chairman of the Royal Parks Foundation, the charitable organization responsible for 5,000 acres of London's eight royal parks.

Speaking at the signing of the new licence agreement, KidZania CEO Xavier Lopez, said: "London is a flagship European market for KidZania and we have a brilliant and creative partner in Longshot." For the U.K. organization, Cadbury noted: "It is a privilege to bring this unique educational and entertainment experience to

the children of Great Britain."

KidZania family edutainment centers provide children aged between four and 14 with an interactive and entertaining educational environment in which they can take part in role play activities that mimic a wide range of adult activities. The attractions on offer combine role play with real life in a city designed to both educate and inspire its young visitors.

The indoor theme park functions like a real city, complete with buildings, paved streets, a "functioning economy" and recognizable destinations in the form of "establishments"

sponsored and branded by leading multi-national and local brands. Roles children can play include some of the more familiar adult jobs such as a fireman, policeman, doctor, shopkeeper, chef, mechanic, pilot and many more.

London is considered by KidZania as an ideal location for its attraction, due to its population size and the recognized wish in the U.K. to provide high-quality educational opportunities for youngsters, which aligns perfectly with KidZania's purpose. The location for KidZania London will be announced in the near future, with opening scheduled for 2014.

Super 78 in preproduction on film for Dinosaur Land

CHINA — Super 78 Studios in Los Angeles, Calif., is producing an animated feature for release in both the U.S. and China in late 2013. China Dinosaur Land, one of China's largest and most popular theme parks, has partnered with the LA-based creative design and production company to co-produce the film while developing the concept for an attraction that will be built in the park.

Mido Dino is a family animated feature in a magical world where dinosaurs and humans live together.

"Working with Super 78 we're confident we can establish *Mido Dino* as a well-known, international brand," said Horus Tsai, creative producer, Changzhou Dinosaur Land.

Tsai said that in addition to the film and theme park attraction, his organization is also looking to extend the *Mido Dino* franchise through the creation of a TV series as well as pursue mobile game platforms, stage performances, and other potential branded products.

"We've enjoyed our partnership with China Dinosaur Land and admire the innovative strategy they're using to optimize their creative investment by simultaneously developing a film and attraction," said Brent Young, chief creative officer for Super 78.

In addition to a film and theme park attraction, development of a *Mido Dino* interactive game and children's book are also in the works.

China Dinosaur Land is one of China's largest and most popular theme parks. Based in Changzhou, the park features more than 30 attractions.



A scene from the new *Mido Dino* film currently in preproduction from Super 78 Studios. This film is being developed for China Dinosaur Land.

COURTESY SUPER 78 STUDIOS

Gerstlauer SkyFly opens in Germany



The Flying Ninjago took flight this spring above the streets of Little Asia at Legoland Germany. The new attraction is one of three SkyFly attractions from Gerstlauer Amusement Rides opening this season. The others include Air Meeting at France's Nigloland and Teenage Mutant Ninja Turtles Shell Shock at Mall of America's Nickelodeon Universe. The SkyFly ride reaches a height of 72 feet, features 12 seats and swings riders at 25 mph.

COURTESY GERSTLAUER



Maurer Rides goes green on two coasters

STORY: Scott Rutherford
srutherford@amusementtoday.com

GERMANY — Two of Maurer Rides' X-Car roller coaster installations are basking in the spotlight not only for being exciting thrill rides but also for their power-saving propulsion and braking systems.

The flywheel is hardly new technology; the principle was readily seen in the Neolithic spindle and the potter's wheel as well as the reciprocating engine where it maintains constant angular velocity of the crankshaft. In amusement ride applications, the flywheel was utilized by Arrow Development in 1959 to ensure prescribed speeds on Disneyland's Matterhorn Bobsleds. Anton Schwarzkopf and Werner Stengel used it to propel the trains on their second-generation Shuttle Loop coasters in the late 1970s.

Today, Maurer Rides' use of the flywheel as a cost-saving form of temporary energy storage is a major component of two popular European steel coasters, Formule X, the company's first X-Car Coaster that opened in 2007 at Holland's Drievliet Amusement Park; and the new-for-2011 Freischütz at Germany's Bayern-Park. Instead of traditional chain lifts, both coasters feature Linear Synchronous Motor (LSM) magnetic propulsion systems that require 500,000 watts per launch. These massive power-hungry boosts are not taken from the respective park's main electrical circuit but instead from flywheels. After each launch, it takes just 11 seconds until the flywheel is fully recharged at a fraction of what would have been necessary from a direct power launch.

Maurer went a step further in energy conservation with Bayern-Park's Freischütz. Along with the power-saving flywheel/LSM launch, Maurer engineers developed an ingenious system that recovers the trains' own braking energy and uses it for the next power boost. Instead of being converted into heat that is simply allowed to dissipate, the energy produced by braking the incoming trains

is temporarily stored and re-used for the next launch. In conjunction with the flywheel/LSM launch, this energy storage system reduces the coaster's power requirements to 125 KW and helps to further reduce operating costs.

• www.maurer-rides.com

Two of Maurer Rides' X-Car Coaster installations – Formule X at Holland's Drievliet Amusement Park and Freischütz at Germany's Bayern-Park – are being recognized for their power-saving propulsion and braking systems. Both use flywheel/LSM launch technology while Freischütz takes it a step further by recovering/storing energy produced by braking trains and re-using it for the next launch.

COURTESY MAURER RIDES



MAURER FLYING LAUNCH COASTER

MADE IN GERMANY

MAURER'S NEW LSM SYSTEM MARRIES THE LAUNCH AND THE MAGNETIC BREAK

Stop in the station or roar straight through for another round and double the ride from 500 meters to 1000 meters

»» But don't worry! Our marriage reduces costs by sharing the break and the launch with an environmentally friendly low cost power system. ««

www.maurer-rides.com

MAURER SÖHNE
forces in motion

Since 1876

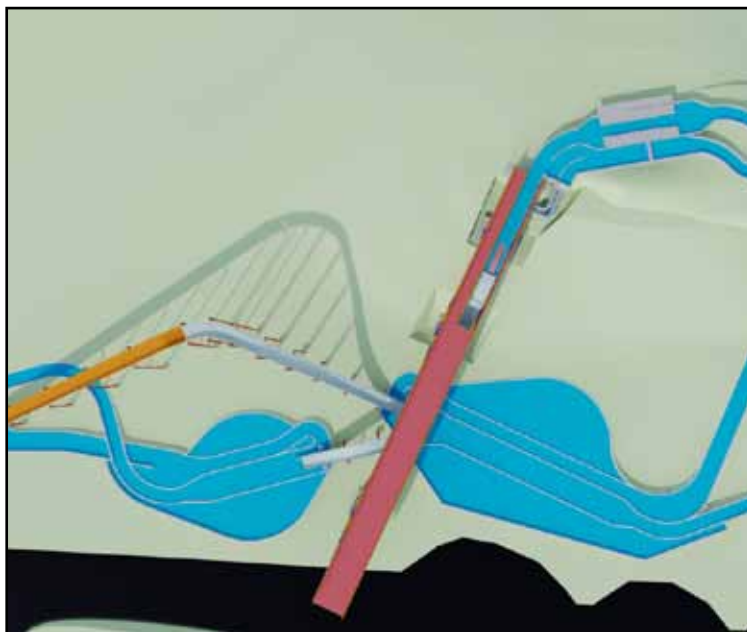
PowerPark to open Interlink super flume in 2013

Unique flume design will drop logs through and under a bridge

FINLAND — Interlink, the France/U.K.-based water ride specialist, has signed a contract to provide a new two-lift super flume ride to PowerPark in Finland for opening during the 2013 season.

After a very successful 2011, Interlink has started 2012 where it left off, with several new contracts already secured and a number of others for a variety of different attractions in the pipeline.

The latest project to be announced by the company is the design, manufacture and supply of a two-lift super flume for PowerPark, located in Härmä, Finland. The new ride will feature two lifts and two drops and will have an impressive overall circuit length of approximately 1,312 feet. It will utilize a total of nine, six-seat boats, providing a capacity of 600 passengers per hour.



Interlink will provide a new two-lift log flume for Finland's PowerPark for the 2013 season. Shown in the right photo, the attraction will sport a "Bridge over the river Kwai" theme. The ride will be 1,312 feet in length, use nine, six-seat boats providing a capacity of 600 passengers per hour. COURTESY INTERLINK

The ride will be situated in a new area of the park and will be integrated into an existing bridge structure, something which provided an additional challenge to the Interlink design team. The theme for the new attraction will be "Bridge

over the river Kwai." The sound track from the film of the same name will be used throughout the ride and not only will the bridge be a major theming backdrop but it will also be used as access to a new Thai restaurant. The bridge

will give visitors a view of the complete attraction.

"We've enjoyed a great deal of success with our log flume rides over the years," said Interlink Managing Director John Hudd, "and are naturally delighted that Pow-

erPark has chosen Interlink to provide them with such an attraction. It's been an interesting project to work on and to design and I'm sure it will be a very popular addition to the park when it opens in the summer."

ASIAN
Attractions
Expo

ASIAN ATTRACTIONS
EXPO HONG KONG
PLEASE VISIT US AT
BOOTH NO. 625

TURNING YOUR WORLD AROUND
SUSPENDED LOOPING COASTER

VEKOMA™
RIDES MANUFACTURING BY

SCHAAPWEG 18 6063 RA VLODDROP THE NETHERLANDS TEL +31 (0)475 409222 FAX +31 (0)475 402115 WWW.VEKOMA.COM

Asian Attractions Expo

Hong Kong • June 5-8, 2012 • Exhibitor Listing

3DME Photo Solutions.....	2320	Hankook Leisure	219	Rides and Fun Srl	332
9th CIAE (Guangzhou) Expo.....	2527	Haystack Dryers Limited.....	734	Ripley Entertainment Inc.....	2311
ABC Rides Switzerland.....	2105	Heege Freizeittechnik.....	2430	S&S Worldwide, Inc.....	601
Action Horizons Inc.....	130	Henan Hengtaihua Amusement Equipment Co., Ltd.....	1337	Sacoa Playcard System	2706
AECOM.....	2204	Herborner Pumps.....	705	Safari Challenge	2723
Aerodium Ltd.....	2713	Hindustan Amusement Machines Ltd.....	242	Sally Corporation	410
Aerophile SA	629	HKAAPA	2005	Sanderson Group International Pty Ltd.....	524
AFP Technology	236	Hopkins Rides, LLC	840	SAPIR.....	2217
AGRIC (Advanced Arcade Game Regional Innovation Center)	1040	Hot Games	2114	SBF Srl.....	1036
Alterface S.A.....	1028	HUSS Park Attractions GmbH	1107	ScooterBug, Inc.....	137
Amazing Interactives Limited	1231	Hytechnology, Inc.....	338	Sealy Electronic Technology Co., Ltd.	815
American Entertainment Group Limited	834	I.E. Park S.r.l./Amusement Rides & SOLI Bumper Cars.....	119	Sela Cars s.r.l.....	1343
American Locker Security Systems, Inc.	605	IAAPA Bookstore	2211	Semnox Debit Card System.....	2329
Amusement Today	IAAPA Central	IAAPA Central	2111	Severn-Lamb	306
Andamiro Co., Ltd.....	2621	IdeAttack, Inc.....	643	Shanghai KMS Lighting Mfg. Co. Ltd.....	2613
Animakitstudios.com.....	2624	Indian Association of Amusement Parks and Industr.....	2429	Shanghai Leaders Investment Management Company Limited	924
animalive	2618	Industrial Frigo SRL.....	243	Shanghai YGTH Entertainment Design Engineering Co.,Ltd.....	2411
Antonio Zamperla SPA.....	801	Intamin Amusement Rides Int. Corp. Est	325	Shenyang Chuangqi Amusement Equipment Co., Ltd.....	329
Aoqi Inflatables Limited.....	2725	Intercard, Inc.....	2416	Shenzhen Hill & Moon Park Gardening Co., Ltd.....	2015
ARC- World Skate Parks	2616	Interlink LG Ltd.	1136	Shenzhen Longri Landscape Co. Ltd.....	2523
Arihant Industrial Corp. Ltd.....	204	International Play Company, Inc.	312	Shenzhen Red Style Tourism Design & Construction Ltd.....	2530
Art Attack.....	2031	InterPark Magazine	129	Shenzhen Unite Art Co. Ltd.....	617
Asia Amusement Machine Co. Ltd.	2617	IREC Beijing Co., Ltd.....	337	Shenzhen Yuanwang Cocotop Technology Inc.....	2518
Attractions Audio Visual Ltd.....	131	IvanXTeam S.r.l.....	728	Showscan Entertainment	841
Australasian Leisure Management.....	2420	J & J Amusements, Inc.....	2122	Showtime Entertainment Productions.....	832
AUXEL S.r.L.....	313	Jack Rouse Associates	120	SimEx- Iwerks	719
B&B Exporting Ltd.....	2304	Jacobs Engineering UK Ltd.	1240	Simtec Systems GmbH	125
Barry Industrial Limited.....	2401	Jeff Ellis & Associates, Inc.....	114	Simuline Inc.	2301
Battlefield Sports	241	Jora Vision bv.....	731	Simworx Limited	141
Beijing Jiuhua Amusement Rides Manufacturing Co.,	709	Josef Wiegand GmbH & Co. KG.....	1143	Skafos International Limited	701
Beijing Shibaolai Amusement Equipment Co. Ltd.	2612	KB Creative Advisors Singapore PTE Ltd	2104	Sokol Show.....	611
Bertazzon 3B Srl.....	100	KCC Entertainment Design.....	437	Splashatacular, Inc.....	2221
Birket Engineering, Inc.....	140	Kingsmen Exhibits Pte Ltd.....	1000	Stretchmarks Asia Sdn Bhd.....	2717
Bob's Space Racers, Inc.....	429	Kodak (Hong Kong) Limited	735	Subway International B.V.....	712
Bolliger & Mabillard Consulting Engineers, Inc.....	205	Korea Game Cultural Industry Association.....	2718	Suzhou Fwu-Long Amusement Equipment Co., Ltd.....	613
Bombay Amusement Ride (P) Limited.....	310	K-River Amusement Co. Ltd	2720	Swiss Rides Ag	2205
Brunswick Bowling & Billiards Corporation	1140	Lagotronics Projects B.V.	808	Syndicate Printers Group.....	135
Carmi Flavor & Fragrance Co., Inc.....	1106	Lappset Group Ltd.....	1236	Tank Mobile Kiosks Limited	2011
Centaman.....	2422	LaserAnimation Sollinger GmbH	132	Technical Park S.R.L.....	115
Centro Digital Pictures Ltd.	2413	Laserforce International.....	635	Tecway Development Co. Ltd.....	1101
Chance Rides.....	2101	Laserservision Mega-Media PTE LTD	2607	Teddy Mountain Pte. Ltd	406
Cheer Amusement Equipment Corporation	109	LCI Projects Ltd.....	139	The Juice Brand Ltd.....	619
Chengdu Tailong Amusement Industry Co., Ltd	1014	Leisure Activities Co., LTD	315	The Producers Group.....	Sponsor
China Association of Amusement Parks and Attractio	2330	Leisure Entertainment Company.....	714	Theme Builders Philippines, Inc.....	804
CLM Entertainment.....	2110	Leisure Labs LLC	Sponsor	Themed Entertainment Association (TEA)	2414
Cloward H2O.....	233	LifeFormations	138	Theming and Animatronics Industries S.A.....	1114
Cogan S.R.L.....	214	Lockers.Com Pty Ltd.....	2116	Thinkwell Group.....	343
Concept International Design Ltd.....	232	Lo-Q plc.....	715	Tianjin Brother Tourist Train Co. Ltd.....	314
CORE Cashless, LLC	607	Mack Rides GmbH & Co. KG.....	2124	Trans-Force Ltd.	2509
Cosmic Animation Entertainment Sdn Bhd.....	1201	Magical Water Fountains	2606	Triotech Amusement Inc.....	807
Cypress Production House	2501	Mann Brothers	830	Triotech Amusement Inc.....	1006
d'strict	2724	Martin & Vlemincx Rides LLC.....	838	TUV SUD PSB PTE. LTD	2505
Daeseung Intercom Co. Ltd.....	2625	MAURER Rides GmbH	304	UK Trade and Investment	2201
Dalian Betop Multimedia Technology Co.Ltd.....	2603	Mirage Entertainment, Inc.....	2424	Universal Space Amusement (H.K) Ltd.....	1125
Delta Strike Laser Tag	237	Modern Masters, Inc.....	1141	Uremet Corp.....	2325
DigiPhoto Entertainment Imaging.....	1243	Mondial World of Rides	736	Van Egdom B.V.....	1206
Dominic Fun Rides PVT LTD.....	229	Moser's Rides S.r.l.....	1219	Vekoma Rides Manufacturing B.V.....	625
DongHo Electronics Co. Ltd.....	2619	MP Group.....	825	Veqtor	2120
Dotto S.r.l.....	319	Murphy's Waves Ltd.....	228	Viro	637
Dreampark International.....	704	Mustar Lighting Corporation.....	2323	Vlocker International Pty. Ltd.....	732
Dynamic Attractions and Dynamic Structures.....	810	Namco Bandai Games Inc.....	514	Vortex Aquatic Structures International Inc.	500
Dynamic Motion Rides GmbH	2315	Nane Design Corp. Ltd.....	2630	Water Park Toys, Inc.....	2415
ECA2	126	Neptune-Benson, Inc.....	433	Water Technology, Inc.....	814
eibe Produktion + Vertrieb GmbH & Co.	108	Nicco Parks and Resorts Ltd.....	1242	Waterplay Solutions Corp.....	104
Electrosonic Audio-Visual Technology (Shanghai) Co. Ltd.....	208	Nurburgring Automotive GmbH	2516	Waterslides de Mexico.....	1142
Embed International Pty. Ltd.....	1137	nWave Pictures S.A.	1024	Wave Loch, Inc.....	506
Emotion Media Factory Laserland GmbH	2130	Okamoto Mfg. Co., Ltd.	134	WEO Design Concept Limited	2421
Empex Watertoys.....	836	OKE Inc. Designs & Management	2631	WhiteWater West Industries Ltd.....	508
ETF Ride Systems.....	239	Old World Cone	2521	World Waterpark Association	739
Fabbri Group.....	201	OmniTicket Network (Singapore) Pte Ltd	307	Xtrem Aventures	1245
Facto Edizioni S.r.l.....	2423	OY C.E. Lindgren AB	730	Yuehua Token Company	633
Falcon's Treehouse, LLC.....	530	P&P Projects BV	328	Zebec, Inc.....	301
Forrec Ltd.....	1111	Park World Recreation Sdn Bhd	105	Zhejiang Guangqi Amusement Equipment CO.,LTD	2522
FotoSmile Pegaso Control System	311	Parkash Vikem Amusement Pvt. Ltd.....	333	Zhejiang Mich Playground Co., Ltd.	2506
Freij Entertainment	2703	Pax Company Ltd.....	213	Zhengzhou Wanle Amusement Equipment Co. Ltd.....	2517
Fun Amusement Lighting Co. Ltd.....	2730	Phoetron Corporation Limited	2716	Zhengzhou Wolong Amusement Equipment Co. Ltd.	1239
FUNA.....	142	Playfun Culture & Technology Co. Ltd.....	1237	Zhong Wei World Arts (Beijing) International Cultural Developing Co.	2023
Funplay S.r.l.....	2719	Playtime.....	2223	Ltd.....	2519
Galasys Technologies Sdn Bhd	1210	Polin.....	725	Zhongshan Desen Paper Co. Ltd.....	2519
Game Art (Hong Kong) Limited.....	1115	Polysoft Pty Limited.....	2324	Zhongshan Golden Dragon Amusement.....	1225
Game Plus Ltd.....	225	Precision Dynamics Corp.....	1212	Zhongshan Guang Yang Amusement Equipment Co., Ltd.	1214
Game Time International (GTI)	2331	Premier Rides, Inc.....	414	Zhongshan Jinying Amusement Equipment Co., Ltd.....	2520
Gary Goddard Entertainment.....	540	Premierworld Technology Limited	212	Zhongshan Junye Amusement Facility Supply Co. Ltd.....	2515
Gateway Ticketing Systems, Inc.....	1118	Preston & Barbieri S.r.l.....	1018	Zhongshan Kingbarth Animation and Amusement Equipment Co. Ltd.....	2524
GHESA Ingenieria y Tecnologia, S.A (BR Of Dubai)	209	Prime Play by Whitewater.....	608	Zhongshan Luck Amusement Co. Ltd	101
G-Look Amusement Machine Co., Ltd.	1119	Pro Forma Advisors LLC	112	Zhongshan Power Amusement Equipment Co. Ltd.....	2731
Gold Medal Products Co.....	240	Prominent Technology Enterprise Ltd, Funovation.....	2001	Zhongshan Xiaolan Ocean Fine Art Plastic Factory	2321
Golden Horse Amusement Equipment Co. Ltd.	1215	ProSlide Technology, Inc.....	1131	ZhuZhou CSR Special Equipment Technology Co. Ltd.	2622
Great Coasters International, Inc.....	2225	Ptarmigan Integration.....	143	Zierer Karussell- und Spezialmaschinenbau GmbH.....	833
Guangzhou Dalang Water Amusement Park Equipment Co. Ltd.	2425	Qubica AMF	708	Zigong City Dragon Culture & Arts Co., Ltd.....	2405
Guangzhou Haisan Entertainment Technology Co. Ltd.....	1339	Rand Productions.....	2229	Z'odd Design Sdn Bhd.....	1209
Guzzi Eugenio	1345	RDC/Ride Development Co.....	740	Zone Systems, Inc.....	336
Haining HongshiDa Industry Co. Ltd.....	2316	Redrover Co., Ltd.....	743		
Hangzhou Trains Equipment Co. Ltd.....	2721	Reka Setia Playground Sdn Bhd	215		

WE MAKE PEOPLE SMILE



➤ EXPLORE THE WORLD OF MACK RIDES



INNOVATIONS BUILT ON MORE THAN 230 YEARS OF TRADITION & EXPERIENCE

Start your journey through our wide range of innovative and exciting products and let us inspire you with high-detailed design and a great value for money.



➤ VISIT US ONLINE:
WWW.MACK-RIDES.COM
FACEBOOK.COM/MACKRIDES

230 years
MACK
RIDES GmbH & Co KG



PARKS & ATTRACTIONS

RIDES

ENTERTAINMENT

REVENUE

SUPPLIERS

B&M and Six Flags Great America team up again

STORY: Tim Baldwin
tbaldwin@amusementtoday.com

GURNEE, Ill. – Six Flags Great America has opened a new coaster supplied by Bolliger & Mabillard — for a fifth time. Dating back to 1990, the first coaster provided by B&M rose at the Illinois theme park giving a rise to the company’s career. Over the course of the two decades that followed, B&M would either introduce a new genre of coaster at Six Flags Great America or further a new breed in its early stages. In 1990 Iron Wolf was the first stand-up coaster for the firm. Batman The Ride, their first inverted coaster, debuted at Great America in 1992 and the innovative coaster concept would become one of the most prolific products in B&M’s catalog. In 1999, as B&M was



Above, this exclusive bird’s eye view shows X Flight’s compact layout. At left, Walter Bolliger, B&M, (inside seat with dark pants) takes a ride on his newest creation. Below, riders experience the keyhole maneuver. AT/GARY SLADE



introducing their hyper coasters, Six Flags Great America premiered an installation more akin to a twister, rather than the traditional out-and-back layout typically featured on a hyper coaster. This coaster was Raging Bull. One year following the introduction of the flying coaster in 2002 at its sister park in Georgia, Great America installed the second Superman Ultimate Flight in the United States.

Now in 2012, B&M has introduced their new wing coaster to North America. Only two have debuted in the States so far. Wild Eagle at Dollywood appeared in March (AT, May, page 1). Six Flags unleashed the second on May 16. X Flight has now become the fifth pairing between B&M and Great America. It seems to be a partnership draped in success.

“We have a tremendous working relationship with B&M and this project was no different,” says Dameon

▶ See X FLIGHT, page 12

Reporter's Notebook

Legoland Florida helps parents prepare kids for their first rides

WINTER HAVEN, Fla. — Legoland Florida has prepared a guide for parents to help children overcome their fear of thrill rides. Titled “Ready, Set, Rollercoaster!,” the guide is available online and at the front gate. The park consulted with nationally recognized psychologist and child development expert Susan Bartell to create the booklet that includes a list of “Roller Coaster Readiness” tips. The guide is aimed at reassuring young children who might be anxious about climbing aboard one of the park’s roller coasters for the first time.

Quoted

“We are very excited to be able to continue the successful operation of the Sooperdooperlooper by purchasing new trains from Gerstlauer.”

—Kathy Burrows, Hersheypark public relations manager on the new trains and other improvements made to the parks classic Sooperdooperlooper coaster



Intermark Ride Group

- abc rides switzerland
- Cogan Kiddie Rides
- Moser Rides
- Used Rides & Games
- Wattman Trains

www.intermarkridegroup.com
TEL 615.370.9625 FAX 615.370.8852

Creating Memories & Profitability



Voodoo Interactive Raft, abc rides



Hoopla, Moser Rides



Wattman Mini Express



While SeaWorld Orlando is being mum on revealing suppliers involved in creating their new Antarctica-Empire of the Penguin, one thing is for sure, the 2013 attraction is the park's largest expansion project ever.

COURTESY SEAWORLD ORLANDO

SeaWorld Orlando reveals plans for 2013 attraction: Antarctica - Empire of the Penguin

ORLANDO, Fla. — SeaWorld Orlando designers and marketing execs revealed a few details of the park's 2013 new attraction and its largest-ever expansion, Antarctica – Empire of the Penguin:

- The attraction will include a first-of-its-kind family adventure ride that utilizes new technology for an experience that can change from visit to visit. Designers also revealed that guests will be able to choose the level of thrill they experience on the ride. Each car seats eight guests.

- Guests will be introduced to a new SeaWorld star – a young gentoo penguin. The young gentoo becomes the ride's guide and leads guests on an exciting journey of the Antarctic.

- Antarctica – Empire of the Penguin will get SeaWorld's guests closer than ever (and out among) its colony of penguins including gentoos, rockhoppers, adelies and kings. How close has yet to be detailed.

- Immersing guests in a colony of penguins means the new ride will be the coldest theme park attraction in the world. Designers have declined comment on the engineering it will take to place SeaWorld guests among a colony of penguins whose habitat must stay in the low 30 degrees for comfort.

- The footprint for Antarctica – Empire of the Penguin is the biggest of any expansion at a SeaWorld or Busch Gardens park. Antarctica's scope includes the ride, penguin habitat, gift shop and restaurant.

► X FLIGHT

Continued from page 11

Nelson, operations director for Six Flags Great America. "Deliveries were on time, the support has been spectacular, and the ride has run flawlessly since the moment we had it ready to go. They are true professionals and we are proud to have such a great long term relationship with them."

The wing design of the coaster is sure to have spectator appeal as the broad vehicles demand attention on first view. The trains seat 32 passengers with riders divided equally stretching beyond both sides of the rails. Because X Flight riders are cantilevered to the sides of the track accentuating the coaster's articulations, repeat riders are sure to explore the various differences that each individual seat offers on such a ride.

"Not only do you have the sensation of riding on the wing of a plane with no track above you or below you, but all the added elements make it an amazing ride," beams Jennifer Dugan-Savage, communications manager for Great America. "Coming over the lift hill you have a fantastic view of the park, then the adrenaline rush sets in as you immediately flip into a dive drop. It is an incredible sensation."

Over the course of the experience, riders maneuver through five inversions along 3,000 feet of track at speeds up to 55 mph. "But the most exhilarating part of the track has to be speeding straight through the tower and yellowjacket A-Frame while in an in-line



Top left, Six Flags Great America's new X Flight wing coaster from B&M has a low level curve that highlights this water spray and fog thematic element of the ride. Above right, riders are suspended from each side of the steel rails, giving this new coaster technology a unique thrill all its own. AT/GARY SLADE



roll," reports Dugan-Savage. "You feel yourself ducking your head and lifting your feet at the same time." The close clearance illusion appears to be a ride highlight.

Theming plays a key role in the X Flight experience. The station is modeled after a military hangar and various thematic elements displayed about the ride enhance the aesthetics. Some of these added touches truly amp the "Wow factor" to a higher level. One of the lower curves skims just above the water where timed jets deliver a wing touch effect. Following the second inversion, the trains dive through a hangar facade. As reported, the one-two punch of traversing a keyhole maneuver through a control tower while completely sideways, followed by an in-line inversion through black and yellow A-frame structure with dramatic

fog misters while completely upside down is arguably the ride's crowning achievement.

With such impressive visuals, one could wonder the scope of the demographic involved for the ride. Park President Hank Salemi seems confident. "X Flight is a great complement to our already spectacular line-up of thrill rides," he says. "I was so pleased after riding it that it is thrilling enough for teens and adults but not so much so that it will turn off riders of all ages. It is the perfect balance."

John Odum, senior vice president planning and development, agrees. "It's a spectacular ride. It will appeal to all age groups." Odum adds, "The unique thing about this ride is where you sit. I tend to be a front seat kind of guy with the wind in my face, but the back seat is spectacular to me because the coaches are so

big that seeing the articulation is beyond belief."

At 120 feet, X Flight currently stands as the third tallest coaster at the park behind the towering Raging Bull and the adjacent American Eagle wooden racer. "This is our first major thrill ride since 2003," says Salemi, "and the market is extremely excited about it. We are hearing very positive news all over Chicago, Milwaukee and all of the upper Midwest."

Amusement Today talked with Walter Bolliger at the ride's media opening. When asked if he still gets excited each time he rides one of his coasters, Bolliger replied, "It is a thrill each time. You spend your time designing the ride, so you know what to expect, but it is always fun." He smiles, "If it is no longer fun, you should change your job."

FAST FACTS

Name/Park
X Flight/
Six Flags Great America

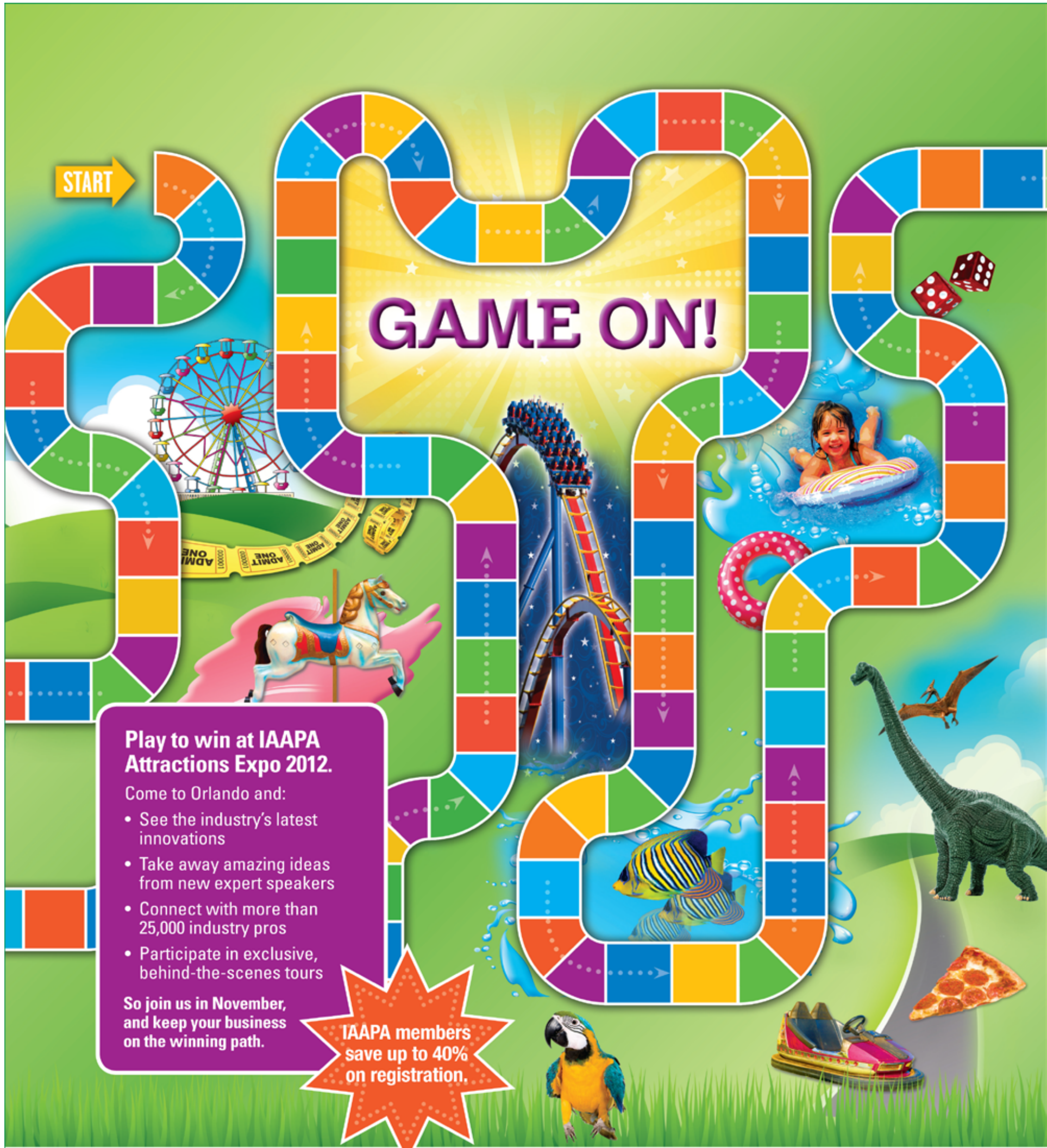
Type
Wing coaster

Height/Length/Speed
120 feet/3,000 feet/
55 mph

Trains
2 trains, 32 passengers
each train

Features

- Five inversions including: a dive drop (half loop), Immelmann & zero-g roll
- Keyhole maneuver accentuates close clearances while speeding through a control tower sideways



Play to win at IAAPA Attractions Expo 2012.
 Come to Orlando and:

- See the industry's latest innovations
- Take away amazing ideas from new expert speakers
- Connect with more than 25,000 industry pros
- Participate in exclusive, behind-the-scenes tours

So join us in November, and keep your business on the winning path.

IAAPA members save up to 40% on registration.

IAAPA Attractions Expo 2012 • Orlando, Florida USA
 Conference: November 12–16, 2012 | Trade Show: November 13–16, 2012
 Orange County Convention Center | North/South Building

Register by September 19 and save!
Visit IAAPA.org/IAAPAAttractionsExpo.



AMUSEMENT MARKET PLACE



North American Representative
Amusement Sales, Inc.

Texas Office: ▶ **Ride Sales**
 405 Dodson Lake Dr. ▶ **Replacement Parts**
 Arlington, TX 76012-3442 ▶ **Service**

Telephone: (817) 275-9393 • Fax: (817) 860-7373
 www.fabbrigroup.com • fabbrirides@sbcglobal.net

Aerial Tramway Design & Manufacture



SkyTrans Mfg., L.L.C.

106 Burnham Intervale Road
 Contoocook, N.H. 03229
 Phone: (603) 746-4446 Fax: (603) 746-4447

- Specializing in sales & refurbishment of used aerial tramways
- Replacement parts for aerial tramways and amusement rides
- New ride control systems and modifications
- Rebuilt used chairlifts - one year guarantee

Parts and Service (603) 746-4446
 Jerry Pendleton or Dan Pendleton

We offer a magnetic brake for any application. Whether it is a Tea Cup that needs to hold a little tighter, a Roller Coaster that needs to stop a lot smoother, or a Shoot-the-Chute that needs speed reduction, a magnetic retrofit offers motion control in custom applications.



EMG
 ENTERTAINMENT MANAGEMENT GROUP

We know that the maintenance budget is always under pressure from above, that is why we have made financing available for our magnetic brake projects. We can help spread payments out over a season so you pay for the brakes when your cash flow is the best.



Entertainment Management Group
 1-410-643-9300, ext. 303
 www.RideEntertainment.com

Structural Technologies Inc



*New Construction
 Renovations
 Daily Maintenance
 Relocations
 Track Replacement
 Demolition
 Inspections
 Emergency Work*

380 Bad Man Hill Rd. • Paxinos, Pa 17860
 (570) 590-3255 or (570) 590-9880
 STICoasters@yahoo.com



First reported on amusementtoday.com
 This artist's rendering gives a look as to what Speed The Ride will look like at its new home on Las Vegas Boulevard South. The ride is scheduled to re-open in 2013.
 COURTESY BRESLIN BROTHERS

Speed The Ride to get new home on the Las Vegas Strip

LAS VEGAS, Nev. — Portions of Speed The Ride roller coaster at the Sahara Hotel and Casino in Las Vegas, which operated for 11 years, are getting

relocated to a new location at the Akita Retail Center on Las Vegas Boulevard South, across from Mandalay Bay Hotel and Casino.

Breslin Builders is working with Premier Rides, to move the existing coaster from its present location, reusing as much of the ride as possible. The mid-section will be re-designed to work within and over the existing site and parking lot conditions, and allow for new and exciting curves and bends to be added to the ride. The original 224 foot vertical tower will be relocated and provide the reverse point for the coaster. Breslin Builders is providing design and associated engineering services for the site and coaster station.

Speed The Ride was closed in May 2011 along with the Sahara Hotel. Sahara owners SBE Entertainment who acquired the hotel-casino in 2007 said, at the time, that it was "no longer economically viable" to operate the nearly 60-year-old casino — one of the first on the strip. Since then SBE has announced a \$744 million planned renovation with a grand reopening scheduled for 2014, however, the existing coaster did not fit in with the vision for the re-designed hotel.

Although complete plans have yet to be announced, Akita Plaza is also home to the 500-foot SkyVue Ferris Wheel (see AT, April 2012, page 9) currently under construction. The coaster and Ferris Wheel along with restaurants and retail outlets are expected to open by summer 2013.

—Jeffrey Seifert



AMUSEMENT RIDE LIQUIDATION

Rides from Alabama Adventure

Sartori Convoy PM	\$4,000
S&S Space Shot PM	\$350,000
Zierer Wave Swinger PM	\$300,000
Eli Scrambler PM	\$17,500
CCI Wooden Coaster	\$300,000
Vekoma Boomerang PM	\$1.8 million
Bertazzon Music Express PM	\$275,000
Preston Crazy Dance PM	\$100,000
Skytrans Mfg. Shoot The Chute PM.....	\$1 million
Huss Pirate PM	\$100,000
Betazzon Kid Bumper Car PM	\$60,000
Chance 50' Grand Carousel PM	SOLD
Arrow Log Flume (boats & mechanicals).....	\$22,500
Family Raft Ride (boats & mechanicals).....	\$35,000
2000 Fabbri Jungle Drop.....	\$250,000
7-car Open Looping Coaster Train.....	\$100,000

Superior Equipment Services LLC
 Larry Moyers • (865) 977-7294
 www.amusementridesales.com

Keep our amusement park industry strong!
 Buy products and services from these suppliers.



Jumping Jumbos



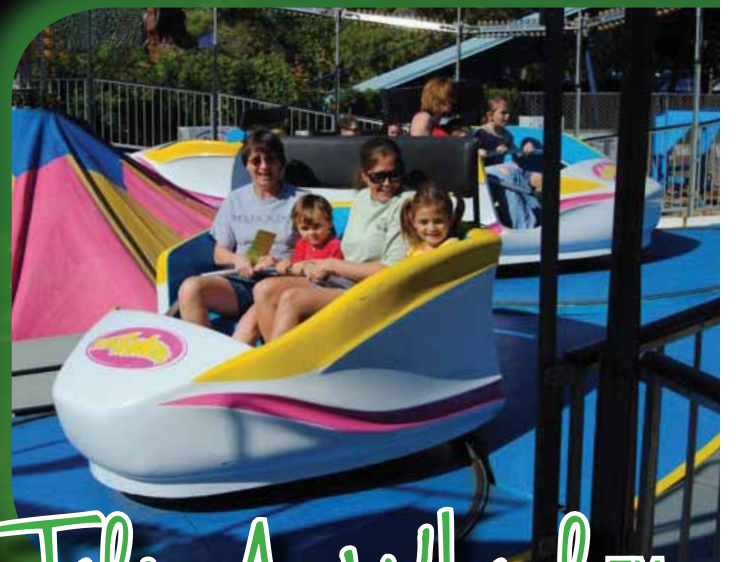
Flying Scooters™



PO BOX 638 • Plainview, Texas 79072
(806) 293-1353 • www.larsonintl.com



Super Shot



Tilt-A-Whirl™

Hersheypark's Schwarzkopf coaster receives new trains, upgrades for 2012

Loop coaster receives Gerstlauer trains, Velocity Magnetics braking and Geering Engineering controls

STORY: Scott Rutherford
srutherford@amusementtoday.com

HERSHEY, Pa. — Keeping a classic roller coaster in top operating condition requires persistence and a dogged determination. While some parks elect to retire a ride when they feel it has reached the end its operating life, others strive to do whatever it takes to keep a beloved attraction running for the next generation of thrill seekers. Hersheypark falls into the latter category this season with the purchase of new rolling stock and other improvements for its classic Sooperdooperlooper (SDL) steel coaster, which is celebrating its 35th anniversary in 2012.

Opened in 1977 as the east coast's first modern looping coaster, the SDL was a product of Anton Schwarzkopf and Werner Stengel. Unlike its sister coaster, the Revolution at Six Flags Magic Mountain, which has been unfortunately

FIRST REPORTED ON
amusementtoday.com

modified with cumbersome and much disliked over-the-shoulder restraints, SDL has continuously operated as its manufacturer intended.

The most obvious aspect of the SDL's 2012 enhancements are the ride's two new six-car trains. This set — the coaster's third — was supplied by Gerstlauer Amusement Rides GmbH. This is quite fitting since Gerstlauer is comprised of several former Schwarzkopf employees that utilize the same factory in Münsterhausen, Germany.

"Sooperdooperlooper continues to be one of the most popular rides at Hersheypark. We are very excited to be able to continue the successful operation of the Sooperdooperlooper by purchasing new trains from Gerstlauer," said Kathy Burrows, the park's public relations manager. "Adam Sandy with Ride Entertainment Group has been most helpful in facilitating this project between Hersheypark and Gerstlauer.

The two new trains, each



For Sooperdooperlooper's 35th anniversary, Hersheypark turned to Germany's Gerstlauer Amusement Rides GmbH to supply two new Schwarzkopf-inspired trains. Additionally, the 1977-built looping coaster received magnetic brakes from Velocity Magnetics and new control system by Geering Engineering. COURTESY REG / HERSHEY PARK

painted a vibrant orange with silver stripes, look and operate like the original rolling stock. Coaster enthusiasts are rejoicing over the fact that the new trains utilize only ratcheting lap bars (no seat belts) as Schwarzkopf originally prescribed.

In addition to the new trains, the SDL was outfitted with a new control and braking system. "We have installed new magnetic brakes from Velocity Magnetics as well as up-

dated the ride's control system with work being done by Geering Engineering [of Zurich, Switzerland]," added Burrows. "Again, Ride Entertainment Group is assisting with coordination between Hersheypark and Velocity and Geering."

Incidentally, one of the old SDL trains (originally built by Switzerland's Giovanola) has been donated to the National Roller Coaster Museum and Archives (NRCMA), a repository for amusement industry

artifacts headquartered in Plainview, Texas. The donated train was delivered in early May.

"I would like to thank Hersheypark for their generous donation. The Schwarzkopf train is a treasure for our rapidly growing collection," said NRCMA Chairman Gary Slade. "Add the fact the great condition that Hersheypark keeps their ride equipment in and we have something that is as near showroom ready as it can be."

SeaWorld Orlando opens all-new TurtleTrek

ORLANDO, Fla. — TurtleTrek, SeaWorld Orlando's newest attraction, comes to life with SeaWorld's unique blend of up-close encounters with manatees and sea turtles and state-of-the-art entertainment, making for a real adventure and a first-of-its-kind 3D 360-degree dome theater film that is completely surrounding and immersive.

Guests first visit two massive naturalistic habitats, home to gentle manatees and gliding sea turtles, learning what makes each species so precious. They then enter a domed theater and what happens next has never before been seen and is a first at any theme park in the world.

Inside the dome, they are surrounded by a hyper-realistic, 3D 360-degree film that takes them on the amazing life journey of a special sea turtle named Nyah. The experience is all around guests and even above them — not just in front of them or only on one screen. It's this all-new and immersive way of showcasing a sea



TurtleTrek, SeaWorld Orlando's newest attraction offers a unique blend of up-close encounters with manatees and sea turtles and state-of-the-art entertainment in a unique 3D 360-degree dome theater. COURTESY SEAWORLD ORLANDO

turtle's epic adventure that is the heart of TurtleTrek.

TurtleTrek is as inspirational as it is astounding. There's a call-to-action at the end of the experience: SeaWorld urges guests to join in conserving the world we share. "Do a little, do a lot, but join us and do something

to help the world and its animals," said Brian Morrow, the attraction's chief designer. "TurtleTrek is about the everyday heroes who can make a difference in nature."

TurtleTrek also offers the fun (and educational) "Race for the Beach" video game that plays out on massive video

screens at the new attraction. And TurtleTrek's gift shop is unique in the way it continues the attraction's inspiration and guests will see exactly how a portion of each dollar spent benefits in-the-field research to help save animals.

Starting at TurtleTrek, SeaWorld and all its parks are

eliminating plastic gift bags within the next year. SeaWorld Parks & Entertainment will be the largest theme park operator to make this commitment. The eco-friendly move will save an estimated four million plastic bags per year from both entering landfills and impacting wildlife.

Need Track Repairs?

RMC is known for providing quality timely repairs. Repairs can be completed using a traditional wood track or our new Patent Pending Steel Topper Track. Our Topper Track comes with a 5 year warranty, which is unheard of in the coaster industry.



RMC

Repair and improve your wood coasters.

WE BUILD DREAMS

PATENT PENDING

208.772.8181

rockymtnconstruction.com

rmcgroup@live.com

photos courtesy of amusement today

Universal Orlando Resort unveils Hollywood Drive-In Golf

ORLANDO, Fla. — Universal Orlando Resort has officially opened central Florida's newest and most outrageously-themed miniature golf experience – Hollywood Drive-In Golf at Universal CityWalk.

Featuring two 18-hole courses based on classic drive-in era horror and sci-fi movies, this all-new venue is the only place where the entire family can enjoy teeing off through the open mouth of a giant space worm or the basement laboratory of a towering haunted house.

To celebrate the grand opening, some of Universal Orlando's iconic characters made an appearance. Universal's classic monsters — Dracula, Wolfman, Frankenstein's Monster and the Bride of Frankenstein — putted their way through a creepy cemetery on "The Haunting of Ghostly Greens" course. On the opposite side, Men In Black agents and Frank the Pug played "Invaders from Planet Putt" — a course themed after the "little green men" science fiction films of the 1950s.

Designed by Universal's Creative team in partnership with Adventure Golf Design and Development, Hollywood Drive-In Golf is open to the public daily from 8 a.m. to 2 a.m.

• www.CityWalkOrlando.com



Recently opened at Universal Orlando Resort, Hollywood Drive-In Golf at Universal CityWalk offers two 18-hole courses based on classic drive-in era horror and sci-fi movies. Men In Black agents and Frank the Pug (shown here) played "Invaders from Planet Putt" — a course themed after the 'little green men' in science fiction films of the 1950s.

COURTESY UNIVERSAL ORLANDO

Universal's Superstar Parade debuts



On May 5, 2012, Universal Orlando Resort surprised guests with a first look at Universal's Superstar Parade — one of the largest interactive experiences the theme park has ever created. The daily parade will feature elaborately-themed floats that tower above guests, hundreds of energetic street performers and spectacular music and dance performances. The all-new parade's grand opening was held on May 8, along with Universal's Cinematic Spectacular, a new nighttime show that unfolds across Universal's central lagoon, taking guests on a journey filled with powerful movie moments.

COURTESY UNIVERSAL ORLANDO

WILLIAM H. ROBINSON, INC.

The
B!g idea
People!

*CREATIVE MARKETING
TV COMMERCIALS
JINGLES
BROCHURES & ARTWORK
PHOTOGRAPHY
INTERNET SOLUTIONS
PROMOTIONS
GROUP SALES TRAINING
& MORE!*

A Creative Services Company Serving the Amusement, Water Park & Support Industry for over 50 Years!

1428 Maple Ave. • Hamilton, OH 45011 • 513.737.9012 • www.TheBigIdeaPeople.com

Kings Island's 40 years of success started with 1972 opening

STORY: Jeffrey L. Seifert
jseifert@amusementtoday.com

MASON, Ohio — The success of Disneyland in 1955 led to a new genre of amusement park — the regional theme park. Wanting to capitalize on the success of Disney, a number of companies and organizations built this new style of park in various locations throughout the country. Some, such as Six Flags, were immediately successful. Others, like Freedomland U.S.A. were financial failures. Nonetheless, these new theme parks were added to the landscape throughout the 1960s and 1970s and they attracted a number of different investors. Among them was the Taft Broadcasting Company (Taft), a Cincinnati-based media conglomerate who had recently purchased Hanna-Barbera Productions, one of the first animation studios to successfully produce cartoons primarily for television. Taft was looking for ways to create a Disney-like park with its Hanna-Barbera cartoon characters such as the Flintstones, Yogi Bear, Scooby-Doo and the Jetsons.



Above, Kings Island's logo from 1972 park brochure. Below, this year's 40th anniversary logo.



astating. By 1964 the park was looking at alternative locations.

building two coasters in 1968. He refused at first, indicating he was wanting to retire. Allen had also been asked by the general manager of Six Flags Over Georgia to construct a large coaster there, but Angus G. Wynne, Jr., then CEO and president of the Six Flags Corporation was against having a wood coaster at any of his theme parks. John Allen finally agreed to build a new coaster with the understanding that Curtis D. Summers would provide assistance with the structural engineering. Summers began his career in the amusement industry when he was contracted by Coney Island to provide structural repairs to the park's Shooting Star roller coaster. He continued to work with Coney to keep the park's two wooden coasters structurally sound.

New park icon selected

Taft was also looking for an iconic landmark for their new park. Legends surrounding the choice of an Eiffel Tower conflict, with one suggesting that Intamin A.G. of Switzerland had developed a "Paris Tower" **▶ See KI 40th, page 21**



Top photo: Pre-construction artist rendering for Kings Island's new International Street. Above: Kings Island as seen on opening day in 1972 with landmark tower, The Racer and children's area. COURTESY ITPS ARCHIVES

Coney Island

Coney Island was an amusement park located on the banks of the Ohio River, about 10 miles from Cincinnati. The park dates back to the early 1870s when James Parker, an apple grower, realized his orchard on the banks of the river was a pleasant place to visit and spend time. He eventually added a dining hall, dancing hall, bowling alley and mule-powered carousel. In 1886 he sold the land and the name was changed to "Ohio Grove, The Coney Island of the West," and the new park opened on June 21, 1886. The following year, "Ohio Grove" was dropped from the name and the park became known simply as Coney Island.

In 1924, ownership transferred to Coney Island Inc., a corporation headed by George Schott and Ralph Wachs. The park continued to grow and thrive, and over the decades Coney expanded into a full-fledged amusement park that included two large wooden coasters designed by Herbert Schmeck of PTC. Its riverside location however, turned out to be more of a bane than an asset, as the park would suffer from floods every few years, some of which were quite dev-

Taft acquires Coney

In late 1968 plans surfaced for a new theme park in Northern Kentucky, and the Wachs family realized if Coney Island was to survive they needed a well-capitalized partner. During negotiations, Taft made an offer to purchase the park outright and the acquisition was completed in July 1969. Soon afterward, Taft announced the procurement of 1,600 acres of land 24 miles northeast of Cincinnati in what was then Deerfield Township. The plan was to close Coney Island at the end of the 1971 season, and open a brand-new theme park the following year.

Approximately 150 acres was developed for the park. Included with the theme park was a large hotel and conference center, a campground and a golf course. Most of Coney's rides and attractions were in good shape, and the plan was to move them to the new park at the end of the 1971 season.

The park's wooden roller coasters, however, were deemed too old and fragile. Taft decided that a traditional wooden coaster would be appropriate for the Coney Island section of the park. They contacted PTC and president John Allen, who had just finished



Clockwise from top left: Grand Opening ceremonies included (l to r) Ralph Wachs, Dudley Taft, Charles Mechem and Earl Wilson standing at podium; taking a walk in the opening day parade were Mr. & Mrs. Earl Wilson followed by Joe Barbera, Hanna Barbera Studios president; The Banana Splits were a key figure in the early years of the park. COURTESY ITPS ARCHIVES



Kings Island: A look year-by-year

•**1970:** On June 15, 1970, the Taft Broadcasting Company broke ground and began the construction of Kings Island.

•**1971:** Construction of the Eiffel Tower, Royal Fountain and Racer roller coaster were completed by early fall. By Thanksgiving, rides and attractions had been transported and installed from Coney Island, including the Dodgem, Scrambler, Monster, Rotor, Log Flume, Sky Ride, Tumblebug and Flying Scooters.

•**1972:** After two years of construction, Kings Island opened to public April 29, 1972.

•**1973:** Three rides were added - the Flying Dutchman, the Bayern Kurve, and a second log flume as part of a \$6 million expansion.

•**1974:** A fifth themed area was added this year - the 100 acre Lion Country Safari (later known as Wild Animal Habitat).

•**1975:** Additions to the park included the Zodiac, an unusual two-armed Ferris wheel, and the world's largest floral hanging basket weighing in at approximately eight tons.

•**1976:** Following the collapse of the park's air theatre from a heavy snow storm, the imposing American Heritage Music Hall (now known as Kings Island Theater) was erected at a cost of \$1.8 million. The Racer gives 3,681,338 rides in one season.

•**1977:** The Arrow-built Screamin' Demon opened, becoming one of the first steel looping coaster in the U.S. to run both forward and backward. The 1,700-seat outdoor International Showplace Theater opens.

•**1978:** The College Football Hall of Fame joined the Kings Island complex.

•**1979:** Three years in the making by park personnel, The Beast opens setting a new standard for roller coasters throughout the world. The Beast continues to be listed in the Guinness Book of World Records as the longest wooden roller coaster.

•**1980:** A number of improvements were made to the Beast this year, including re-banking parts of the track, enclosing the 540-degree helix-turn, and joining the other two main tunnels.

•**1981:** The \$3.8 million Bat, an Arrow prototype sus-

pending roller coaster, debuts. Although the Bat was popular with guests, it was dismantled and removed in 1984 due to mechanical difficulties.

•**1982:** The Viking Fury swinging ship debuts along with a \$2.1 million expansion renovation of Hanna-Barbera Land. The 10,000-seat TimberWolf Amphitheatre opens and Winterfest debuts.

•**1983:** In 1983 the German Festhaus features live entertainment and international food selections.

•**1984:** King Cobra, a stand-up, steel looping roller coaster from Togo debuts. The Smurfs cartoon characters arrive.

•**1985:** White Water Canyon, a \$4 million Intamin rapid river ride, led the park to a then-record attendance high of 2,981,861 visitors.

•**1986:** Coney Island section is expanded with the additions of the 90-foot-high wheel called Skylab, the Zephyr swing ride, and refurbishment of the Dodgem bumper cars. A Cinema 180 Theatre was also added at the end of Coney Mall.

•**1987:** The Arrow-built Vortex, a \$4 million roller coaster turned riders upside down six times. Park attendance surpasses 3 million.

•**1988:** Intamin Amazon Falls chutes ride added.

•**1989:** Waterworks, a new 12-acre, \$4.2 million waterpark opens; specially priced two-day ticket is introduced.

•**1990:** Intamin Flight Commander debuts.

•**1991:** Arrow Adventure Express mine train is introduced.

•**1992:** New haunted ride from Morgan, the Phantom Theatre debuts. In August, Paramount Communications, Inc. purchased Kings Island and KECO to form Paramount Parks.

•**1993:** Arrow Top Gun suspended roller coaster debuts.

•**1994:** Days of Thunder racing simulator opens in Coney Mall between the Racer's turnaround.

•**1995:** Nickelodeon Splat City explodes onto the scene, introducing green slime as a new brand of messy fun; Sky-coaster opens.

•**1996:** The world's first Linear Induction Motor (LIM)

launch roller coaster (Premier Rides), Flight of Fear, opens.

•**1997:** WaterWorks increases in size to 15 acres.

•**1998:** Hanna-Barbera Land gets rethemed.

•**1999:** Vekoma Face/Off inverted looping roller coaster and the Intamin Drop Zone Stunt Tower open.

•**2000:** Son of Beast is introduced as world's only looping wooden roller coaster. FearFest debuts as the first Halloween event in the park's history.

•**2001:** Areas of Rivertown and Hanna-Barbera Land are re-themed into Nickelodeon Central.

•**2002:** Huss Tomb Raider: The Ride, a heavily-themed, totally immersive dark thrill ride adventure opens.

•**2003:** Scooby-Doo and the Haunted Castle, Delirium (Huss Giant Frisbee) and SpongeBob SquarePants 3-D debut.

•**2004:** The Beast celebrates its 25th anniversary season.

•**2005:** The Italian Job: Stunt Track (Premier Rides) opens as a new, fully themed action stunt car roller coaster experience.

•**2006:** Three kids rides added include Avatar: The Last Airbender, Phantom Flyers and Plankton's Plunge. On June 30, Cedar Fair Entertainment Co. purchases Paramount Parks from CBS Corporation for \$1.25 billion.

•**2007:** Vekoma Firehawk flying coaster debuts.

•**2008:** The Kings Island Hall of Fame was created to honor park associates who made extraordinary contributions during years of service at the park, or have distinguished themselves in some way that makes them worthy to receive this honor. Carmen Electra, Dennis Spiegel and Janeen Coyle comprise the inaugural class of inductees.

•**2009:** Massive \$22 million Diamondback (B&M) is introduced.

•**2010:** Kids area rethemed to Planet Snoopy.

•**2011:** WindSeeker, a \$5 million, 301-foot tall tower ride from Mondial and Dinosaurs Alive! make debut.

•**2012:** Soak City, a \$10 million expansion of the park's existing waterpark, highlights Kings Island's 40th anniversary season.



►KI 40th

Continued from page 19

for Six Flags Over Texas, but Wynne rejected it, deciding instead to build a 300-foot-tall Oil Derrick. Intamin presented the Paris Tower to Taft, who decided the one-third replica of Paris' famous Eiffel Tower would be the centerpiece of the International section of the park. Another story has Gary Wachs (son of Ralph Wachs) coming up with the idea for an Eiffel Tower replica after a visit to Paris.

Construction began on June 15, 1970, and by the close of the 1971 season, most of the infrastructure was in place and the park was ready for an influx of rides from Coney Island. Along with the rides came some of the famous Ginkgo trees from Coney's main mall. The trees were transplanted in the new Coney Island section of the park.

A naming contest was held and the most popular name submitted was Kings Island, borrowing from the name Kings Mills, an unincorporated community within Deerfield Township in which the land for new park was lo-

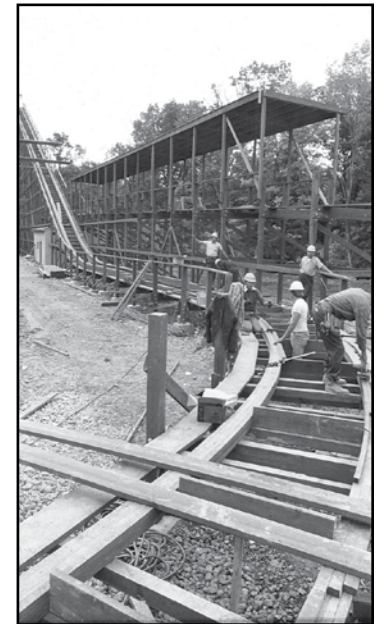
cated, and the original Coney Island.

Kings Island opens

Kings Island held several preview events with the first taking place on April 29, 1972. The park officially opened to the public almost a month later on May 27, the start of the Memorial Day weekend.

The park offered 65 attractions that first year in four themed areas: International Street, Coney Island, Rivertown and the Happy Land of Hanna Barbera. Stepping through the turnstiles, guests were greeted with a large entrance mall, lined with shops and highlighted by the Royal Fountains, a large 60,000 gallon rectangular fountain with multiple spray heads producing a variety of ever-changing water plumes.

Several major attractions included the 330-foot Eiffel Tower, and the Kings Mill Log Flume that had been relocated from Coney Island. Costing \$2 million to build, the Enchanted Voyage dark ride was the most expensive ride in the park; it took guests on a journey through several rooms populated with old and new Hanna-Barbera characters. The Kings Island & Miami Valley Rail-



Left to right: Construction of Kings Island took two years, 1970-1972, before opening on April 29, 1972; the park's icon Eiffel Tower as seen under construction in May 1971 and when the legendary Beast wooden coaster debuted in April, 1979 it broke all records for any roller coaster on the planet. COURTESY KINGS ISLAND

road features two Crown Metal Products locomotives that are 36-inch gauge scale replicas of the famous 1800s locomotive know as The General. The 1.1-mile narrated trek included scenes from the frontier days of the Ohio Valley. The Racer was the first twin-tracked wooden roller coaster to be built in the U.S. in 35 years. Its massive structure spanned the length of the Coney Island section of the

park.

A record 2,012,000 guests visited Kings Island in the first season of operation, making it one of the most successful opening years in the history of theme parks.

But Taft didn't stop there. The media conglomerate took advantage of its television connections to promote the park. Two of TV's most popular sitcom families, the Partridges

and the Brady Bunch spent a day at the park enjoying the rides. The Partridge Family episode "I Left my Heart in Cincinnati" aired on January 26, 1973, and the Brady Bunch "The Cincinnati Kids" aired on November 23, 1973. Both episodes thrust Kings Island into the national spotlight bringing fame and recognition to the new theme park.

► See KI 40th, page 22

Congratulations Kings Island!

Over 40 years ago, I was personally fortunate to be a part of developing one of the world's finest theme parks, Kings Island.

Since opening in 1972, it is estimated that over 120 million people have visited, enjoyed, and made wonderful memories at Kings Island.

Dennis L. Speigel, President – ITPS

At ITPS...Fun is a SERIOUS Business!

Feasibility Analysis | Design | Management | Acquisitions
 Mergers | Financial Advisory | Operations Planning | Business Plans
 Ride Procurement | Due Diligence | On-Site Training
 Manual Development | Marketing Plans | Sponsorship
 Industry Research | Revitalization Planning

International Theme Park Services, Inc.
 2195 Victory Parkway
 Cincinnati, Ohio 45206
 Phone: 513-381-6131
<http://www.interthemepark.com>
itps@interthemepark.com

►KI 40th

Continued from page 21

Taft adds more parks

Kings Island's continued success led Taft to the development and acquisition of additional theme parks. Kings Dominion, a park similar to Kings Island opened in Doswell, Virginia in 1975. Taft then purchased the two-year-old Carowinds Park in North and South Carolina later that same year. After many years of planning, Canada's Wonderland, north of Toronto, opened in 1981 as a joint venture between Taft and the Great-West Life Assurance Company.

The Beast makes record-setting debut

Just half a decade into Kings Island's existence, Taft was looking to bring even more recognition into the park. Led by resident engineer Al Collins and Jeffrey Gramke, a team was assembled to build a new roller coaster in the natural hills and valleys near the Rivertown section of the park. The instructions from Taft — break all the records. Two years later on a cold, rainy, Friday the 13th of April, The Beast, the world's longest, tallest and fastest wooden roller coaster was unveiled. The ride became famous nationwide, and is still perhaps one of the most well-known coasters in the world.

Merry-Go-Round of multiple ownerships begin

In 1984 a group of senior executives and general managers of Taft's amusement park group acquired the theme park division for \$167.5 million in a leveraged buyout, and a new entity, Kings Entertainment Company (KECO), was formed. 1984 also saw the opening of Hanna-Barbera Land in Spring, Texas, outside of Houston. The following year Australia's Wonderland opened in Sydney, also a joint venture similar to the arrangement in Canada. KECO also contracted with the City of Santa Clara, California, to manage the Great America park which the city had acquired from the Marriott Corporation. The leveraged buyout took its toll on finances however and in 1987, Kings Island was sold to Cincinnati-based American Financial Corporation. KECO continued to manage the park.

Although the theme parks continued to thrive, Hanna-Barbera Land lasted only two years. Kings Island and the rest of the KECO-controlled parks

continued to expand with Kings Island adding several notable attractions over the years. Then on July 31, 1992, in the middle of Kings Island's 20th anniversary celebration, KECO was sold to Paramount Communication for \$400 million, the deal also included the sale of Kings Island by American Financial Corporation.

When Kings Island opened in 1993 it had a new name — Paramount's Kings Island, and a new tagline "Where the Magic of Movies Meets the Thrills of a Lifetime!" Paramount added characters and themes to the park based on its vast repertoire of movies and television shows. Along with a new logo and new name was a new coaster, Top Gun, themed to the popular 1986 movie. The Paramount tie-ins continued over the next 14 years, with many major rides built during that time having some type of movie theme.

Paramount Communications also changed hands a few times merging with Viacom in 1993. That merger brought the Nickelodeon properties to the park. In 1999 Viacom merged again with the CBS corporation, though little was changed in the way of theming. Paramount's Kings Island continued to grow and expand adding another record-breaking wooden coaster in 2000.

Meanwhile, back in New York City, Viacom was dealing with a stagnating stock price and Viacom's board approved a split of CBS and Viacom in June 2005, effectively undoing the 1999 merger. The CBS Corporation was given Paramount Parks which they put up for sale. Sealed bids were accepted from several companies including the former executives of KECO. In the end the Paramount Parks company was awarded to rival park operator Cedar Fair Entertainment Company which had grown over the last 30 years into a multi-billion dollar company. The sale price was a staggering \$1.24 billion and took effect June 30, 2006.

When the park opened for the 2007 season, it used its original name, Kings Island, and all of the movie theming was removed from the park. No longer having access to licensed properties, several of the park's major attractions had to be renamed. The Nickelodeon-themed kids section remained through the 2009 season, replaced by Cedar Fair's licensed Peanuts characters in 2010. In 2009 Cedar Fair installed Diamondback, a large steel hyper



Top photo: Kings Island and The Racer as seen today. Second row from left, the new Diamondback steel roller coaster and the Kite Eating Tree provide thrills for all age groups. Bottom two photos show Kings Island at it best from a great ride on a log flume, to the challenge and fun of the arcade.

AT FILE/GARY SLADE & TIM BALDWIN



coaster. This genre was introduced by Cedar Point in 1989 and has been installed in almost every Cedar Fair-owned park.

Like so many theme parks of the last few decades, Kings Island saw its share of ownership changes with each pulling the park in a different direction and each leaving an indelible mark behind. But through it all the park has endured.

Though Yogi and Fred are long gone along with many of the attractions from that opening year, much still remains: The Eiffel Tower, the Racer, The Scooby Doo coaster (now Woodstock Express), the Kings Island Railroad, log flume, Grand Carousel, and the Royal Fountains. Since that grand opening in 1972 more than 120 million visitors have experienced the park's world-class rides, shows and attractions. Through its media tie-ins and record-breaking rides Kings Island has likely been in the limelight more than any other park outside of Disney.

Congratulations to Kings Island on 40 spectacular years. *Amusement Today* wishes the park all the best this year and for many more decades to come.





WATERPARKS & RESORTS

INDOOR FACILITIES

AQUATIC CENTERS

RECREATION

SUPPLIERS

Reporter's Notebook

City of Vista, Calif. may cut subsidy to the Wave Waterpark

VISTA, Calif. — The city of Vista is looking for ways to trim the city budget. One possible cut is an annual subsidy to the city-owned Wave Waterpark. Depending on the weather, the subsidies can fluctuate from \$450,000 to more than \$800,000 per year. Cooler summers mean fewer customers and less revenue. While the anticipated sales tax is showing an increase of \$900,000, it is not enough to offset a drop of \$1.1 million in the anticipated property tax revenue. The Wave Waterpark is scheduled to open this summer, but beyond that will depend on the decisions made by the city council.

Two new waterparks still in planning stages for Las Vegas, area

LAS VEGAS, Nev. — Las Vegas metro area is still on track for two new waterparks in 2013. As previously announced, Splash Canyon delayed its opening from Memorial Day 2012 but is on track for a 2013 opening. Meanwhile the developer of a second project in Henderson, to the west of the strip, has secured funding and plans to close on the property in July and break ground in August.

Hurricane Alley makes landfall in Corpus Christi, Texas

Innovative Leisure Partners oversees \$10 million project

STORY: Jeffrey L. Seifert
jseifert@amusementtoday.com

CORPUS CHRISTI, Texas — After three years of planning, Hurricane Alley opened its gates in time for Mothers' Day. Several hundred people visited the park for the first time on May 13, and enjoyed the six-story water slides, racing slides, lazy river or the 12,000-square foot wave pool at the brand-new, \$10 million, eight-acre park.



The soft opening was kept low key with the park open on weekends only from 10 a.m. to 6 p.m. Although all the attractions are fully operational, cosmetic touchups and additional landscaping will be added to the park over the next few weeks. A formal grand opening was scheduled for Memorial Day weekend and the park will then be open seven days a week through Labor Day.

CEO Chuck Hendrix with Innovative Leisure Partners of Houston met with Mayor Joe Adame July 4, 2009, to discuss development plans for a new waterpark for the city. Corpus Christi native Bill Durrill of Durrill Properties was the driving force behind the development of the new park.

After working a deal to secure

▶ See HURRICANE, page 24



Hurricane Alley's opening day team includes l to r: Bill Durrill, park owner; Jim Kunau, assistant general manager; Bob Logan, general manager; Ashley Higson, public relations manager; Chuck Hendrix, CEO of Innovative Leisure Partners (project managers); Sandy Anderwald and Larry Anderwald, both co-owners of TurnKey Catering (concessions leasee). AT/GARY SLADE



The original concept for Hurricane Alley began with a meeting on July 4, 2009 between Corpus Christi Mayor Joe Adame and Innovative Leisure Partners CEO Chuck Hendrix. The \$10 million park became a reality when the gates opened to the public on May 13 for a soft opening with the grand opening set for Memorial Day weekend. AT/GARY SLADE

The Waterslide World of Tomorrow!

New for 2012



MAGIC SPHERE

SPHERES



Polin[®]
WATERPARKS & POOL SYSTEMS

www.polin.com.tr

► HURRICANE

Continued from page 23

property, then drawing up a design and engineering plan, an announcement was made July, 2011, and ground was broken in August. The property is on the site of an old cotton warehouse. Much of the original warehouse structure was preserved and repurposed, now serving as space for a gift shop, offices, men's and women's locker rooms and a large, covered area that houses rental lockers.

Although the site offered some benefits in the way of existing structures, it created some unforeseen problems as well. As excavation began for the pool, lazy river and slide footings, buried concrete was discovered that required removal, increasing the amount of time needed for installation of the park. Much of the concrete was broken up and stacked at the boundaries of the park to form a low wall. The stacked concrete will be sprayed with additional material then painted to match the rest of the waterpark, creating an aesthetically pleasing privacy screen.

Hendrix choose to use Texas and local-based suppliers whenever possible. The waterpark slides were provided by Alamo Grid of Seguin, Texas, and local contractors, architects, laborers and suppliers were utilized for many of the remaining structures and features. Of course, not everything can come from Texas — California-based Aquatic Design Group provided the overall design, India-based Arihant Industrial Corp. provided the four-lane racer slides and Zebec Water Sports of Fairfield, Ohio supplied all of the tubes and mats. Other familiar suppliers include Splash Radio, Core Cashless, Coca Cola and Smarte Locke.

Chuck Hendrix told *Amusement Today*, "Zebec was easy to work with, they were very, supportive; they talked to us about what the plan ought to be; they talked to us about the conversion on the slide turns. We talked to the major suppliers and they were the ones who really came and impressed us with their wanting to get the deal done."

Hurricane Alley is adjacent to Whataburger Field stadium, the Class AA affiliate for MLB's Houston Astros. Guests can enjoy spectacular



Hurricane Alley, the new \$10 million eight-acre waterpark from Innovative Leisure Partners opened on May 13 in Corpus Christi, Texas on the site of a former cotton warehouse. Part of the warehouse structure was kept in place for use as the park's changing areas and gift shop as seen in the top row. The slides were supplied by Alamo Grid and Arihant Industrial Corp. with Zebec Water Sports supplying all the tubes and racer mats. Supporting suppliers include Aquatic Design Group, Splash Radio, Core Cashless and Smarte Locke. Below, the park's patio deck and covered picnic area is seen adjacent to the outfield of Whataburger Field, home of the Class AA Corpus Christi Hooks. AT/GARY SLADE

views from the slide towers of the ballpark playing field as well the coastline, shipping channel and downtown skyline. The stadium draws almost half a million guests from April to September and a combo ticket is available allowing guests to enjoy the waterpark during the day until 6 p.m. then walk next door to the ballpark for an evening Hooks game.

Quite a number of private outings are already booked for an evening session taking place from 6:30 to 10:30 p.m. A 200-person VIP deck that overlooks the ballpark field is also available. The park offers all types of meal options through TurnKey Catering and an alcohol permit allow for sales of

beer, wine and mixed drinks.

Hurricane Alley has seven full-time employees including Bob Logan who serves as the startup general manager of the park until September, at which time Jim Kunau will step into that position. The park employs about 120 seasonal workers.

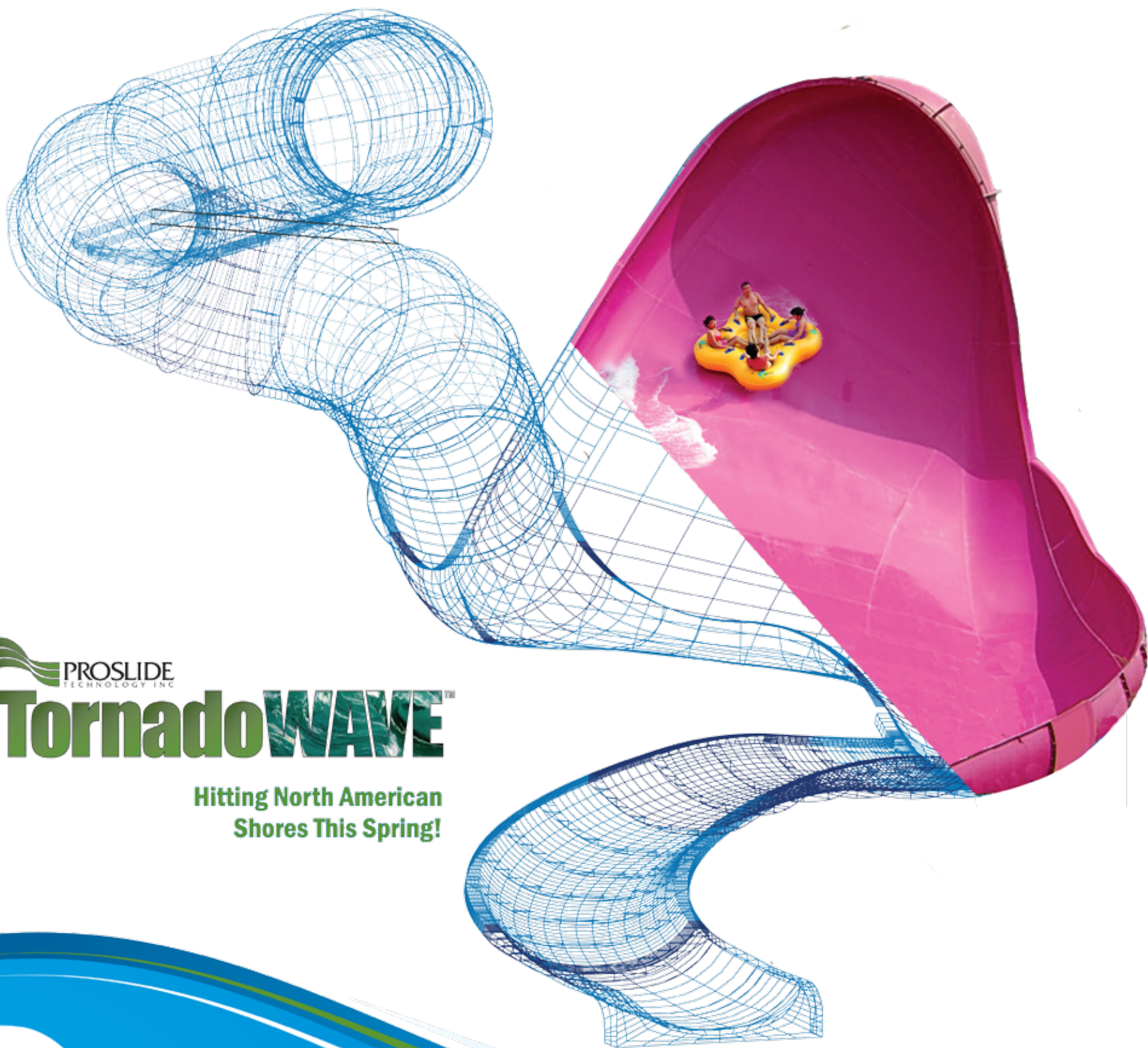
Although just getting started, additional land has already been acquired for expansion. Innovative Leisure Partners is also looking at developing the Hurricane Alley brand in other markets.

"I think for the footprint and the space we had to work with, the offerings are great for this park," said Chuck Hendrix.



PRECISE GEOMETRY.

INDESCRIBABLE EXCITEMENT.



PROSLIDE
TECHNOLOGY INC

TornadoWAVE™

**Hitting North American
Shores This Spring!**



PROSLIDE
TECHNOLOGY INC

www.proslide.com

engineered exhilaration™

WhiteWater West a major supplier for UAE waterpark

UAE — Canada's WhiteWater West has been commissioned to supply and manufacture 12 of 14 complexes for the highly anticipated Yas Waterworld Abu Dhabi. Boasting over 15-hectares adjacent to Ferrari World Abu Dhabi on Yas Island, UAE, this waterpark is set to become one of the largest and most popular waterparks in the Middle East.

Currently under construction, Yas Waterworld Abu Dhabi will feature the world's first Rattler MegaTube waterslide. Featuring "rattles" which change shape in alignment with the different lengths of cylinders, the Rattler shakes riders up with a series of twists, turns and oscillations.

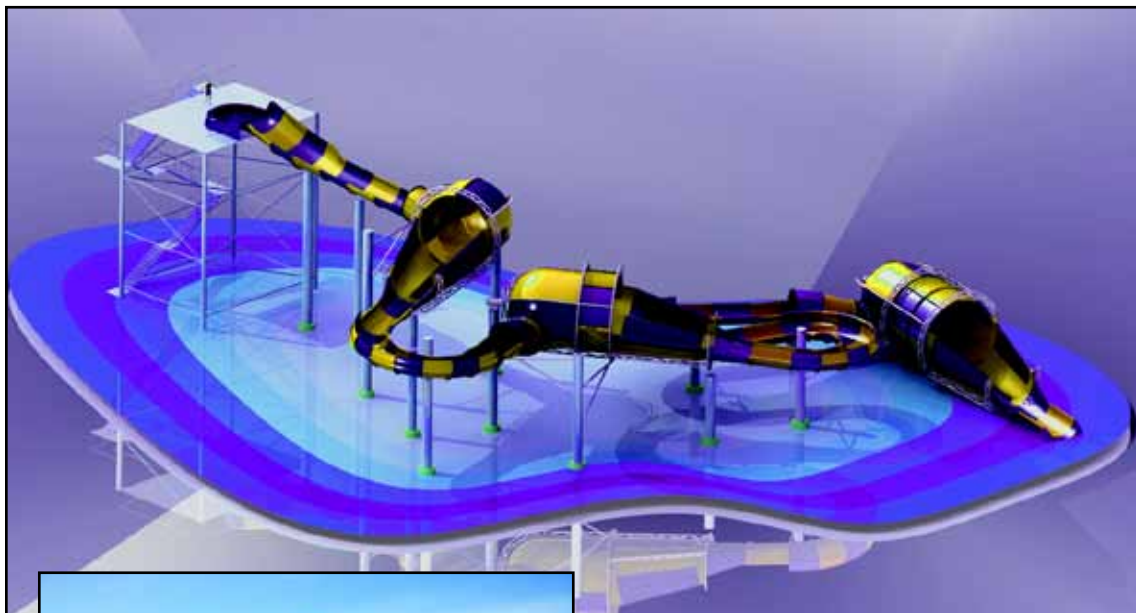
Yas Waterworld Abu Dhabi will also deliver another world's first with SplashQuest, a live action video game adventure that brings waterpark technology to the next level using the patented waterproof AquaGlove or

SplashBand. Players activate dozens of fun water effects to score points while following clues to complete challenges as they actively explore the quest spread all over the waterpark.

Elaborate theming on many of the attractions, including two AquaPlay multi-level interactive play structures, will support Yas Waterworld's celebration of Emirati culture, heritage and infrastructure.

Yas Waterworld Abu Dhabi will offer two FlowRider attractions, the FlowBarrel Ten Double and the FlowRider Double.

WhiteWater West has been awarded a contract to deliver 12 attraction complexes to the new Yas Waterworld Abu Dhabi. Key installations will include the world's first Rattler MegaTube (top photo); AquaPlay (left) and Flow Rider complex (right).
COURTESY WHITEWATER



Waterplay park opens at Pirates Cove Fun Zone



The Pirates Cove waterplay unit from Arihant is highlighted by numerous waterplay features, seven waterslides and tipping buckets. Two pool areas, and 28 cabanas make up the water area. At left, inside the FEC area, an S&S Frog Hopper, 24-foot tall climbing structure and 40 interactive games are set around a themed food area. AT/GARY SLADE

Arihant Industrial Corp., Alamo Grid supply the water elements for park

BURLESON, TEXAS — Pirate's Cove, Burleson's first waterplay park, opened May 5 next to the North Texas Jellystone Park Camp-Resort.

"We're pretty excited about it," said Steve Stafford, general manager of the North Texas Jellystone, which is developing the four-acre family entertainment center with both wet and dry play areas as well as a food court with varied menu options.

Pirate's Cove, the only park of its kind in Johnson County, features a 26,000 square foot, 36-foot high interactive waterplay park with seven waterslides plus interactive features, including a pirate themed structure, a floating lily pad, a ropewalk, 28 cabanas and an activity pool. The waterplay unit was supplied by India-based Arihant Industrial Corporation Ltd. Texas-based Alamo Grid provided a kiddie pirate boat and

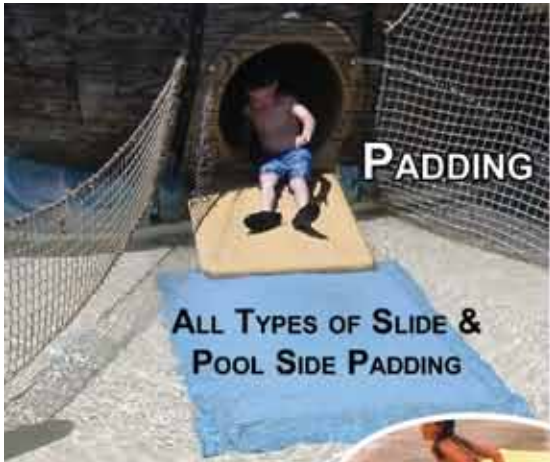
oversaw all construction and installation of the waterpark.

The adjacent entertainment complex has a 13,500 square foot family entertainment center called Pirate's Cove Fun Zone. It includes a 24-foot climbing structure, mini bowling, laser frenzy, an S&S Frog Hopper ride and more than 40 interactive and arcade games from Alpha Omega.

The Pirate's Cove waterplay park is open to the public for a nominal admission price, while the Pirate's Cove Fun Zone and food court can be visited without an admission charge.

"We want to be able to cater to the needs of waterpark enthusiasts as well as people who simply want to drop by and have a place for their children to play or enjoy a meal without getting wet," Stafford said.

Kent Lemasters, Amusement Aquatic Management Group is the consulting manager for the waterplay and FEC areas.



PADDING

ALL TYPES OF SLIDE & POOL SIDE PADDING



PADDING FOR ANY LOCATION



WATER TRAMPOLINES



TUBES



FLOATATION COLLARS



INLINE RAFTS



UPHILL RAFTS



ROUND RAFTS



RAFTS



SIDEWINDER BUMPER



SIDEWINDER TUBES

+1(513) 829-5533
 FAX +1(513) 892-7466
 ZEBEC@ZEBEC.COM
 WWW.ZEBEC.COM



Heavy-Duty Single, Double, Tear-Drop, 3 and 4 Person Clover Tubes made in USA with extra heavy material and overlapped, heat-welded seams

HEAVY DUTY TUBES



Diamond Raft



BUMPER BOAT TUBES



INFLATABLE BARRIERS



HT Heavy Triple Tube



RAPID RIVER RAFT



FOAM MATS



SNOW TUBES & RAFTS



LILY PAD WALK

COMPLETE LILY PAD WALK SETUP

- FOAM Lily Floats
- Overhead Netting
- Entry Pool Side Padding



PLAY NETTING



ROPE & NETTING

Polin supplying equipment to China waterpark

CHINA — Polin Waterparks & Pool Systems is providing waterslides and waterplay areas for the new Caribbean Island Water Park in Yantai, China, located on China's Eastern coast.

The 45,000 square-meter (11-acre) park is being developed by Xin Guang Investment Co Ltd and was designed by Dreampark International. The project includes an indoor waterpark, outdoor waterpark and hotel. Polin is supplying seven slides for the park along with two interactive kids play areas.

"We are excited to bring some of our most thrilling rides, especially the Family Turbulance and Uphill Navigatour, to Caribbean Island Water Park," says Jake Park of Dreampark International.

Attractions in the outdoor section of the waterpark include:

- **Family Turbulance** — one of Polin's extreme slides. Guests first dive down a steep drop and up a vertical section before reversing course and traveling over a small hill before ending in a splash pool. This slide combines elements of Polin's Flying Boats and Wave Slide.

- **The Family Rafting Slide** features 6 – 8 passenger circular rafts that twist, turn and drop through the flume course. The Family Rafting Slide is the first and only RTM-manufactured family slide in

the industry, leaving a shiny finish on both sides.

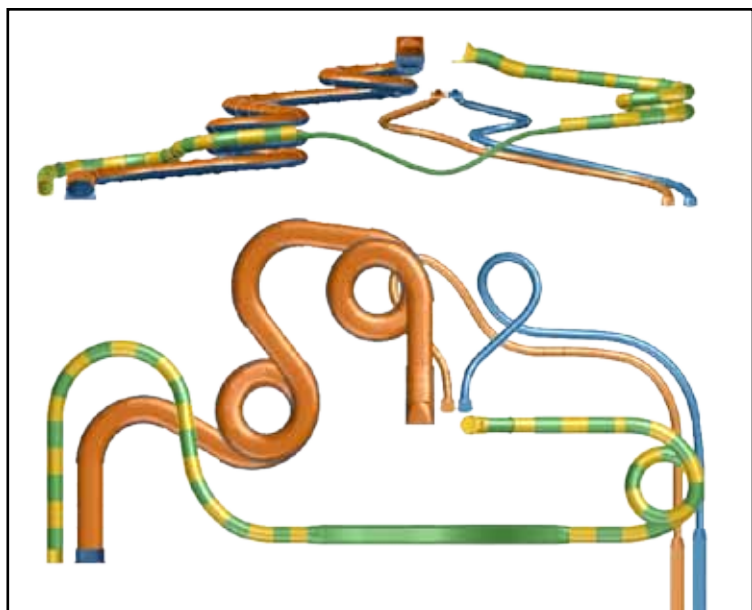
- **The Uphill Navigatour**, Polin's newest offering, is a water coaster that provides up and down sections of flume for the ultimate in thrilling slides.

- **The Kids Play & Fun** play structure, along with a similar version in the indoor section, features interactive water features and junior-sized slides.

Attractions in the indoor section include a second and slightly shorter Uphill Navigatour. The Magic Hole is an enclosed slide that has a unique elliptical shape and flat bottom. It is an exciting new Polin slide that delivers an unforgettable ride experience with twists, turns and drops. The Magic Hole can use single, double or triple inner tubes and even family boats that seat four, which makes it a great slide to enjoy with family and friends. Two versions of the Aquatube slides are quick and thrilling. The smaller inside radius makes for a fast and exciting ride. The Kids Play & Fun similar to the outdoor version will feature interactive water features and junior-sized slides.

Caribbean Island Water Park is scheduled to open in late spring, 2013, with the hotel and indoor and outdoor waterparks. Future growth plans include an entertainment center.

—Jeffrey Seifert



Polin Waterparks & Pool Systems has won the contract to provide numerous waterslides and a waterplay area to the Caribbean Island Water Park in Yantai, China. Among the highlights of the deal is this tower complex that consists of Family Turbulance (extreme slides); a Family Rafting slide and the Uphill Navigatour, Polin's new uphill water coaster. COURTESY POLIN



NEWS SPLASH

COMPILED: Jeffrey L. Seifert, jseifert@amusementtoday.com

The new water and snow park in Nashville, Tenn. (see AT March, 2012) by **Gaylord and Dollywood** has been granted a 12-year 60-percent property tax break by the Nashville Metro Council. Gaylord and Dollywood, working with University of Tennessee economists, have projected the park will bring in 500,000 visitors a year and create more than 1,900 direct and indirect jobs during construction and 1,800 jobs once it opens in 2014.

According to two of the world's leading experts on lightning, last September's death of a 21-year old **Adventure Island** (Tampa, Fla.) lifeguard was caused by the use of non-standard lightning rods. The slide on which the guard was killed was located between two lightning protection installations. The systems rely on a French-made device that is not approved by any U.S. safety code or standard. The product is marketed in the U.S. by **National Lightning Protection Corporation** of Colorado.

A controversial waterpark and hotel proposal for The Forks in Winnipeg, Manitoba, Canada, unanimously passed through the city's Executive Police Committee (EPC). The Alberta-based hotel chain **Canalta Development** and **WaterFun Products** proposed the 50,000-square-foot waterpark and hotel development. The city-owned land where the waterpark would be built is located across the street from Shaw Park, the home of the Goldeyes baseball team. Mayor Sam Kats, who owns the baseball team, recused himself from the vote. However, members of the EPC are hand-picked by the mayor. The recommendation from the EPC was scheduled to go to a full meeting of the city council for a final vote. An approval by the council would allow Canalta to receive a \$7-million city grant. Adding to the controversy is the fact that another waterpark and hotel has also been proposed — one that doesn't require any taxpayer money. On April 27, the city council decided to postpone the vote to get more details after the council was inundated with negative feedback.

Plans for the **Schlitterbahn Waterpark** in **Cedar Park, Texas**, are still progressing. Though not much has been heard since the park was announced January, 2010, news has surfaced that the partners — Schlitterbahn, Cedar Park Land LP and investors—were closing in on a deal. No timeline or opening date has been set. The economic development director of Cedar Park helped recruit Schlitterbahn for the project, but it was the responsibility of the various partners to find investors. Once the deal is finalized, the city of Cedar Park intends to pursue a multi-million dollar economic incentive package.

Snö Mountain, Scranton, Pa. is hoping a warm summer will boost attendance at its **Snö Cove** waterpark. This year's unusually warm, snowless winter has put a financial strain on resorts up and down the eastern half of the U.S. Snö Mountain/Snö Cove hasn't made good on its real estate taxes and a state loan is still in forbearance as it accrues interest. The resort was looking for refinancing packages for its debts and arrearages. The resort had been looking for a loan in excess of \$10 million, using the resort and its 388 acres as collateral. With financing

in place, the waterpark was planning to open on Memorial Day weekend and start generating income.

Big Splash Water Park, a popular summer place for residents of Billings, Montana, was demolished in April. The property, which had been up for sale for some time, was purchased by the nearby Kelly Inn. The new owners plan to build a new motel on the property. The closure could have left the city without a waterpark, but a new **Sahara Park Aquatic Center** is currently under construction by the city of Billings department of Parks, Recreation and Public Land. It is expected to open this summer.

Last month **CoCo Key Indoor Water Park**, Rockford, Ill., conducted a special promotion to help raise money for the Friends of the Rockford Public Library. "CoCo's Spring Book Drive," which began April 29, offered \$5 off admission for the day to the indoor water park with a donation of a new or gently-used book. The promotion ran every Sunday through the end of May. Organizers expected to collect more than 1,000 books. Friends of the Rockford Public Library will sell them at their book shops located at two of the Library's branches. The money collected from the book sales will go back to the library in the form of grants. Books that could not be used or sold are donated to Better World Books, an organization that helps provide books to needy people around the world.

Calypso Waterpark in Limoges, Ontario, near Ottawa, received the Innovation of the Year award for last year's Summit Tower aquatic complex addition. Noted as being the highest freestanding waterslide tower in North America, the 10-story tower features 10 different slides including two AquaLoops. The new complex was provided by **WhiteWater West** of British Columbia.

The residents of the city of **Walla Walla, Washington**, will be asked to vote on a new tax levy to raise money for a city-owned waterpark. If approved, taxes would increase 50 cents per each \$1,000 of assessed property for the next nine years raising a total of \$7.8 million. The city has already received pledges of \$1 million in private donations. The new family aquatic center with two slides, a wave pool, lazy river and splash pad would replace the closed Veteran's Memorial Pool.

Following a Cryptosporidium outbreak in March, the **Edgewater Resort & Water Park** in Duluth, Minn. made a \$100,000 investment to make sure it doesn't happen again. In May, the park installed an ultraviolet water-treatment system that will quickly eliminate harmful micro-organisms and bacteria from the water. It disables Crypto in a way that normal levels of chlorine do not. Crypto can survive in properly maintained facilities and even though the waterpark was meeting or exceeding industry standards, people still got sick. UV technology has been available to waterparks for about five years and some states have begun to mandate it. The outbreak damaged the park's reputation and they are doing what they can to earn back the public's trust.

Family Python



Ocean World, Seoul, South Korea



World's largest enclosed MEGAtube™ flume!

NR420 Waterpark, North Richland Hills, TX



 WHITEWATER®

The Waterpark Company



Evergreen Wings and Waves Waterpark, McMinnville, OR

AquaPlay™

by Whitewater



The ERUPTION surges over 100 feet!

Michigan's Adventure, Muskegon, MI

The coolest family fun with something for everyone!



Bali Waterpark, Fushun, China

 **WHITE WATER**®

The Waterpark Company

Tel: +1.604.273.1068 • www.aquaplay.ca

A VIBRANT SHOWCASE FOR THE EXTRAORDINARY!

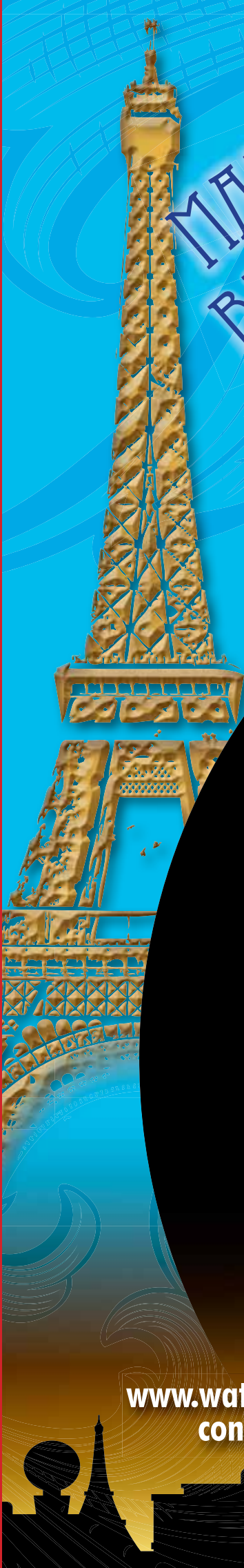


COME SEE THE BEST OF THE
WATERPARK INDUSTRY
UNDER THE
BRIGHT LIGHTS
OF VEGAS

**LAS
VEGAS**

WPA | OCT. 2ND - 5TH, 2012
TRADE SHOW OCT. 3RD - 4TH





MAKE A DATE TO BE IN LAS VEGAS FOR THE WWA SHOW! OCTOBER 2-5, 2012



It's all here for you –
all in one brilliant location!

*OUR TRADE SHOW GIVES YOU QUALITY FACE TIME
WITH OUTSTANDING EXHIBITORS!*

Walk the show floor
October 3rd & 4th and meet with
people who spend as much time in parks as you do.

EDUCATION IS OUR MARQUEE EVENT!

Our educational program
extends from October 2-5 and is
jam-packed with topics that matter most to you and the
success of your business. Whether you manage a small aquatic
center or a large outdoor facility, we've got the sessions to
meet your expectations.

THE LEARNING NEVER STOPS AT WWA!

Our networking events
give you the extra time to share ideas
and best practices with like-minded professionals –
and they are lots of fun!

[www.waterparks.org/
convention](http://www.waterparks.org/convention)

Online
registration available
NOW!





BUSINESS

REVENUE

PEOPLE

SAFETY

SUPPLIERS

Reporter's Notebook

2012 Asian Expo trade show floor sold out

CHINA — The International Association of Amusement Parks and Attractions (IAAPA) announced exhibit space on the Asian Attractions Expo (AAE) 2012 trade show floor has sold out. Covering more than 6,000 square meters, AAE 2012 will be the largest trade show IAAPA has hosted in Asia. Approximately 275 companies from 30 countries will display the latest innovations, services, and products for the amusement parks and attractions industry. The annual trade show will take place June 5-8, 2012 at the Hong Kong Convention and Exhibition Centre in Hong Kong SAR, China.

•AAE exhibitor list...page 9

Quoted

"Some companies in the attraction and entertainment industries anticipate that by 2013, up to half of the traffic to their websites will be from mobile devices."

—Statement from Gateway Ticketing Company on website trends

Apollo Global Management acquires Great Wolf Resorts for \$262 million

Bidding war upped final purchase price

NEW YORK, N.Y. — An affiliate of Apollo Global Management and Great Wolf Resorts Inc. announced on May 4 the successful completion of Apollo's acquisition of Great Wolf Resorts, Inc., North America's largest family of indoor waterpark resorts, for \$262 million.

Aaron Stone, a senior partner at Apollo Global Management, commented, "We are very excited to have completed the acquisition of Great Wolf. Since the beginning of this process, we have been extremely impressed with Great Wolf, including its management team and the exceptional family destination resorts that it operates."

Scott Ross, a partner at Apollo Global Management, added, "We believe that Great Wolf will prove to be a strong addition to the Apollo portfolio of investments and we look forward to working with Kim Schaefer and her talented management team to build upon the company's distinctive brand and the incomparable experience Great Wolf offers to its millions of customers."

Kim Schaefer, chief executive officer of Great Wolf, said, "All of us at Great Wolf are very excited about partnering with the team at Apollo and what that partnership will mean for our next phase of growth, as well as the benefits it offers to our

employees and the communities we serve. Apollo's proven investment track record and access to capital will facilitate the continued

expansion of Great Wolf as a premier family vacation destination."

About the acquisition

The affiliate of New York-based Apollo, which is an alternative investment manager, offered \$7.85 a share. Great Wolf shares (NASDAQ: WOLF) stopped trading after the market closed on Friday, May 4 and will no longer be listed.

Apollo's purchase price of \$262 million comes after a bidding war that began when Apollo agreed in mid-March to buy Great Wolf for \$5 a share. Some big shareholders argued that Great Wolf Resorts was worth much more. KSL Capital Partners, another private equity firm, made repeated counter offers, driving the price up until withdrawing in April from further bidding.

About Apollo Global Management

NEW YORK, N.Y. — Apollo (NYSE: APO) is a leading global alternative investment manager with offices in New York, Los Angeles, Houston, London, Frankfurt, Luxembourg, Singapore, Mumbai and Hong Kong. Apollo had assets under management of more than \$75 billion as of December 31, 2011, in private equity, credit-oriented capital markets and real estate funds invested across a core group of nine industries where Apollo has considerable knowledge and resources.

•www.agm.com

About Great Wolf Resorts, Inc.

MADISON, Wis. — Great Wolf Resorts, Inc. (NASDAQ: WOLF), Madison, Wis., is North America's largest family of indoor waterpark resorts, and, through its subsidiaries and affiliates, owns and operates its family resorts under the Great Wolf Lodge brand.

Great Wolf Resorts is a fully integrated resort company with Great Wolf Lodge locations in: Wisconsin Dells, Wis.; Sandusky, Ohio; Traverse City, Mich.; Kansas City, Kan.; Williamsburg, Va.; the Pocono Mountains, Pa.; Niagara Falls, Ontario; Mason, Ohio; Grapevine, Texas; Grand Mound, Wash.; and Concord, N.C.

Great Wolf's consolidated subsidiary, Creative Kingdoms, LLC, is a developer and operator of technology-based, interactive quest adventure experiences such as MagiQuest.

•www.greatwolf.com



Looking for a part? E-mail us!

Email: parts@nap-inc.com

NORTH AMERICAN PARTS, INC.
(716) 839-4791 x101

NAPi

The turnstile never lies.

We make the turnstile spin.



FOR MORE INFORMATION CALL JOHN SEEKER AT (214) 210-5981

U.K.'s Legoland Windsor Resort adds themed hotel

STORY: Andrew Mellor
amellor@amusementtoday.com

UNITED KINGDOM — A new, 150-room hotel has opened at the Legoland Windsor Resort, located close to London in the U.K.

Situated on a lakeside area right on the edge of the park, the hotel features a bright, playful exterior with Lego blues, reds and yellows, flags flying from the roof and a giant clock tower inhabited by a large, six meter (19.6 foot), smoke-breathing Lego dragon which welcomes guests outside the main entrance.

The reception area features an impressive floor to ceiling, rotating Lego toy box, full of Lego models exploding out of it, while at a child friendly level sensors allow smaller guests to activate a range of noises. At the top of the mobile giant models reflecting key attractions at the park are suspended, while the reception area itself houses a wall made entirely out of 6,000 Lego mini figures.

But that's just the start of the experience. Lego themed lifts and corridors lead guests

to the bedrooms where the theming truly kicks in – from the wallpaper and carpets to the door numbers and Do Not Disturb signs. Once in a room, a special code can be found hidden in the carpets and room features that will open a safe containing a Lego gift and, be it a Pirates, Kingdom or Adventure themed room, parents and children get their own sleeping areas.

The hotel also features the Lego Pirates themed splash pool, featuring a Lego pirate ship and a host of water based features and activities, while Brick's Restaurant provides the opportunity to refuel. The Skyline Bar allows adults to relax after a day in the park, while youngsters can enjoy a magical stage and play area in which they can climb a castle turret complete with Lego princess and noisy ogre. On selected evenings, a mini-disco featuring Lego characters is also held.

The latest addition to the offering at Legoland Windsor incorporates 1,600 Lego models and over 15 million Lego bricks were used in the build.



The new hotel at Legoland Windsor Resort provides a fully themed Lego experience from the moment guests arrive to the time guests enter their rooms.

COURTESY LEGOLAND WINDSOR RESORT



FAST TRACK

COMPILED: Scott Rutherford,
srutherford@amusementtoday.com

Walt Disney World is underway on hosting Star Wars Weekends, an annual special event at **Disney's Hollywood Studios** theme park that celebrates the Star Wars saga. On Friday, Saturday and Sunday of each weekend May 18 through June 10, park guests can join celebrities and characters for special shows, panels and presentations.

For the second year in a row, **Kings Dominion** hosted the 18th Annual Rescue Challenge, nine teams, from all over Virginia and Maryland, recently spent a day at the park using the facility to perform high-technical training, including high angle rope rescues on the Anaconda and Grizzly roller coasters.

Six Flags Over Georgia and Children's Healthcare of Atlanta are partnering up to challenge adrenaline-junkies everywhere to raise money during the first-ever Children's Coasterthon. This coaster marathon will take place on the Great American Scream Machine - the theme park's classic wooden roller coaster on June 8. The top overall fundraiser will receive a trip to Six Flags Great America to take on their newest coaster: X Flight.

The oldest living animal at Florida's **Silver Springs Nature's Theme Park** was recently found dead in his pen. Known as "Frank The Tank," the Aldabras tortoise weighed 660 pounds and was over 100 years old. The cause of death is being attributed to age.

Ripley Entertainment Inc., has acquired its **Believe It or Not! Odditorium** and the **Ripley 3-D Moving Theater** franchise in Panama City Beach, Fla. from long-time franchisee, Nole One, LLC.

The United States' first **Legoland Hotel** is under construction at **Legoland California**. The three-story, 250-room Legoland Hotel is being designed to give guests the interactive family experience that has brought success to Legoland California, Sea Life Carlsbad Aquarium and Legoland Water Park.

Walt Disney Imagineers have designed **The Golden Oak**, a luxury residential resort community in Orlando named after Walt Disney's Golden Oak Ranch in California. The custom homes are priced between \$1.5 million and \$8 million. Ultimately, Disney plans to build 450 homes and a 445-room Four Seasons hotel at the location. Homeowners will have full access to the Disney theme parks, as well as resident-only facilities, including private VIP tours of the parks, holiday home decorating, grocery delivery, an on-call concierge service, a yoga studio, a fitness facility, and a full-service spa.

Kennywood Park recently received top honors in two notable surveys from About.com Readers' Choice Awards and the **National Amusement Park Historical Association's** Amusement Park and Attractions survey. The

annual About.com Readers' Choice Awards named Kennywood Holiday Lights the Best Theme Park Holiday Event of 2011. In addition, NAPHA released the results of its 26th Annual NAPHA Amusement Park and Attractions Survey and named Kennywood as Favorite Traditional Amusement Park.

Park Inn by Radisson, Abu Dhabi Yas Island has announced its latest hotel package, which includes admission for two to nearby **Ferrari World Abu Dhabi**. The package also includes one night's stay at the hotel and breakfast the following morning.

Connecticut's **Mystic Seaport and Mystic Aquarium** are seeking zoning approvals for two major \$1.2 million building projects, while Seaport Marine at the foot of Washington Street wants to construct a store and restaurant with outdoor seating overlooking the Mystic River. The Seaport is seeking to revise its Marine Heritage District master plan to allow construction of a 20,000-square-foot exhibit building on the north end of the museum grounds overlooking Anchor Square.

Six Flags Over Georgia and Kroger have announced a joint partnership giving Kroger shoppers the opportunity to purchase discounted admission tickets to **Six Flags Over Georgia** and **Six Flags White Water**. Six Flags tickets are available for purchase at any of the 215 participating Kroger stores covering Georgia, Eastern Tennessee, Alabama and South Carolina.

The Animal Care Center, the newest addition to the **Pittsburgh Zoo & PPG Aquarium**, recently opened its doors to the zoo's sick and injured animals. The medical area of the building is closed to visitors, but zoo officials announced that a public interactive learning area is in the works and set to open in 2013. The two-story, 22,000-square-foot care center has a hospital on the basement level, including digital radiology and ultrasound equipment; new technology that allows pictures to be e-mailed to other veterinarians for a better diagnosis; a pool for aquatic animals; a hydraulic table for procedures to better handle larger animals; and individual holding cages with controlled temperatures and access to outside areas.

Amanda Thompson, managing director of **Pleasure Beach, Blackpool**, has been awarded an OBE for services to the amusement industry. She is the fourth generation of her family to run the popular attraction that welcomes thousands of visitors every year.

Disney's Hollywood Studios will soon be home to an attraction based on the four Pirates of the Caribbean movies, starring Johnny Depp. Opening this fall, the new offering will be located where the "Journey to Narnia: Prince Caspian" attraction resided until Sept. 2011.

Fresh Look — IAAPA: Philly Pretzel Factory

STORY: Tim Baldwin
tbaldwin@amusementtoday.com

FINAL IN A SERIES

ORLANDO, Fla. — Fresh Look is an *Amusement Today* feature that spotlights first time exhibitors at the recent IAAPA trade show. *AT* sought out new and engaging vendors that may not have caught the eye of everyone attending the expo.

What is it?

Philly Pretzel Factory is a homemade hand-twisted pretzel created fresh in the parks and venues.

What made *AT* take notice?

If the aroma alone didn't draw you in, the throngs of people clamoring to get a sample would pique your interest. Size-wise, these were the biggest samples of anything to be enjoyed at the IAAPA expo.

Amusement Today caught up with Martin Ferrill, president of Philly Pretzel Factory at the show. Ferrill

feels people love pretzels and that his company has a really unique product. "Most people outside the Philadelphia area have never had a 'real Philly' pretzel before," he says. Following IAAPA, Ferrill had this to share:

How was your first IAAPA experience?

As a first time exhibitor, we were able to talk to many key decision makers throughout the show. On a daily basis we were able to talk with hundreds of people interested in putting pretzels into their facility.

Did the show meet your expectations?

The IAAPA show absolutely exceeded my expectations.

Did you learn something from the experience, or would you have advice for future first-time exhibitors?

I think the biggest thing I learned as a food company is



Martin Ferrill - President, Philly Pretzel Factory

you should bring samples of your product. We were able to twist and bake fresh pretzels on the premises. The ability to hand out a sample was what got people interested in the product.

What does your product bring to the industry?

Our recipe and formula is different from a traditional mall pretzel or a frozen pretzel. Our traditional pretzels are fat and cholesterol free and contain zero grams of

Trans fats.

What is your biggest success story from the show?

The biggest success is the number of contacts and friends that we made at the show. The show really allows you to meet all the key people in the amusement park industry. We are opening a store at Dorney Park in Allentown, Pennsylvania as a result of the show.

•phillypretzelfactory.com

Magic Memories establishes partnership for China expansion

CHINA — Magic Memories the tourism photography experience company, launched its photography solutions at Shanghai Chang Feng Ocean World at the beginning of 2012, integrating services and products seamlessly into the guest experience. The initial results have exceeded expectations with the guests generally excited about the new photography solution.

Shanghai Chang Feng Ocean World is China's first large scale aquarium and is the flagship tourist attraction of the Oceanis Australia Group. Shanghai Ocean World is the only aquarium in China which combines marine sightseeing with ecological leisure and has some amazing exhibits which are reflected in the photobooks Magic Memories provides.

The partnership with businessman Thomas Lu, gives Magic Memories a strong stake in China and expects huge growth in the market over the next year.



We'll give your guests' taste buds a thrill.

Your hungry guests will flip over pulled-pork sandwiches featuring our world-famous Montgomery Inn Barbecue Sauce.



WWW.MONTGOMERYINN.COM

Bob Coil, previous owner of Dartron Industries, dies at 69



Bob Coil (1942-2012)

SALEM, Ore. — James Robert Coil, 69 years old, of Bend, Ore., and previous owner of Dartron Industries, Salem, Ore., died April 19 while in Orvieto, Italy, on a three-week vacation with his wife, Wanda.

“Bob and Wanda were very dear friends of mine and my wife, Melissa,” said Joe Burum, executive director, Showmen’s League of America. “They were at our wed-

ding. I am just heart broken for Wanda, because they were truly still in love.”

Burum recalled an incident from years ago that took place during one of the Showmen’s League’s annual conferences in Las Vegas. The League’s event includes a tabletop trade show, with dates coinciding with the International Association of Fairs and Expositions annual convention and trade show.

“It was when the Showmen’s League’s tabletop trade show would go into the evening,” Burum said. “Bob and Wanda were there with a table for Dartron Industries. Wanda decided she wanted to go dancing. So, they left and went out onto the dance floor. They left a sign that said something like they had decided to go dancing. They left a clipboard and piggy bank on the table. The sign said if anyone want-

ed to buy a ride, to write what they wanted on the clipboard and put a deposit in the piggy bank.

“I’m not sure they really sold any rides that evening, but it just demonstrates what type of person he was,” he said. “He was good at business and serious about business, but, at the end of the day, his family was what was important to him.”

According to the obituary that ran in the local newspaper in Oregon, Bob was born in Miami, Arizona, on August 3, 1942. He grew up in an Arizona mining town where his father, Benjamin R. Coil, was general manager of the Miami Copper Company. His mother, Margaret, was a nurse. In high school, he was captain of the baseball and football teams and won all-conference honors. He received a B.S. degree from the University of Arizona, where he majored in economics and was a member of the Phi Gamma Delta fraternity. He earned a masters degree from the Thunderbird School of Global Management. In Vietnam, he was an officer in the U.S. Marine Corps, serving with distinction.

That obituary also stated: “During his business career, he and his family lived in many places, including Mexico City, Ohio, and Texas, before moving to Bend, Oregon, where he lived for 24 years. Until recently he owned Dartron Industries, a manufacturing company in Salem, Oregon, which designed and manufactured amusement park rides.

“An avid sportsman, Bob enjoyed skiing, racquetball, hiking, kayaking, golf, and bicycling. The upcoming Masters Road National Championship in cycling inspired his latest training regimen. He followed all Pac-12 sports with enthusiasm. Bob and Wanda traveled throughout the world on hiking, kayaking and snorkeling adventures.

“He will be greatly missed by his wife, Wanda, to whom he was married for 37 years; son, Darren of Berkeley, Calif., and two grandchildren, Hailey and Kaleb; and daughter, Alison and her husband, Jacob Bruce of San Diego.”

A memorial gathering for close friends and family was held May 5, at the Bend Golf & Country Club.



1310 West Fourth Street
Mansfield, OH 44906
Office: 567-247-8204
Fax: 419-529-4288

Contact:

Jack Falfas 419-202-7876
Gary Gast 567-247-8204
Randy Payne 567-247-8204

reamusement@gmail.com
sales@reamusement.com

WHO and WHY REAMUSEMENT?

Are your workloads continuing to increase and staffing at a minimum? REAMUSEMENT is the quality choice for you. We will be your partner in completing maintenance “rehab”, renovations, or new construction. Our goal is to provide quality maintenance of your trains, ride units, and structures to minimize the turnaround time to ensure your guests have the maximum entertainment experience.

Our Services

- Rebuild ride units per manufacturer’s specifications
- Rebuild ride units to meet all codes and certifications
- Fiberglass repairs
- Carpentry repairs
- Repainting
- Inside storage
- Welding if discovered after NDT testing
- Refurbish flat ride components and ride units
- NDT inspections for the ride units per the manufacturer’s specifications
- Assist with on-site set up if maintenance staff needs assistance
- General contractor and/or assist with construction projects
- Ride erection needs

www.reamusement.com

Schlitterbahn, industry remembers Sherrie Brammall, 63

CANYON LAKE, Texas — Sherrie Brammall, former public relations and marketing guru for the Schlitterbahn Waterpark Resort and NBGS International in New Braunfels, Texas died suddenly at the age of 63.

A graduate of Ohio University, Brammall was a successful journalist who served as director of communications at Schlitterbahn Waterparks for many years helping to build its reputation to national and international stature.

She was an active volunteer with IAAPA (The International Association of Amusement Parks and Attractions) and served on both the Communications and Government Relations committees. Most recently she was the producer of IAAPA's "News Flash," a daily online newsletter.

Brammall was a passionate master gardener who created stunning gardens and appreciated the beauty in all people and things.

Schlitterbahn's COO Terri Adams said the team often referred to Sherrie as their own "Pollyanna" because of her unfailing positive outlook. Taking that a step further, Adams said this literature description of pollyanna best describes Sherrie: "Pollyanna has a sunny and irresistible personality and through intelligent dialogue, optimistic attitude and an irrepressible enthusiasm for life she manages to reshape and redesign the lives of the people around her as the aunt and other cynical people soon fall under her upbeat charm."

Jeffrey A. Siebert, Schlitterbahn director of communication said, "I have so much to be thankful for because of Sherrie. We first met when we both were committee mem-



**Sherrie Brammall
1949-2012**



bers serving IAAPA's communications team. We instantly hit it off. Sherrie was one of those people that from the day you meet, you feel like you've known forever. She was smart, warm, compassionate and knew inherently what needed to be done."

"During the summer of 2005 I received a call from Sherrie at my Paramount's Kings Island office. We were chatting for a while and catching up, when she popped the

question, would you be interested in taking over my position at Schlitterbahn waterparks. How could I say no to that? I will forever eternally be grateful to Sherrie," Siebert said.

One project Sherrie became involved in was the push in the mid to late '90s and into the new millennium to get the Texas school districts to push the start of the school calendar back to a late August opening.

The original statewide push called "Texans for a Traditional School Year" had the support of every major and family-owned amusement facility in the State of Texas. Overseen at the time by Bruce Neal of Six Flags Over Texas, Sherrie became one of the leading members to keep the campaign alive following his death. Along with the help of Tina Burno, and so many others, Sherrie saw the Texas parks get what they badly needed, a late August start date for the school year.

No one knows those efforts better than Paul L. Serff, president emeritus, Texas Travel Industry Association in Austin, Texas who said: "Sherrie was the glue that helped manage the later school start effort in Texas. She helped push the issue forward while at the same time, making sure the facts told the story. She had an amazing way of doing the right thing the right way—always taking the high road. She was a great asset to the industry and I was honored to call her a friend."

The fun side of Sherrie didn't go unnoticed either. Amusement Today Publisher Gary Slade said, "I remember the first time I rode the plywood prototype for the Master Blaster. I knew Schlitterbahn had a slide that would change the waterpark industry forever. Shortly after the finished product opened, I was right. It was an instant hit. Sherrie and I had many conversations about how she could build excitement about their new prize ride. Since they were already marketing it as roller coaster on water, I told her to try and get the coaster community to embrace the ride. If the coaster fans loved it, your marketing would take care of itself. As a result, the park has hosted countless events for their fans

Terri Adams, COO Schlitterbahn Waterparks shares her thoughts on Sherrie Brammall

The beginning: Sherrie originally worked for us writing copy and travel writing. She had worked in another industry, but quickly got the bug for travel and all things Schlitterbahn — she understood the power of relationships, and the power of grassroots organizations affecting legislation.

On the Texas school year effort: We were working with Bruce Neal, Bob Bennett and Larry Cochran, all with Six Flags. I distinctly remember getting up in front of a group at a Texas Travel Industry Association meeting 15 years ago or so — Sherrie had talked them into doing a breakout session on school calendar issues, which we could not get anyone interested in, and the room was so full they had to open up another room. I made my presentation, while Sherrie stood in the back and collected names to find folks to start a coalition and help us get the calendar issue a priority. Needless to say, it became a priority.

Schlitterbahn 'donated' 20 percent of Sherrie's professional time and our offices to work on the calendar issue. She really believed in the issue, but was always a behind the scenes lady.

On her role at Schlitterbahn: That was Sherrie — she worked tirelessly and with professional conviction behind the scenes making whatever she was working for the absolute best it could be. She NEVER wanted to be out front — but made sure that whoever the face of Schlitterbahn was looked the part, was well prepared, and then she would hover and make sure.

Sherrie was instrumental in getting the *NBC Today* show here when we opened Surfenburg — she so enjoyed the company of Tim Baldwin and Gary Slade — that they could help us get Schlitterbahn more well known was, I think, the icing on the cake for Sherrie. Ultimately, Sherrie made me appreciate the great intrinsic value of Schlitterbahn as a brand.

Sherrie followed through on whatever she did. If she said she was going to get the calendar changed, by golly she did, but with such finesse, she made you think you did it. She was never satisfied with anything less than excellent. Her iron gentleness guiding us to excellence was almost unnoticed by some.

Final thoughts: Sherrie gave me wise and wonderful advice on many life moments as a professional, and as a wife, mother, and sister. Ultimately, I am certain that I am a better person because of Sherrie.

To this day, when tough decisions are at hand, many of our team reflect and ask, what would Sherrie say...

Forever, she will be a measure of how to say and do the right thing....what better legacy could there be?

—Terri Adams



From l to r: Schlitterbahn's Jeff Henry, Sherrie Brammall and Mike Jaroszewski seen during the construction of the first Master Blaster in 1994. AT FILE

that included the launch of exclusive slide time. Sherrie and the Schlitterbahn team led the Master Blasters to win countless awards including a repeat Golden Ticket winner."

Slade continued saying, "Texas and our industry have lost another truly great positive promoter of our industry. I'm thankful I got to spend the time I did with Sherrie and learn from her. Most of all, I'll remember the support and encouragement she provided in those early years when I had just started Amusement Today. She was always there to pick me back up when I was

down, especially following the death of my dear friend Bruce Neal."

Sherrie was the loving and devoted wife of 42 years to Shawn, mother of Shane (Jennie) and Ian (Evin), and loving grandmother to Mason, Finnegan and Marilyn Brammall. She is also survived by her mother, Marilyn Tompkins; sister, Gay Kaminski; brothers, Douglas Tompkins, Jack Tompkins and Todd Tompkins. She was preceded in death by her father, Jack W. Tompkins and brothers Mike Tompkins and David Tompkins.



NEWS & NOTES

www.aimsintl.org

Amusement Industry Manufacturers and Suppliers International, Ltd. • 3026 S. Orange • Santa Ana, Calif. 92707
Phone: (714) 425-5747 • Fax: (714) 276-9666 • E-mail: aims.office@gmail.com • Web: www.aimsintl.org

In search of one great question

Roger Berry

First vice president
AIMS board of directors

For many years I have attended the AIMS Safety Seminar as an instructor. Organizing my presentation has never really been a problem it seems. The basics, what's new, and industry trends seem to dictate the path. What has always been a challenge is finding that one great question that will stimulate the class.



Berry

Every class every year there is one great question that amazingly electrifies and evokes relaxed participation by the students. Suddenly examples and opinions abound, we've just found the sweet spot. That one question

has just established the energy for the entire class. Finding this spot can be difficult, but participation in class discussions makes you think and gets the neurons flowing. This moment is what I come back for every year.

The Webster dictionary defines participation as: "to take, or to have a part, as with others."

Participation and sharing are the most important aspects of the seminar experience. Vendors, suppliers, consultants, engineers, regulators, inspectors all come together to share their expertise and offer a helping hand. We are all fully prepared to assist in sending our students back to the work place further committed as a safety professional. I have been told so many stories of individuals returning back to work with renewed vigor and commitment.

Keeping on your toes with

this many passionate attendees can sometimes be a challenge. Networking events always seem to be a perfect venue for the one great question test. Generally these networking events spawn casual roundtable discussions on a variety of topics, with helpful tips, and suggestions. So be prepared for ideas on product form, fit, and function. Invariably, as a company we bring changes to products, and introduce new products as a result of the seminar.

The magic of one great question is that you never know who will ask it, or if it will manifest itself from a series of thoughts. As the instructor I try to always be the bearer of the magic, but am always elated when it occurs from the students. As you prepare your staff for the seminar, please ask them to make a list of questions

for each class that they are going to take. These questions should not be just busy work but rather reflect things that they would like to find the answer to.

Preparation for the AIMS Safety Seminar is not just limited to the organization making the presentation or the different instructors, preparation is also the responsibility of the student. The AIMS Safety Seminar is a multi-national melting pot of information all available for the sharing. It is an event centered around education, safety, sharing, and participation. It can be a life changing event. By the way, I have been to 17 of the seminars and I'm still searching for that one great question, so come prepared, you may just have that one great question, that question that sparks conversation and brings out facts that may benefit more than just you.

AIMS member spotlight: Craig Koenig

Editors note: This is a series of articles to run in AIMS News & Notes that spotlight an AIMS member who has been active in the annual AIMS Safety Seminar. To suggest a future spotlight on an AIMS member contact Steve Laycock at: steve.laycock@rides.com

Craig Koenig
Holiday World
& Splashin' Safari
Director of Safety



Koenig

Craig Koenig who serves Holiday World and Splashin' Safari as their director of safety was voted Best Student of the Year at the 2011 AIMS safety seminar this past November in Orlando. It was his outgoing personality, networking skills, and personal interaction within the classroom along with his work motto/goal "to make safety fun" that helped lead him to this honor. With all of that, Craig still took time to answer some questions for AIMS News & Notes.

How did you get started in the amusement business?

It was the year 2000 and I was working for an outside contractor. I was managing the fiberglass crew that was assembling the Zoombabwe for Splashin' Safari Water Park. The Zoombabwe is the largest enclosed waterslide in the world.

What did you do before you were in the amusement business?

I was in quality control for a local construction company in south central Indiana.

What do you do in your free time?

I am a big practical joker so I am always trying to come up with ways to out smart my kids, looking for the next good April Fools Day joke, and just trying to make people laugh by being the comic relief. Also, you don't want to be around me when I see a VW bug because I am always quick with a punch for the "Punch Bugging" game which never gets old.

Tell us something about yourself that is not commonly known by your amusement industry peers.

I once jumped on a pogo stick dressed as a clown showing off

through the entire length of a parade. Yes, I can still jump on a pogo stick.

What is so special about the facility for which you work?

It's Holiday World, need I say more?

How long have you worked at your present facility?

I have been at Holiday World full time now for 10 years, five as a carpenter and five as director of safety. I also spent one season working in the games department.

Tell us one thing you have learned from the AIMS Safety Seminar.

One thing I have learned from the seminar is everyone there works together to come up with ways to improve not only their own facility but the industry as a whole.

What was your favorite class at the AIMS Safety Seminar and why?

Survivor Tools for Coaching Your Team was my favorite class this year. This class, more than any other I have been to, was so full of enthusiasm and interaction.

Why should someone attend a training seminar and particularly

the AIMS Safety Seminar?

There are lots of reasons to attend the AIMS Safety Seminar but the most obvious reason is the networking. Networking is a must if you want to be a successful leader. AIMS affords you the time for this most important activity; AIMS will meet your needs.

In general, how was your overall experience at the AIMS Safety Seminar and how prepared were your instructors?

The 2011 AIMS Safety Seminar raised the bar in the quality category. Every class was busting with information, passion, and excitement. This is one seminar I am glad I didn't miss. The class content and the instructors were great.

Tell us one person you have met here during a networking opportunity time that has made an impact on you and why.

The person who has made the biggest impact on me was Matt Heller. Matt is a performance optimist consultant. Matt always sees his glass as half full and he is always willing and ready to help fill another's glass.

Gateway Ticketing introduces eGalaxy Mobile Web Store

BOYERTOWN, Pa. — Gateway Ticketing Systems, Inc.'s newly-released eGalaxy Mobile Web Store helps customers improve operations and efficiency while increasing sales. Consumers expect to be able to use their mobile devices for day-to-day activities and ticketing is no different. The eGalaxy Mobile Web Store meets that expectation and enables Gateway customers to configure products targeted specifically toward mobile consumers. The convenience of the Mobile Web Store encourages guests to use their phones to make purchases en route or on arrival to avoid lines. Guests can also order additional event tickets from inside the attraction without returning to the gate.

Some companies in the attraction and entertainment industries anticipate that by 2013, up to half of the traffic to their websites will be from mobile devices. "Gateway is excited to be able to respond to customer demand for a mobile phone ticketing module that functions as a fully integrated sales channel with their existing Galaxy system," said Gateway Ticketing Systems Director of Sales and Marketing, Michael Furman.

For guests, the eGalaxy Mobile Web Store solution means no ticket lines, a more convenient purchasing option and no lost tickets—if a guest has their phone, they have their tickets. For the attractions industry, the mobile web store means less ticket stock and smoother operations. Gateway Product Solutions Manager, Marcus Lopez, added, "We've made the eGalaxy Mobile web Store as convenient as possible by making this a web application. That means there's no app to download to your phone. Our solution will work on the iPhone, Android devices, Blackberry phones — really, any device with a Web browser and an internet connection. We wanted to make sure our customers could reach the widest audience possible."

ASTM launches Supplier's Declaration of Conformity

W. CONSHOHOCKEN, Pa. — Responding to increasing requests from suppliers and their customers, ASTM International has developed a new program, Supplier's Declaration of Conformity. Launched in April 2012, this latest offering is an outgrowth of ASTM's certification programs.

Supplier's Declaration of Conformity provides manufacturers, purchasers and consumers with a useful and needed tool. A major benefit to suppliers will be the evidence that they can offer

their customers regarding conforming to ASTM test methods. Product test results will be registered with ASTM, and supporting documentation will show the supplier's registration and acceptance by an independent third party.

Sponsored and administered by ASTM International, the new program is available to any supplier, manufacturer, distributor or private brand owner. In a typical scenario, suppliers having products tested to ASTM test methods will register specific information regarding

their products, accredited labs and the ASTM test methods. Once accepted by ASTM, the supplier can provide the documentation or request ASTM to provide documentation to their customers.

"Quality, safety and precision are the hallmarks of ASTM test methods. Documentation supporting conformance to ASTM test methods will reinforce a supplier's credibility as well as enhance regulatory, marketing and sales efforts," explains Ken Pearson, senior vice president, operations, at ASTM International.



AIMS  *Safety is our business*
INTERNATIONAL **AMUSEMENT INDUSTRY**
MANUFACTURERS AND SUPPLIERS INTERNATIONAL

AIMS SAFETY SEMINAR AND CERTIFICATION PROGRAM

JANUARY 13–18, 2013
ORLANDO, FLORIDA

DOUBLETREE BY HILTON ORLANDO AT SEAWORLD

► **Safety in the Classroom** **TIP #3** of 4

OPERATIONS

QUESTION:

How often should an operator review a ride manufacturer's manual and service bulletins?

ANSWER:

These documents should be reviewed each year prior to opening. Since service bulletins are often sent to the maintenance department, operators should contact their maintenance department, or the manufacturer, to be sure they have the latest bulletins that affect the operations of the ride.

REGISTRATION WILL START ON SUNDAY AFTERNOON, JANUARY 13, 2013
CLASSES WILL START ON MONDAY, JANUARY 14, 2013
AND RUN THROUGH FRIDAY, JANUARY 18, 2013
VISIT WWW.AIMSINTL.ORG FOR UPDATES

INFORMATION: CALL (714) 425-5747



WEB SITE: WWW.AIMSINTL.ORG

MARKETWATCH

RIDING THE MARKET



Company	Prices	Prices	52 Weeks	
	One Month Ago	05/17/12	High	Low
Cedar Fair L.P.	\$28.97	\$26.84	\$31.74	\$16.34
MGM Mirage	\$13.86	\$10.40	\$16.05	\$7.40
Six Flags Ent. Corp.	\$45.04	\$44.48	\$49.04	\$24.72
CBS Corp.	\$32.18	\$30.02	\$35.00	\$17.99
Walt Disney Co.	\$42.15	\$44.33	\$45.80	\$28.19
Apollo Global Mgt. LLC	\$13.51	\$10.76	\$18.49	\$8.85
Blackstone Group	\$14.79	\$11.54	\$17.78	\$10.51
Village Roadshow	\$3.25	\$3.15	\$4.15	\$2.41
NBC Universal	\$19.30	\$18.88	\$21.00	\$14.02

CURRENCY FUEL PRICES



Region (U.S.)	As of 05/14/12	Change from year ago
East Coast	\$4.054	-\$0.021
Midwest	\$3.969	-\$0.036
Gulf Coast	\$3.915	-\$0.081
Mountain	\$4.004	-\$0.130
West Coast	\$4.277	N/A
California	\$4.349	-\$0.022



TOP 7 MOST TRADED CURRENCIES

On 05/17/12 \$1 USD =

0.7858 EURO
0.6269 GBP (British Pound)
80.3449 JPY (Japanese Yen)
0.9438 CHF (Swiss Franc)
1.0076 AUD (Australian Dollar)
1.0092 CAD (Canadian Dollar)

Baynum Painting completes work on Goliath for Six Flags New England



Baynum Painting has been hard at work during the off-season getting Six Flags New England's new Goliath roller coaster ready for its 2012 launch (May 25). The Vekoma Giant Inverted Boomerang roller coaster (relocated from Six Flags Magic Mountain) reaches nearly 200 feet high on both of its towers, and has several inversions and loops along its 1,204 feet of track. Baynum Painting needed approximately three months to prep and apply the ride's glossy new paint job, using Sherwin Williams' Corothane in order to get the best possible finish during New England's cold, wet winter weather. Some of the work was accessible via boom-lift, but most of it required special rigging and good old fashioned climbing to reach. COURTESY BAYNUM PAINTING

PEOPLE WATCH

Jerry Richard named to finance post at ESE

Wayne McCary, president and CEO of Eastern States Exposition (ESE) announces the appointment of **Jerry Richard** to the position of director of finance at the West Springfield, Mass., facility.

Richard joined ESE as finance assistant in 2002 and was promoted to controller in 2011. He assumed the director of finance position March 28, 2012.

He is responsible for the financial management, accounting procedures and operating budget for ESE as well as ticket inventory, management of online concert ticket sales, the box office, print shop and telephone systems. During the fair, he will also oversee the admissions department, managing all gate ticket and photo ID operations.

ESE is home of The Big E, the eighth largest fair in North America, which takes place September 14-30, 2012, and 120 year-round shows and events, Storrowton Village and Storrowton Tavern.



Richard

Schlitterbahn's Chris Ozimek receives award

Schlitterbahn's own **Chris Ozimek** received the Excellence in Hospitality Award presented during the Kansas City Kansas Convention & Visitors Bureau annual Tourism Celebration on May 2.

The Excellence in Hospitality Award, given by the staff of the Kansas City Kansas Convention & Visitors Bureau, recognized Chris for his ongoing support and partnership with the KCK CVB as well as his continual involvement with the entire KC tourism region.



Ozimek

Tracy Sarris named to post at Alpha-Omega

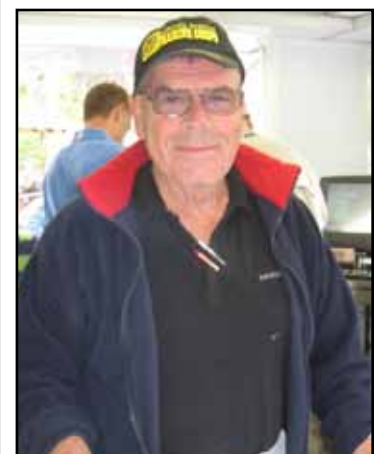
Frank Seninsky, president/CEO of Amusement Entertainment Management (AEM) and Alpha-Omega Amusements & Sales, announced that **Tracy Sarris**, director of marketing and communications for the Alpha-Omega Group of companies, was promoted to the position of chief marketing officer.

"Ms. Sarris will be responsible for the development of promotional strategies and plans for our respective companies," said Seninsky. "This will include generating and maintaining public interest in the company's services and products, while overseeing the day-to-day marketing operations."

THROUGH THE CAMERA LENS



Valerio Ferrari (Zamperla USE and CAI Amusements) was spotted recently at Coney Island taking time out of his day to help clean up the Coney Island boardwalk from graffiti one brush stroke at a time. Congratulations to Valerio for rolling up his sleeves (yes, his sleeves are rolled up) to help clean up the area he has helped bring life and fun back too. COURTESY ZAMPERLA



Knoebels Amusement Resort kicked off its 2012 season on April 28 with a party. The opening day also happened to be Dick Knoebel's 73 birthday. So how did Dick celebrate? By selling hand-stamps! We were told that Dick did manage to enjoy the day and shared birthday cake with friends. AT/B. DEREK SHAW

LED COLOR CHANGING RIDE PACKAGES

NEW! SMD LIGHTS

UNIFORM APPAREL • WICKING SHIRTS • LED LIGHTING • FLAGS&POLES

CHESTNUT
Chestnut Identity Apparel, Inc.

AMUSEMENT LINE

www.amusementline.com
800-336-8977

HEADWEAR • BALLS • PRIZES • APRONS



MIDWAY

CARNIVALS

STATE FAIRS

REVENUE

SUPPLIERS

Reporter's Notebook

Georgia State Fair draws 40,000

MACON, Ga. — The Georgia State Fair, Macon, drew 40,000 people during its 2012 run April 27-May 6, and even though that was up 5,000 from 2011, it missed the hoped for expectation by 10,000.

Mark Lovell, president and CEO of Universal Fairs, of Memphis, Tenn., the company that purchased the Georgia State Fair from the Macon Exchange Club last November, told local reporters he was grateful for the 40,000 that turned out. He feels it is just a stepping-stone to bring the fair back to what it used to be.

Marketing efforts were strong, Lovell said in a local news report, but high temperatures and competition from the air show at Robins Air Force Base worked against them.

Dixieland Carnival, based in Phenix City, Ala., provided the midway.

Quoted

"It tipped the wheel straight onto its side."

—Danny Ottaway, Ottaway Amusements, said on the damage caused to his show by a EF3 tornado that touched down in Wichita, Kansas on April 15

Showman's League plans big 2013 while getting word out in 2012

STORY: Pam Sherborne
psherborne@amusementtoday.com

CHICAGO, Ill. — Plans by Showmen's League of America members are already underway for the organization's centennial celebration in 2013.

"We have a lot going on right now with the Showmen's League," said Joe Burum, executive secretary. "Sam Johnston, our president this year, is dedicated to getting the word out about the Showmen's League. He will be traveling to carnivals and getting them reacquainted.

"Our incoming president, Chris Atkins, and Sam are already looking at plans for next year and how we will celebrate the centennial year," Burum said. "And, here in Chicago, we have been in our new building for a little while now and things are going great. We have rented out some office space upstairs to Vince Pagone (managing director) of the Illinois Chapter of Variety International."

Variety the Children's Charity is an international organization dedicated to promoting and protecting the health and well being of children around the world. The organization often hires carnival for fundraising events.

Plus, Burum said a Green Line (Chicago's public transportation) train station is set to open in the near future close to the SLA offices at 1023 W. Fulton Market. That will make access to the club much easier for members.

Johnston, a long-time industry veteran, founded Midways of Fun that he owned until 2002, selling much of his equipment then to Harry Mason, who has retained the name Midways of Fun. He now owns Funderland Park, Sacramento, Calif., a kiddie amusement park with about nine rides, said he already has visited some carnivals in the 2012 season and is putting together a route for the remainder of the season. He has been surprised at the lack of knowledge he has seen among



Sam Johnston,
current SLA president



Joe Burum,
SLA executive secretary



Chris Atkins and wife Kristen will have a busy 2013. Not only will Chris Atkins be at the helm of the Showmen's League of America for that organization's centennial year, but the two will also have a young son. Kristen Atkins is expected to deliver the couple's first child this summer. Chris Atkins travels with both Thomas Carnival, his family's show business, as well with Luehrs' Ideal Rides, his wife's family show business. COURTESY CHRIS ATKINS

those of the carnival industry about the Showmen's League.

"I have told them about our founder Buffalo Bill and I can talk two

hours about him alone," he said. "We have a lot of colorful characters in our background. Plus, some people are

▶ See SLA, page 42

Factory wholesale pricing! • Over 100 designs available! • Made in the USA



Toll Free: (800) 395-9980 • email: lisa@sippersbydesign.com • www.sippersbydesign.com

Indiana State Fair announces key management changes

INDIANAPOLIS, Ind. — The Indiana State Fair Commission in Indianapolis announced last month management changes spurred by last summer's deadly stage rigging collapse, including the retirement of a longtime employee who was noted in a report about the accident.

The other moves include the hiring of a new chief operating officer and a new director of safety and security for the fairgrounds, according to an *Associated Press* news report in SouthBendTribune.com. The changes follow the commission members' vote in April to make management changes recommended by consultants who investigated the Aug. 13, 2011, disaster that killed seven people and injured

dozens more.

Those consultants found that the stage rigging that toppled onto a crowd awaiting a concert by the country duo Sugarland didn't meet industry safety standards and that the fair's emergency plan was inadequate and resulted in confusion about who was in charge.

Officials quietly announced the retirement of fairgrounds facilities manager Dave Hummel, who was noted in a report that criticized confusion among fair officials over their responsibilities. A news release said Hummel's retirement was "part of restructuring state fair staff."

McFarland said in the news report that she didn't

believe Hummel was forced out. But she also said all of the organizational changes came in response to the investigations of the accident.

Officials also announced last month that David Shaw was to have started work on May 21 as chief operating officer for the fairgrounds, overseeing day-to-day operations. Shaw told reporters his "job one" would be to "go to school" on consultants' reports that recommended ways to improve safety at the fair.

The 2012 Indiana State Fair will run Aug. 3-19. North American Midway Entertainment, based in Farmland, Ind., will provide the midway.

—Pam Sherborne

KMG debuts its first green ride to much success

NETHERLANDS — In April, Netherlands-based KMG delivered its first brand new ride, the XLR8, to Jarno Otten, who was debuting the ride at the Easter Fair in Drachten, Netherlands.

According to KMG's Peter Theunisz, sales manager, the ride arrived just the night before the opening day of the Easter event. But, because of its easy set-up system, the XLR8 was ready to go a few hours before the opening.

The XLR8 is the very first transportable amusement ride with a self-controlled "rechargeable" power system. This power system will help to meet the demand for power in order to achieve the expected acceleration.

During deceleration, the returned energy will be stored in built-in Super Caps (capacitors), so the XLR8 can use its own generated power time after time. This way the prototype can be connected to a 63 amp and will use 80 amps together with all LEDs instead of 400 amps.

Theunisz said this is "the world's first green ride."

The XLR8 was set up in Velp, near Nijmegen, from April 11-15. After that the ride played at the major Queen's Birthday Fair of



KMG's new XLR8 ride is being touted as a green ride thanks to its self-controlled rechargeable power system.
COURTESY KMG

Rotterdam from April 21-May 6.

It has been very well received among fairgoers and potential buyers, Theunisz said.

►SLA

Continued from page 41

confused about what we do. Some people think we are the OABA (Outdoor Amusement Business Association).

"We aren't the OABA," he said. "The OABA has a different function. We really are not an association. We are a fraternal organization. We are together for fun and enjoyment. We gave away \$34,000 in scholarships last year and we have an annual Christmas party for special needs children in the community."

Johnston said the SLA has put together a long-range planning committee. One thing that committee has been working on is updating the SLA's bylaws, which were put together many years ago.

"There is one part that says everyone will be notified by telegraph," Johnston said, with a chuckle. "Well, we would like to change that."

Johnson said he has more time this year to dedicate to league efforts since his daughter, Ashley Johnston Edds, and her husband, John Edds, are pretty much running his park now.

Chris Atkins is a fourth generation carnival industry veteran. His father, Tom Atkins, is currently the president and CEO of Thomas Carnivals Inc., Austin, Texas. His mother, Margaret, is the daughter of Bernard Thomas. Her sister, Carolyn Thomas Hanschen,



is married to Tom Hanschen. Both families operate the show.

Chris Atkins is married to Kristin Clair Atkins. Her parents are Jean Anne and Joe Clair, Luehr's Ideal Rides.

"And, we are expecting our first child in July," Chris Atkins said. "It is a boy."

Atkins said they were really in the middle of the planning stages for the centennial celebration next year. He didn't really want to release details until it has all been ironed out.

"We really are trying to get the word out about the SLA," Atkins said. "We want people to know what we are about. There are so many people now who don't know who we are or what we do. When you get into the fair boards, some of them have never heard of us. We want to change that. I am very excited."

Atkins said he has felt a part of the SLA for a very long time. He remembers when his dad was president in the late 1980s.

"I think I was in junior high school," he said. "I went to Vegas with him. It was very fun."

WE FINANCE EVERYTHING
but the SMILES ON THE MIDWAY

Prairie Financial Helping show folks grow their businesses since 2000

Paul Muller
paul@prairiefinancialinc.com

Wade Muller
wade@prairiefinancialinc.com

Mark Walker
mark@prairiefinancialinc.com

816-554-3863 prairiefinancialinc.com

A division of

Member FDIC

PBJ Happee Days seeing success with rethemed Gravitron

MARION, Ark. — So far, so good, is what Pam Casper, PBJ Happee Days Shows, based in Marion, Ark., related the middle part of May.

"Everything is going pretty good," she said. "Business is up so far. And, well, knock on wood, I don't want to jinx myself, but we have had really good weather. No tornadoes so far this year."

Casper said they have had several dates so far this year with their newly refurbished Wisdom Gravitron. The show purchased the ride used 12 years ago.

"We spent about \$80,000 getting it redone," she said. "We had it totally rethemed. It is like we have a brand new ride. And, people coming to our midway also think it is brand new."

Casper said they hired Denny's Electronics of Sarasota, Fla., to do the refurbishment and certainly haven't regretted it. They renamed the ride Area 51.

"It's beautiful," she said.

She said they have also purchased a brand new Wisdom Super Himalaya, but, at mid-May, had not taken delivery of it. The show had hoped for it sooner, but Casper said she felt they would get it by

the end of May.

"My husband (Tim Casper) is flying to Denver, Colo., next week and hopefully will be able to bring it home," she said.

Casper said her show is just "busting at the seams" right now, i.e., feeling growing pains. The show is expanding their season as well as expanding the territory where they are playing.

The carnival will probably not purchase another new ride for the 2012 season, but they are definitely looking to purchase a new corn dog trailer at the end of the season as well as looking at new kiddie rides.

"Albert Frieden at Darton is building a motorcycle jump ride for us," Casper said. "We may invest in other kiddie rides after the season. We are looking at kiddie rides that also will ride adults. We feel that is a good fit for us."

Pam Mabbitt Casper's sister, Jayne Mabbitt Peters, passed away in mid-April. She said it has been hard, but they are trying to move on. Their parents, John and Barbara Mabbitt, passed the show to their children Pam Mabbitt Casper, Jayne Mabbitt Peters, and Monte Mabbitt.

—Pam Sherborne

Sombrero world record set during Funtastic Traveling Shows event



A group of 1,008 people wearing sombreros at Waterfront Park in Portland, Ore., set a world record on May 12, 2012. The previous record for the largest gathering of people wearing sombreros, was about 500 people. Ron Burback who owns Funtastic Traveling Shows Carnival in Portland has a Special Events division that produces full events. They produce the three-day Cinco de Mayo Fiesta, the largest Hispanic event in Portland, over the Cinco de Mayo weekend.

COURTESY TRACY BURBACK - MUNOZ

200 FEET

Vertigo

**PARK MODELS
80-100-140-200
FEET**

ARM Rides

**1506 FERNWOOD RD.
WINTERSVILLE, OHIO 43953
WWW.AMRIDES.COM • 740-264-6599**

Ottaway Amusements hit by twister

STORY: Pam Sherborne
psherborne@amusementtoday.com

WICHITA, Kan. – Just three days after an EF3 tornado touched down in Wichita April 15, Danny Ottaway, Ottaway Amusements, had already trucked the pieces of his twisted Chance Century Wheel across town to the Chance Manufacturing Co.

The storm system that passed through Wichita that day brought with it dozens of tornados as it trekked eastward. The one that toppled his 65-foot wheel was reported to have been one mile wide with winds between 136-165 mph. It stayed on the ground about 20 minutes, long enough to go about 15 miles before lifting off the ground.

Ottaway Amusements, based in Wichita, had set up in a mall parking lot before heading out to other events scheduled in Oklahoma. The single

day date was only his second date of the 2012 season.

“We had closed the midway at 6:30 p.m., Saturday, because they were predicting the storms,” Ottaway said. “The storm hit at 10:30 or 11 that night. It tipped the wheel straight onto its side. It fell right into the middle of my (Wisdom) Go Gator kiddie roller coaster, totally demolishing that ride.”

Ottaway feels that the twister must have been off the ground at the time it crossed over his show, tipping the highest ride.

“I have two Hampton umbrella rides and it didn’t knock those over at all,” he said. “My (Eyerly) Rock-O-Plane ride is about half the height of the wheel and it didn’t bother that either.”

“I live in Wichita, too,” he said. “I also have my winter quarters here. I didn’t have any damage to my home, but I

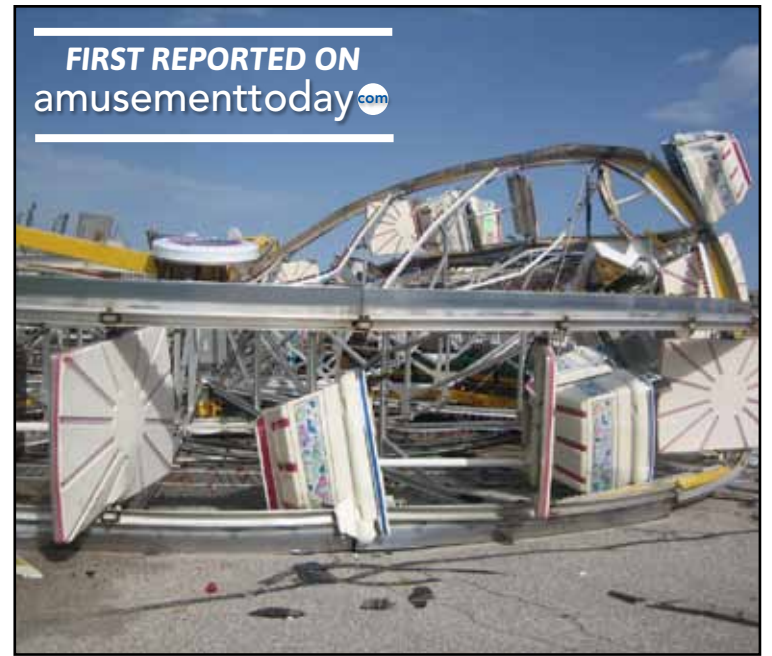
did have a games trailer blow over at the winter quarters.”

Ottaway and his staff spent the days following the tornado totally dismantling and taking the wheel apart. They then put it on flatbeds and trucked it to the Chance plant.

Speaking with Ottaway on April 17, he didn’t know what the estimate would be on fixing the ride. He feels probably 50 percent of it is salvageable.

“Unfortunately, I didn’t have any insurance on it,” Ottaway said. “I know people are going to read this and say, ‘My God, what was he thinking not to have any insurance on it.’ But, you know, it is just the chance you take. I bought that wheel about 20 years ago. At that time, it was going to cost me \$18,000 a year to insure that one ride.”

So, Ottaway said, he decided to self-insure his equip-



A EF3 twister in Wichita, Kansas on April mangled Ottaway Amusements Chance Century Wheel.
COURTESY OTTAWAY AMUSEMENTS

ment and his 17 rides. In other words, instead of paying the insurance company the premium, he put some money back for these times.

“Of course, I have all kinds of liability insurance coverage,” he said.

The ride cost him about \$450,000 20 years ago.

The Go Gator, which he purchased about 25 years ago, is gone. He paid between \$35,000 and \$40,000 for that ride.

“We are going to do alright,” he said. “If it had taken out my whole show, well, that would have been different. We are going to be fine.”

Florida federal court halts new H-2B rules

PENSACOLA, Fla. — A federal court judge in the Northern District of Florida Pensacola Division issued a preliminary injunction April 26 against new regulations the U.S. Department of Labor (DOL) wanted to implement to the H-2B temporary worker program.

The new rules, according to some outdoor amusement industry experts, will make the H-2B program almost unusable for them as well as others that rely heavily on the seasonal workers, such as the landscaping industry.

The rules actually were implemented by the DOL on April 23, but were not scheduled to become “operative” until April 27, according to Bob Johnson, OABA president.

Two lawsuits filed in the federal court in Pensacola against the new regulations by a group of interested parties resulted in the injunction. The sworn statement from CEO Sabeena Hickman of the Professional Landcare Network, PLANET, detailing the serious harm the DOL’s H-2B changes would cause to PLANET

FIRST REPORTED ON
amusementtoday.com

members was presented as testimony.

Although the injunction was granted in Florida’s federal court district, it applies nationwide.

Johnson sent out a statement that said: “The H-2B program is still under attack by the Administration and DOL. They have unlimited resources and will appeal this decision and will work to promote their big labor and union backed pseudo ‘worker’s rights’ group’s agenda. It is up to all of us, the H-2B stakeholder community, to project this essential program from this attack.”

OABA has joined with seven other associations in this litigation. Wayne Pierce, principal of the Pierce Law Firm and Blank Rome attorneys in Philadelphia, heads the legal team in this matter. Pierce filed his motion in the OABA’s case April 13.

—Pam Sherborne

“The #1 Leading Slide Manufacturer in America”
“World’s Largest 5 Lane, One Trailer Slide - 108 Ft.”

- Financing and Leasing Available
- Trades Considered
- Order Slide Bags or “New Rain” Bags
- 6 New Slides In Stock
- Have 20 Used Rides
- 90 Ft. Fiberglass Slide
- 65 Ft. Fiberglass Slide

FREDERIKSEN
INDUSTRIES, INC.
5212 St. Paul St.
Tampa, Florida 33619
(813) 628-4545
FAX (813) 621-3679
www.funslide.com





- 24 Seats
- Up to 48 Children
- Holds Adults Up to 200 lbs.
- Simultaneous Loading/Unloading
- Set-up Fast and Easy!
- Pull with Pickup

Another “family ride” also available...
Big Eli Construction Zone



1-800-274-0211 fax 217-479-0103
info@elibridge.com elibridge.com

MANY MAJOR MANUFACTURERS



Available Under One Roof!



REPRESENTING



S&S WORLDWIDE



LED LITES



RIDES 4U

221 Evans Way, Suite E Somerville, NJ 08876
Phone: (908) 526-8009 info@rides4u.com www.Rides4u.com

MIDWAY MARKET PLACE

WAPELLO is the One!
Built in the USA to Your Needs!



Let Wapello high-performance products go to work for you. Give us a call or write today. Custom sizes, shapes and colors.



Wapello Fabrications Company
 201 North Second Street • Wapello, IA 52653
 (319) 523-8371 • wafabco@louisacomm.net



Midway Stainless Fabricators

25 Montgomery St. Hillside, NJ 07205 USA PH 001-908-624-9660
www.midwaystainless.com mikecurci@midwaystainless.com



INDIANA TICKET COMPANY
 Design / Quality / Security

Manufacturers of Quality Tickets For over 70 years

1-800-428-8640

- Redemption Tickets
- Admission Tickets
- Direct Thermal Tickets
- Reserved Seating
- Wristbands
- Credentials



www.muncienovelty.com
info@muncienovelty.com

MUNCIE NOVELTY INC.
 COMPANY

W e've got your Ticket.



YOUR ONE SOURCE FOR ALL DIGITAL MESSAGE REPEATERS & COMMUNICATING EQUIPMENT NEEDS.



WATER PARK SAFETY - GO-KART PIT SAFETY - KIDDY RIDES
 FRONT GATE - COASTERS - GROUP GAMES
 SAFETY MESSAGE SYSTEMS OF ALL KINDS.
 ALL ARE WITCH TURN-KEY.

WE SERVE AMUSEMENT PARKS OF ALL KINDS.
 AIRPORTS, WATER PARKS, TRANSPORTATION COMPANIES.

VISIT OUR WEB SITE FOR MORE DETAILS AND VIDEO DEMOS
WWW.AUDIOINNOVATORS.COM

OFFICE 800.222.9929 - FAX 813.200.4600 - SALES@AUDIOINNOVATORS.COM



MIDWAYLIGHTS

COMPILED: Pam Sherborne, psherborne@amusementtoday.com

A bill that would establish a board to govern the troubled **Tennessee State Fair** in Nashville, passed unanimously in the State Senate last month.

Under the legislation, a board under the state's agriculture department would be established and be solely responsible for administering the fair and setting rules about its operation and management. The new board would be allowed to sell and lease property under management of the commission. The state House passed the same legislation one week earlier.

The Tennessee State Fair has been plagued with lower than hoped attendances over the last few years, with a couple of those years being totally deluged with rain. The current **Nashville Metropolitan Administration** has quit funding the fair and had wanted to redevelop the fair site, but that idea has not taken hold.

Several advocates that support keeping the fair in Nashville and at its current site at the **State Fairgrounds** said they were concerned the legislation would be the final step in moving the fair to another part of the state and allow the fairgrounds to be demolished.

In one of the largest productions ever mounted by the **Calgary (Alta.) Stampede**, organizers hope to tell the tale of how the **Greatest Outdoor Show on Earth** came to be — through the eyes of a horse.

In honor of the 100th anniversary, "Tails" will celebrate the fabled origins of the Stampede in a 45-minute spectacle that combines video, music, special effects and more than two dozen live horses.

The story will follow three horses from three distinct cultural enclaves of the old west — ranchers, First Nations Tribes and rodeo stars — tracking their path to the very first Calgary Stampede in 1912.

The show will be performed daily during the Stampede and entrance will be free with admission.

Fair dates this year are July 6-15.

The Grant County Fair and Rodeo, John Day, Ore., could be held two weeks earlier in August starting next year under a proposal going to the fair board.

Moving the fair to an earlier time in August would provide several benefits, according to fairgrounds manager Mary Weaver. Competitors who want to enter the **Oregon State Fair** would also be able to compete at the county fair, which has conflicted with the state dates.

The earlier date also would eliminate conflicts with fall sports and with teacher in-service sessions, allowing more participation at the fair.

Under the proposed schedule, which would not take effect until the 2013 fair, the fair would be held during the first full week of August.

This year's fair will remain as scheduled, during the third week of August. The dates are Aug. 22-25.

The dates for the 2012 Oregon State Fair, Salem, are Aug. 24-Sept. 3.

The San Diego County Fair, Del Mar, Calif., set for June 8-July 4, is looking for ways to reduce smoking.

The 22nd Agricultural Board, which oversees the fairgrounds hasn't enacted a complete ban. It's still legal to smoke, just not in the general public areas or where alcoholic beverages are served.

The board has reduced the number of smoking areas from seven to four, according to fair spokesperson Linda Zweig. The four smoking areas include the south side of Bing Crosby Hall, the east side of the Grandstand, the west side of the arena and at Surfside Race Place.

The smoking rules do not apply to the horse-racing season, which immediately follows the fair's 24-day run, according to local reports.

The fair's theme this year is "Out of this World."

New rides are coming to **Adventure Village** at the **Illinois State Fairgrounds**, Springfield, but only during the run of the state fair itself. Adventure Village has ceased being a non-fair season park. Officials said the park, which had been open from Memorial Day to Labor Day each, was no longer able to support itself.

North American Midway Entertainment, based in Farmland, Ind., which operates rides at Adventure Village, has been removing the old rides since January. North American Midway also provides the midway for the entire fair.

The old rides will be replaced by new rides still geared to children and families. However, the new rides will be there only during the run of the Illinois State Fair, Aug. 9-19.

Once the 2012 fair is over, the rides will be removed until next year.

The theme of this year's **Nebraska State Fair**, Grand Island, "High Flying Fun" was created to not only reflect the addition of the fair's new **Sky Tram** (sky ride) to be complete for the 2012 event, but it is also a reflection of what officials there want to portray... fun for the entire family.

Shaun Schleif, marketing and sponsorship director for the fair said, "The addition of the new Sky Tram was the impetus in selecting this year's theme. While it describes the 40-foot high Sky Tram, it also represents the fun the Nebraska State Fair provides for every member of the family."

The Sky Tram will traverse the distance of four football fields, from the Exhibition Building to the southern tip of the Cattle Barn. It will be a permanent installation, but will only operate during the 11 days of the State Fair. The rest of the year, the tram cables and chairs will be stored. The Sky Tram's more than 50 chairs will be outfitted with canopies.

In addition, the tram will be a separate ticketed attraction during the fair. Wade Shows, Livonia, Mich., has been selected to operate the tram this year. Wade Shows will take over the midway contract completely in 2013, will replacing Belle City Amusements, based in Deltona, Fla.

Fair dates for the 2012 fair are Aug. 24-Sept. 3.

Have Midway News or a state fair date of interest? Email it to **Pam Sherborne** at: psherborne@amusementtoday.com.

**Keep our carnival and fair industry strong!
 Buy products and services from these suppliers.**



MARKETPLACE

AmusementToday.com

AUCTIONS

EQUIPMENT

OPPORTUNITIES

SERVICES

AUCTION

**NORTON
AUCTIONEERS**

THE INDUSTRY EXPERTS!
Professional Auctioneers & Appraisers
*Carnivals • Parks • Carousels
FEC's • Museums • Tourist Attractions*

P.O. Box 279, Coldwater, MI 49036
517-279-9063
Fax: 517-279-4899
www.nortonauctioneers.com
E-mail: Dan@nortonauctioneers.com

FOR SALE

TOKEN MACHINES FOR SALE
Four Token Machines (26" tall, 13.5" wide, and 13" deep)
Manufacturer: Standard Change-Makers
2 - Model 200
2 - Model 400
Front display has yellow background with pink, purple and teal print with stars. Sides and back are black.
Text reads: Midway Tokens - Insert Cash Here - Tokens Dispensed Here
Bill acceptor takes \$1, \$5, \$10 & \$20 bills. Tokens dispense along bottom (7.5" opening) Lock on front left. Three-prong plug comes out of backside.
Price for all four: \$6,776
Please call (603) 474-5424

2008 CAPCO CENTER TRAILER

Like-new condition, 18'x8', removable hitch, all hydraulic, goes to ground level, extra awning lights.
\$40,300

Call EJ Dean (978) 375-2542

GENERATOR FOR SALE

Detroit deisel 140kw mounted in a sound proof enclosure
400 amp 3 phase main breaker, completely rebuilt in 1994 and only used 1300 hours since.
500 gal fuel capacity

For more details and pictures call Dennis at (718) 372-2592

OPPORTUNITY

SMOKEY MOUNTAIN AMUSEMENTS INC. Needs Ride Help In All Departments:
Ride Superintendent - For Green Unit.
Electrician - For Green Unit.
Contact:
Brian (Beaver) Bitner (919) 272-5627
Billy Clark (863) 738-1689
Winter Quarters Now Open! (843) 362-0022

RIDE MAINTENANCE SUPERVISOR at a Virginia Beach Amusement Park
Immediate position available
Full time or seasonal
Must have experience in all aspects of mechanical and electrical maintenance and upkeep.

Fax resume to (302) 644-9456 or e-mail us at info@atlanticfunpark.com

WANTED: EXPERIENCED AMUSEMENT RIDE MECHANIC
Successful candidates must be experienced in all aspects of Amusement Park maintenance programs. Candidates must have the ability to read maintenance manuals, maintain, erect, repair, and troubleshoot ride and park equipment.

Please respond with qualifications, resume, contact information, and salary requirements to:
Human Resources Department
Santa's Village AZoosment Park
601 Dundee Ave.
East Dundee, IL 60118
Email: don@azoosmentpark.com



MECHANIC

Company: Quassy Amusement Park
www.quassy.com

Quassy Amusement Park, Middlebury, Conn., has a full-time mechanic's position available. Applicant must have a thorough knowledge of and experience with mechanics, gear reduction, pneumatics, hydraulics, and electro-mechanical. Must have the proven ability to use these skills to ensure the safe operation, maintenance, and inspections of amusement rides, attractions and company equipment.

Competitive salary, benefits package. Complete job description available via e-mail at eanderson@quassy.com. Contact Eric Anderson, (203) 758-2913 x100. Quassy is an EOE.

OPPORTUNITY

Due to growth at the four North Texas Hawaiian Falls waterparks and the addition of a new park in Waco, Hawaiian Falls Waterparks is seeking senior managers. The following positions are currently open:

- General Manager
- Director of Finance
- Director of Marketing

Email cover letter and resumé to jobs@hfalls.com. More info and job descriptions are online at <http://www.hfalls.com/waterpark/employment.html>




Subscribe to our YouTube channel youtube.com/amusementtoday



Follow us on Twitter twitter.com/amusementtoday

FOR SALE



Bumper Cars (24 cars) 40x80 (SBF) ...	\$125,000
Twister/Maverick (Moser)	\$599,000
Drop Tower T/M (ARM)	\$249,000
Super Truck (SBF)	\$19,900
Ali Baba T/M (ARM)	\$249,000
Scooter 1800 T/M (Majestic)	\$224,000
Crazy Bus T/M (Zamperla)	\$99,000
Tornado T/M (Wisdom)	\$99,000
Drop Tower (Moser)	\$89,000
Americana Carousel 28' (Chance)	\$119,000
Traffic Jam T/M (SBF)	\$219,000
1989 Orbiter T/M	\$205,000
Sea Ray T/M (Mulligan)	\$249,000
Bear Affair	\$44,000
Baja Buggy T/M (Zamperla)	\$59,000
High Flyer (ARM)	\$189,000
Deluxe Sizzler T/M (Wisdom)	\$99,000
Crazy Surf P/M 60ft. tall 18 people (Sarton)	\$99,000

Call Len or John
(908) 526-8009
FAX: (908) 526-4535

FOR SALE



LOOPING COASTER

Launch Loop Shuttle Coaster
Arrow Dynamics all steel with G-Force 4, 56' high x 635' long
Built in 1977, excellent condition in Indiana. \$140,000
For photos and details:
ralph@vestil.com
22 Other Rides

KIDDIE RIDES FOR SALE
Turtles: \$7,500
Pony Carts: \$5,000
Tubs of Fun: \$6,000
Hampton Cars: \$8,000
Space Train: \$4,000
Little Dipper Coaster: \$7,000

ADULT
Paratrooper: \$24,000
Troika: \$65,000
Calypso: \$22,000
Flying Scooter: \$28,000
Majestic Bumper Cars: \$8,000

ralph@vestil.com
Angola, Indiana

FOR SALE
Wisdom Sizzler - \$125,000
SBF 4x4 Truck Ride - \$27,500
Bobs Space Racers 10-player Water Race Game - Park Model - \$9,995
Hampton 14-player Water Race Game Park Model - Make Offer
Bobs Space Racers 8-player Tin Can Alley Game - Make Offer

Martin's Fantasy Island
(716) 773-7591 x3106

OPPORTUNITY



**Industrial Mechanic
(Mechanical/Electrical)**

Morey's Piers is recruiting experienced Industrial Mechanics to join our Attractions Maintenance Team.

Morey's Piers, the region's leading Family Recreation destination, is seeking individuals to assist with ensuring the safe reliable operation of rides and mechanical equipment. This fast paced environment provides the opportunity to troubleshoot hydraulics and PLCs, demonstrate knowledge of electrical and mechanical troubleshooting, help to eliminate the down time of rides, work on special projects and preventative maintenance programs while maintaining a safety culture within a team environment. Competitive hourly pay rate and comprehensive benefits package offered.

Clear understanding of industrial maintenance safety, moderate experience with computers (CMMS experience a plus), ability to read and interpret blueprints and schematics as well as communicate and follow directions both written and verbally in English required. Technical training and experience is a must. Individual must be able to work flexible hours, including some weekends and evenings.

Candidates must be able to lift up to 70lbs; walk/stand for up to 8 hours; perform physical activities that require moving one's whole body in varying weather. Two year technical degree or equivalent experience in industrial maintenance or the military required. Pre-employment drug testing and background check required.
Full time, year round, benefitted position.

Please e-mail your cover letter and resume by June 30, 2012 to: jobs@moreyspiers.com.

DATEBOOK

- JUNE 2**
Give Kids The World Village, 24th Annual Black & White Gala, Peabody Hotel, Orlando, Fla.
- JUNE 5 & 6**
WWA Asian Symposium, Hong Kong SAR, China

facebook

Find us on Facebook
facebook.com/amusementtoday

YouTube

Subscribe to our YouTube channel
youtube.com/amusementtoday

ZAMPERLA®
is speed



DISK'O COASTER



MOTO COASTER



VOLARE

www.zamperla.com

AMSTERDAM

Antonio Zamperla Spa - Vicenza - Italy - Phone: +39 0444 998400 - e-mail: zamperla@zamperla.it